

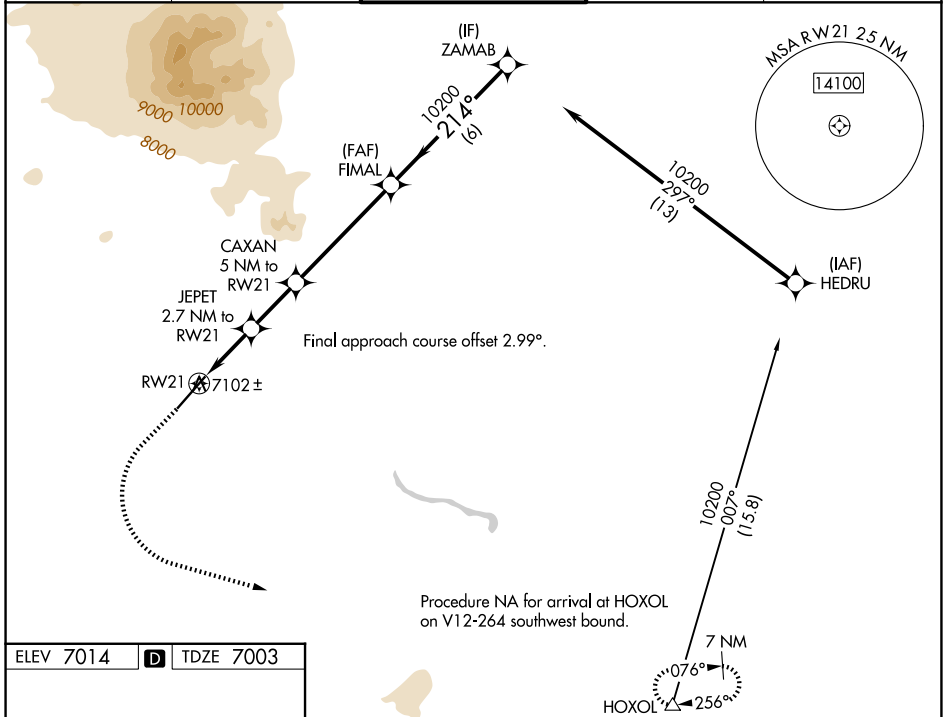
WAAS CH <b>99341</b> <b>W21A</b>	APP CRS <b>214°</b>	Rwy Ldg TDZE Apt Elev	<b>7000</b> <b>7003</b> <b>7014</b>
--	------------------------	-----------------------------	---

# RNAV (GPS) RWY 21

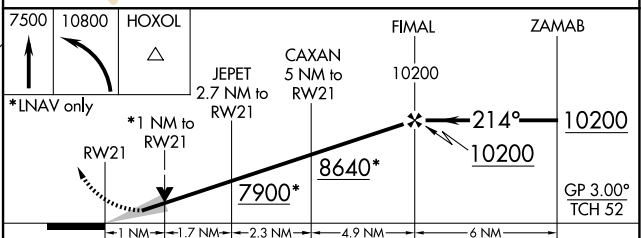
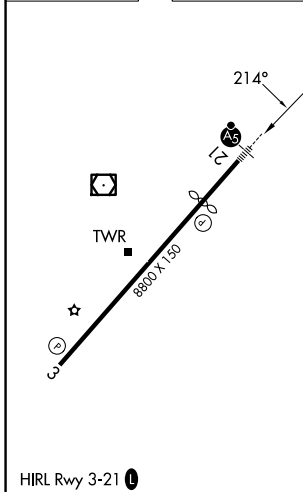
FLAGSTAFF PULLIAM (F.L.G)

<p><b>▼</b> For uncompensated Baro-VNAV systems, LNAV/VNAV NA below -19 °C (2°F) or above 44°C (111°F). DME/DME RNP-0.3 NA. <b>▲</b> For inop ALS, increase LPV all Cats visibility to 3/8 SM.</p>	<p>MALSR</p>	<p>MISSED APPROACH: Climb to 7500 then climbing left turn to 10800 direct HOXOL and hold.</p>
--	--------------	---

ATIS <b>125.8</b>	PHOENIX APP CON <b>126.375 236.775</b>	FLAGSTAFF TOWER ★ <b>134.55 (CTAF) 239.25</b>	GND CON <b>121.9</b>	UNICOM <b>122.95</b>
----------------------	---	--	-------------------------	-------------------------



ELEV 7014	<b>D</b>	TDZE 7003
-----------	----------	-----------



	A	B	C	D
CATEGORY	A	B	C	D
LPV DA	7258-1/2		255 (300-1/2)	
LNAV/VNAV DA	7319-5/8		316 (400-3/4)	
LNAV MDA	7360-1/2 357 (400-1/2)		7360-5/8 357 (400-3/4)	
CIRCLING	7520-1 506 (600-1)	7560-1 546 (600-1)	8100-3 1086 (1100-3)	8560-3 1546 (1600-3)

SW-4, 16 APR 2026 to 14 MAY 2026

SW-4, 16 APR 2026 to 14 MAY 2026