

| | | | |
|-------------------------|--------------------------------|-----------------------------|---|
| WAAS CH 77909 | APP CRS W27A 269° | Rwy Idg TDZE Apt Elev | 5503 387 387 |
|-------------------------|--------------------------------|-----------------------------|---|

RNAV (GPS) RWY 27

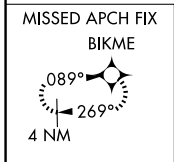
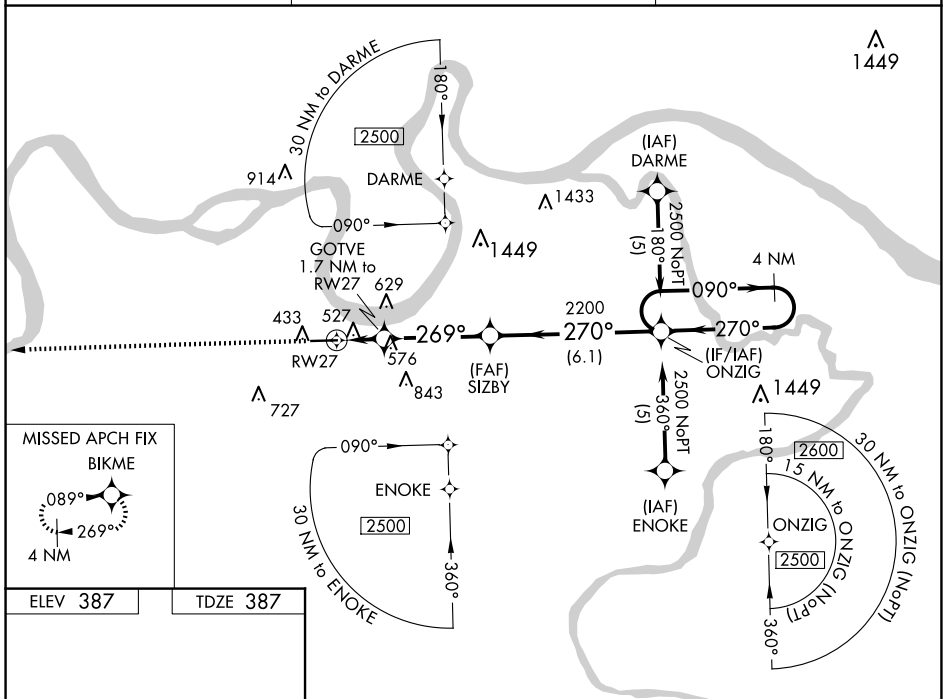
HENDERSON CITY-COUNTY (E.H.R.)

RNP APCH.

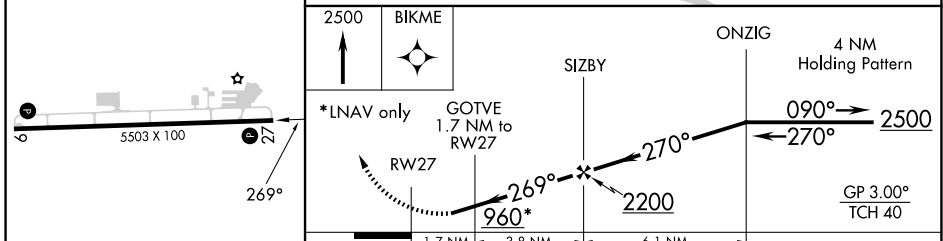
Baro-VNAV NA when using Evansville altimeter setting. For uncompensated Baro-VNAV systems, LNAV/VNAV NA below -15°C or above 48°C. Rwy 27 helicopter visibility reduction below ¾ SM NA. When local altimeter setting not received, use Evansville altimeter setting and increase all DA 41 feet and all MDA 60 feet and LPV all Cats, LNAV/VNAV all Cats and LNAV Cats C/D visibilities ¼ mile.

MISSED APPROACH: Climb to 2500 direct BIKME and hold.

| | | |
|---------------------------|--|--|
| AWOS-3PT 118.85 | EVANSVILLE APP CON ★ 124.025 257.8 | UNICOM 122.8 (CTAF) 0 |
|---------------------------|--|--|



| | |
|----------|----------|
| ELEV 387 | TDZE 387 |
|----------|----------|



| CATEGORY | A | B | C | D |
|--------------|-------|-------------|------------------------|------------------------|
| LPV DA | | 733-1¼ | 346 (400-1¼) | |
| LNAV/VNAV DA | | 827-1½ | 440 (500-1½) | |
| LNAV MDA | 840-1 | 453 (500-1) | 840-1⅜ 453 (500-1⅜) | 840-1½ 453 (500-1½) |

SE-1, 16 APR 2026 to 14 MAY 2026

SE-1, 16 APR 2026 to 14 MAY 2026