

TERPZ EIGHT DEPARTURE (RNAV)

FREDERICK, MARYLAND

POTOMAC DEP CON
 126.1 338.25
 ATIS
 124.875
 CLNC DEL
 127.425
 126.9 (When twr closed)
 GND CON
 127.425
 FREDERICK TOWER *
 132.4 (CTAF)
 UNICOM
 122.95

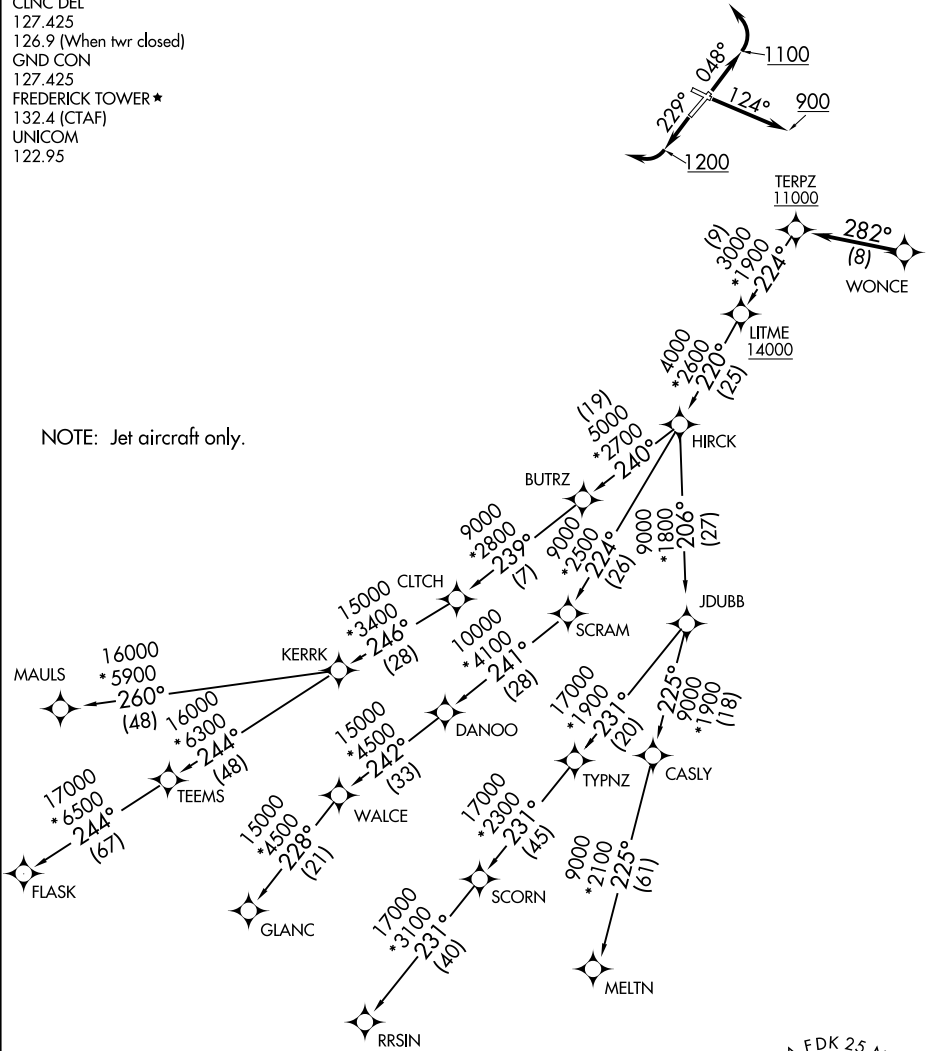
RNAV 1 - DME/DME/IRU or GPS.
 RADAR required.

**TOP ALTITUDE:
 17000**

NE-3, 16 APR 2026 to 14 MAY 2026

NE-3, 16 APR 2026 to 14 MAY 2026

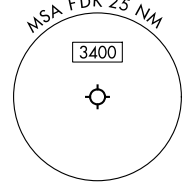
NOTE: Jet aircraft only.



TAKEOFF MINIMUMS:

- Rwy 5: 400-3 or Standard with minimum climb of 255'/NM to 600.
- Rwy 12: 500-2¾ or Standard with minimum climb of 410'/NM to 2400.
- Rwy 23: Standard.
- Rwy 30: Standard with minimum climb of 340'/NM to 2400.

NOTE: Chart not to scale.



TERPZ EIGHT DEPARTURE (RNAV)

(TERPZ8.TERPZ) 11JUL24

FREDERICK, MARYLAND
 FREDERICK MUNI (F'DK)