

25275

# AIRPORT DIAGRAM

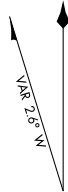
AL-5091 (FAA)

SOUTHERN ILLINOIS (MDH)  
CARBONDALE-MURPHYSBORO, ILLINOIS

ATIS  
119.725  
SOUTHERN TOWER\*  
125.35 322.4  
GND CON  
121.8



FIELD  
ELEV  
411

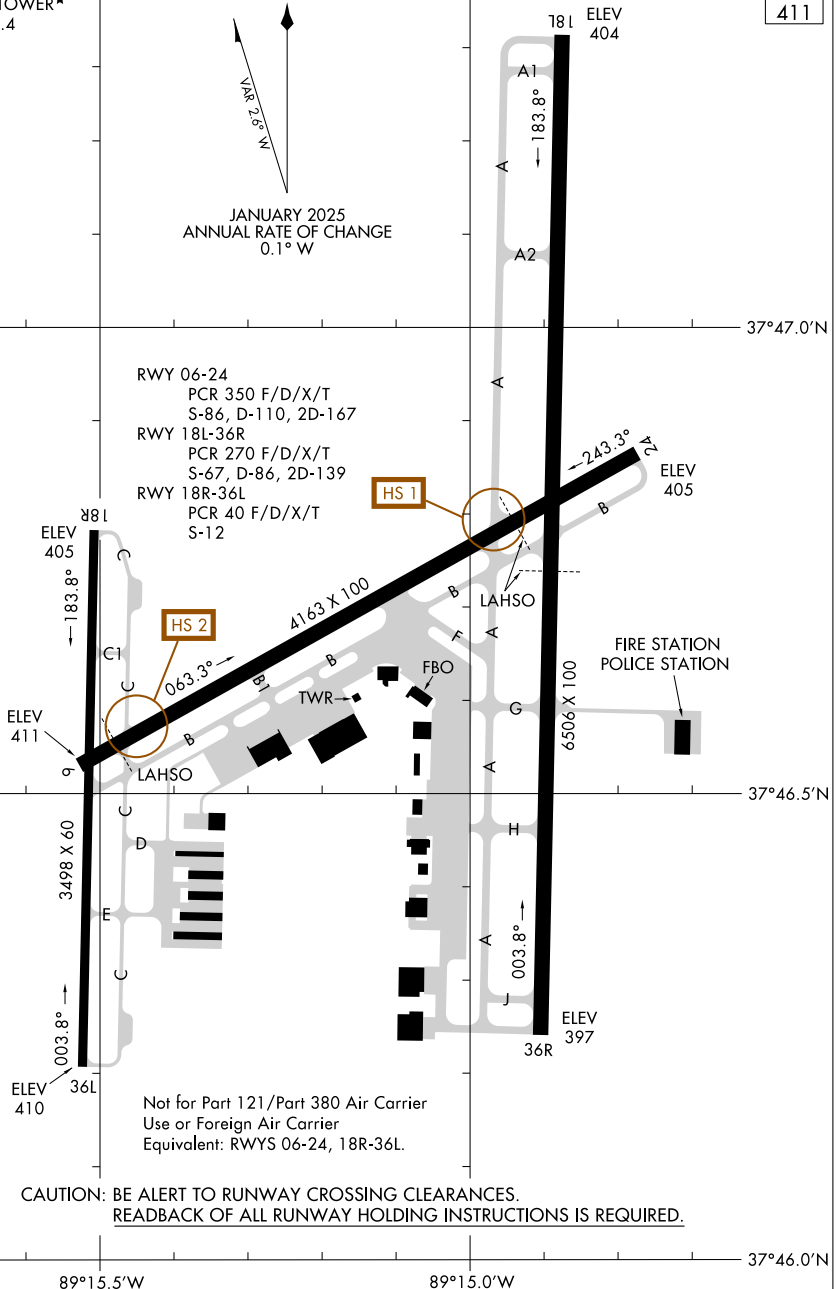


JANUARY 2025  
ANNUAL RATE OF CHANGE  
0.1° W

EC-3, 16 APR 2026 to 14 MAY 2026

EC-3, 16 APR 2026 to 14 MAY 2026

RWY 06-24  
PCR 350 F/D/X/T  
S-86, D-110, 2D-167  
RWY 18L-36R  
PCR 270 F/D/X/T  
S-67, D-86, 2D-139  
RWY 18R-36L  
PCR 40 F/D/X/T  
S-12



Not for Part 121/Part 380 Air Carrier  
Use or Foreign Air Carrier  
Equivalent: RWYS 06-24, 18R-36L.

CAUTION: BE ALERT TO RUNWAY CROSSING CLEARANCES.  
READBACK OF ALL RUNWAY HOLDING INSTRUCTIONS IS REQUIRED.

# AIRPORT DIAGRAM

25275

CARBONDALE-MURPHYSBORO, ILLINOIS  
SOUTHERN ILLINOIS (MDH)