

APP CRS	Rwy Ldg	6506
182°	TDZE	407
	Apt Elev	411

RNAV (GPS) RWY 18L

SOUTHERN ILLINOIS (MDH)

RNP APCH.

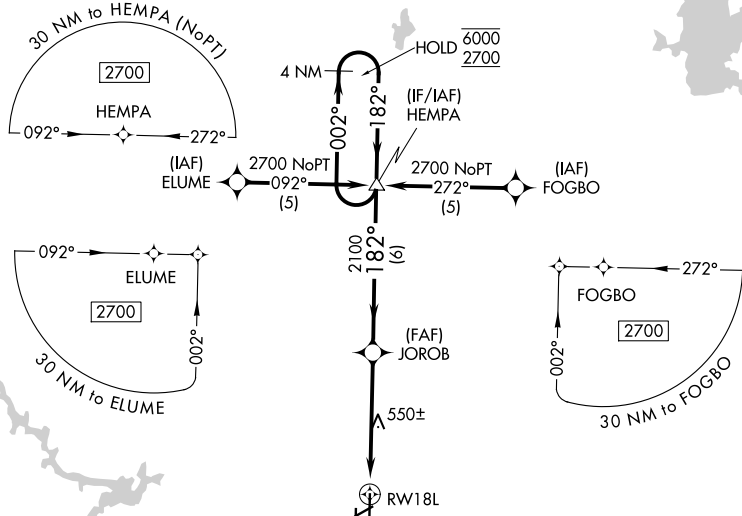
▼ Circling Rwy 6, 36L NA at night.
▲ For uncompensated Baro-VNAV systems,
 LNAV/VNAV NA below -15°C or above 54°C.

MALSR



MISSED APPROACH:
 Climb to 2700 direct
 SOPAW and hold.

ATIS 119.725	KANSAS CITY CENTER 127.475 346.275	SOUTHERN TOWER * 125.35 (CTAF) 0 322.4	GND CON 121.8	UNICOM 122.95
------------------------	--	--	-------------------------	-------------------------



EC-3, 16 APR 2026 to 14 MAY 2026

EC-3, 16 APR 2026 to 14 MAY 2026

