

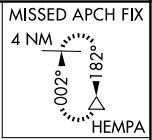
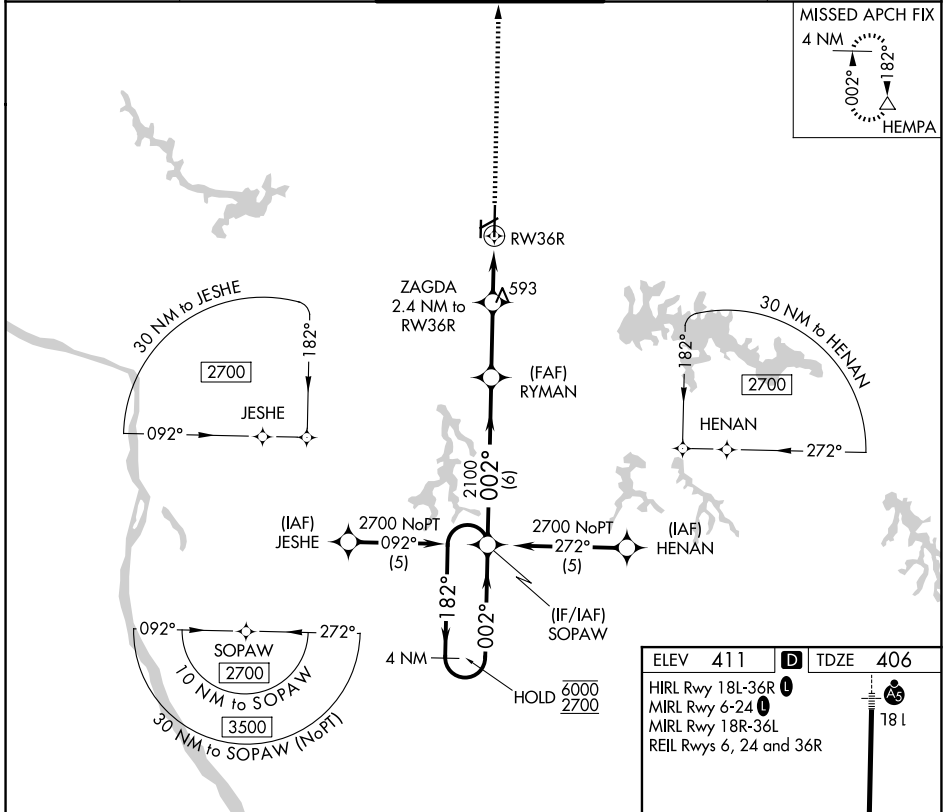
APP CRS	Rwy Ldg	6506
002°	TDZE	406
	Apt Elev	411

RNAV (GPS) RWY 36R

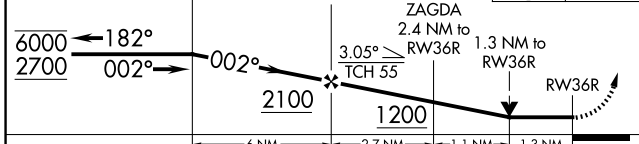
SOUTHERN ILLINOIS (MDH)

RNP APCH.		MISSED APPROACH: Climb to 2700 direct HEMPA and hold.		
<p>▼ Circling Rwy 6, 36L NA at night. ▲ Rwy 36R helicopter visibility reduction below 3/4 SM NA.</p>				

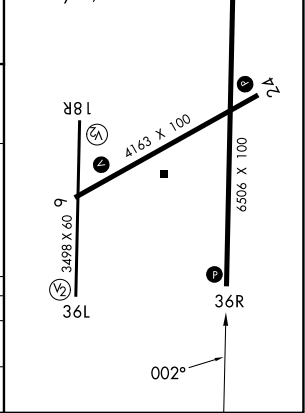
ATIS 119.725	KANSAS CITY CENTER 127.475 346.275	SOUTHERN TOWER ★ 125.35 (CTAF) 322.4	GND CON 121.8	UNICOM 122.95
------------------------	----------------------------------------------	------------------------------------------------	-------------------------	-------------------------



4 NM Holding Pattern	VGSI and descent angles not coincident (VGSI Angle 3.00/TCH 45).	2700 HEMPA
----------------------	------------------------------------------------------------------	------------



ELEV 411	TDZE 406
HIRL Rwy 18L-36R	MIRL Rwy 6-24
MIRL Rwy 18R-36L	REIL Rws 6, 24 and 36R



CATEGORY	A	B	C	D
LNVA MDA	860-1	454 (500-1)	860-1 3/8	454 (500-1 3/8)
CIRCLING	900-1 489 (500-1)	920-1 509 (600-1)	1180-2 1/4 769 (800-2 1/4)	1180-2 1/2 769 (800-2 1/2)

EC-3, 16 APR 2026 to 14 MAY 2026

EC-3, 16 APR 2026 to 14 MAY 2026