

FORT POLK, LOUISIANA

RNAV (GPS) RWY 16

WAAS CH 99069 W16A	APCH CRS 158°	Rwy Idg TDZE Arprt Elev 3914 328 330
--	-------------------------	--

[USA]

MAKS AAF (FORT POLK) (KPOE)

RNP APCH - GPS

RADAR required for arrivals at CATVO.

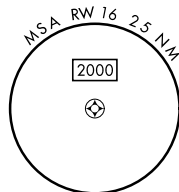
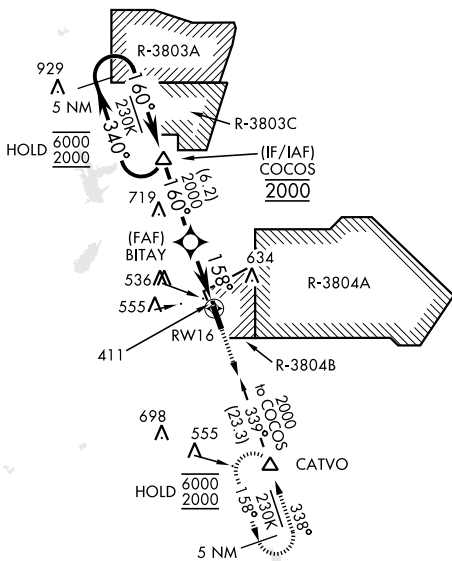
▼ For uncompensated Baro-VNAV systems, LNAV/VNAV not authorized below -15°C or above 54°C. When control tower is closed, increase vis to 1 mile.

MISSED APPROACH: Climb to 2000 direct CATVO and hold.

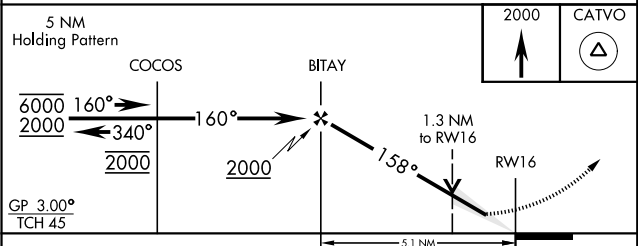
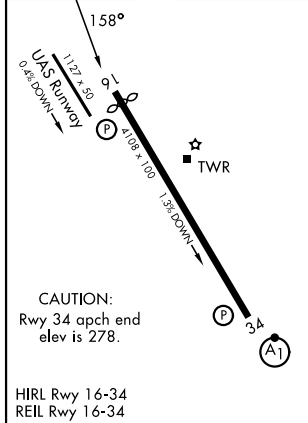
ATIS 134.85 282.2	APP CON 123.7 261.3	TOWER ★ 119.0 (CTAF) 257.75	GND CON 121.8 239.25	ASR/PAR
-----------------------------	-------------------------------	---------------------------------------	--------------------------------	---------

NoPT for arrival at COCOS on V212 eastbound.

When R-3803C is active, procedure entry from COCOS not authorized. Expect radar vectors to final.



ELEV	330	TDZE	328
------	-----	------	-----



CATEGORY	A	B	C	D
LPV DA	611-7/8	283		(300-7/8)
LNAV/VNAV DA	800-1 3/8	472		(500-1 3/8)
LNAV MDA	800-1	472 (500-1)	800-1 3/8	472 (500-1 3/8)
CIRCLING	880-1	550 (600-1)	880-1 1/2	940-2
			550 (600-1 1/2)	610 (700-2)

FORT POLK, LOUISIANA

31° 03'N-93° 11'W

MAKS AAF (FORT POLK) (KPOE)

Amdt 3 15MAY25

RNAV (GPS) RWY 16

SC-4, 16 APR 2026 to 14 MAY 2026

SC-4, 16 APR 2026 to 14 MAY 2026