

FORT POLK, LOUISIANA

RNAV (GPS) RWY 34

| | | |
|--|-------------------------|--|
| WAAS CH 88848 W34A | APCH CRS 338° | Rwy Idg TDZE Arprt Elev 4108 321 330 |
|--|-------------------------|--|

[USA]

MAKS AAF (FORT POLK) (KPOE)

RNP APCH - GPS

RADAR required for arrivals at CATVO.

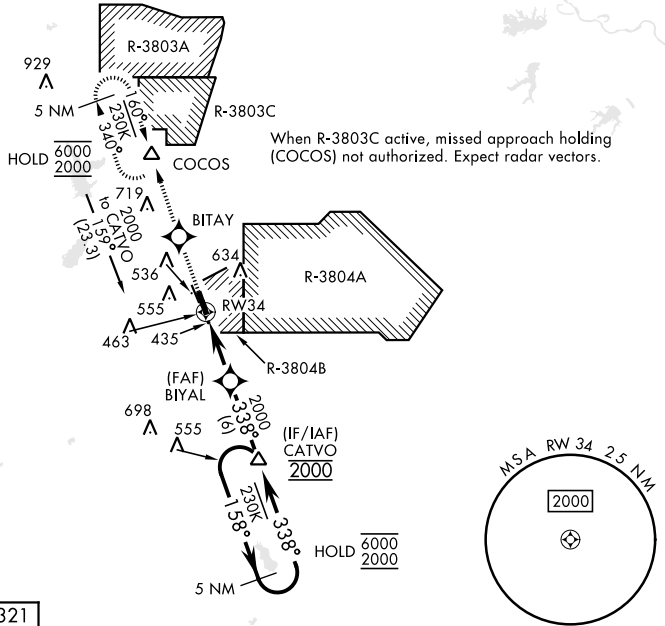
- ▼ * When ALS inop, increase vis to 1 mile.
- ** When ALS inop, increase vis to 7/8 mile.
- *** When ALS inop, increase CAT AB vis to 1 mile, CAT CD vis to 1 1/4 miles.
- When control tower is closed, increase vis to 1 mile.



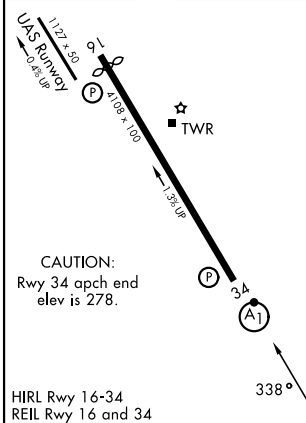
MISSED APPROACH: Climb to 2000 direct BITAY and on track 340° to COCOS and hold.

| | | | | |
|-----------------------------|-------------------------------|--------------------------------------|--------------------------------|---------|
| ATIS 134.85 282.2 | APP CON 123.7 261.3 | TOWER★ 119.0 (CTAF) 257.75 | GND CON 121.8 239.25 | ASR/PAR |
|-----------------------------|-------------------------------|--------------------------------------|--------------------------------|---------|

Rwy 34 helicopter visibility reduction below 3/4 mile not authorized.
 For uncompensated Baro-VNAV systems, LNAV/VNAV not authorized below -15°C or above 54°C.



| | |
|----------|----------|
| ELEV 330 | TDZE 321 |
|----------|----------|



| 2000 | BITAY | COCOS | 5 NM Holding Pattern | |
|----------------|---------------|---------------|----------------------|--------------------|
| BIYAL | | CATVO | | GP 3.00° TCH 45 |
| 1.4 NM to RW34 | | 5.3 NM | | |
| RW34 | 338° | 158° | 6000 | 2000 |
| | | 338° | 2000 | |
| CATEGORY | A | B | C | D |
| LPV DA * | 668-3/4 | | 347 | (400-3/4) |
| LNAV/VNAV DA** | 594-3/4 | 605-3/4 | 613-3/4 | 624-3/4 |
| | 273 (300-3/4) | 284 (300-3/4) | 292 (300-3/4) | 303 (300-3/4) |
| LNAV MDA*** | 760-3/4 | | 439 | (500-3/4) |
| CIRCLING | 880-1 | 550 (600-1) | 880-1 1/2 | 940-2 |
| | | | 550 (600-1 1/2) | 610 (700-2) |

FORT POLK, LOUISIANA
Amdt 3 15MAY25

31° 03' N-93° 11' W

MAKS AAF (FORT POLK) (KPOE)

RNAV (GPS) RWY 34

SC-4, 16 APR 2026 to 14 MAY 2026

SC-4, 16 APR 2026 to 14 MAY 2026