

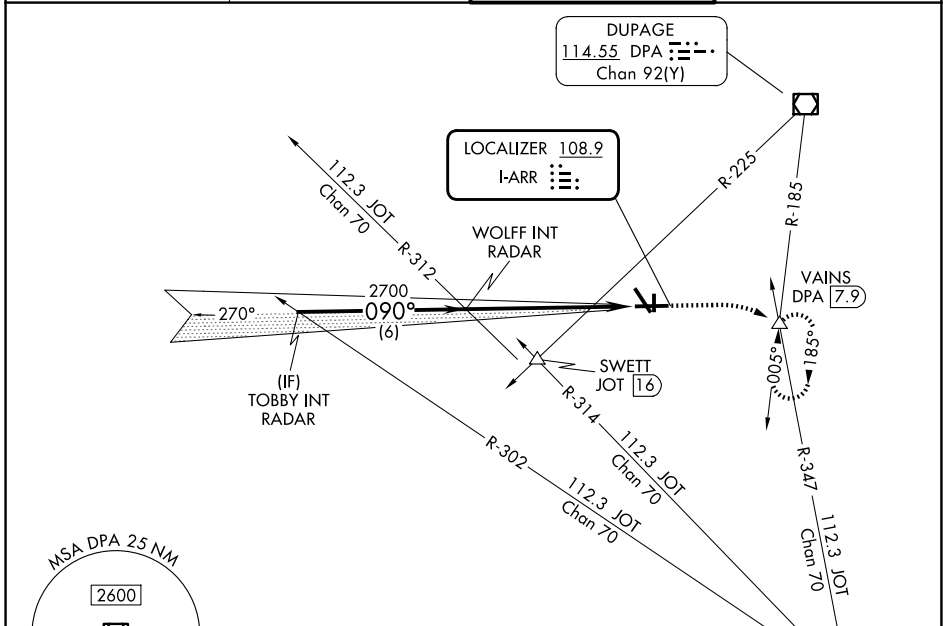
LOC I-ARR <b>108.9</b>	APP CRS <b>090°</b>	Rwy Ldg TDZE Apt Elev	<b>6501</b> <b>707</b> <b>712</b>
---------------------------	------------------------	-----------------------------	---

# ILS or LOC RWY 9

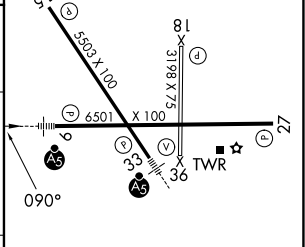
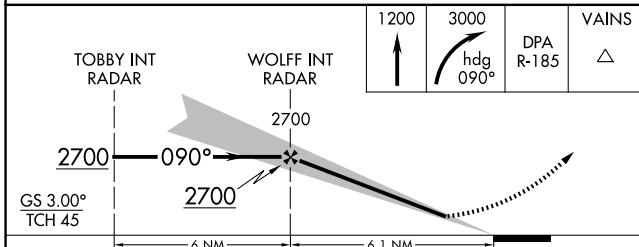
AURORA MUNI (A.R.R.)

RADAR required for procedure entry.		MALSRL	MISSED APPROACH: Climb to 1200 then climbing right turn to 3000 on heading 090° and on DPA VOR/DME R-185 to VAINS INT/DPA 7.9 DME and hold, continue climb-in-hold to 3000.
For inop ALS, increase S-LOC 9 Cat C/D visibilities to 1 3/8 SM.			

ATIS <b>125.85</b>	CHICAGO APP CON <b>133.5 349.0</b>	AURORA TOWER ★ <b>120.6 (CTAF)</b>	GND CON <b>121.7</b>
-----------------------	---------------------------------------	---------------------------------------	-------------------------



ELEV 712	<b>D</b>	TDZE 707
----------	----------	----------



CATEGORY	A	B	C	D
S-ILS 9	907-1/2 200 (200-1/2)			
S-LOC 9	1220-1/2 513 (600-1/2)	1220-1 513 (600-1)		
CIRCLING	1220-1 508 (600-1)	1300-1 588 (600-1 1/2)	1320-2 608 (700-2)	

MIRL Rwy 18-36	<b>(L)</b>
HIRL Rwy 15-33 and 9-27	<b>(L)</b>
REIL Rwy 15, 18, 27, and 36	<b>(L)</b>
FAF to MAP 6.1 NM	
Knots	60 90 120 150 180
Min:Sec	6:06 4:04 3:03 2:26 2:02