

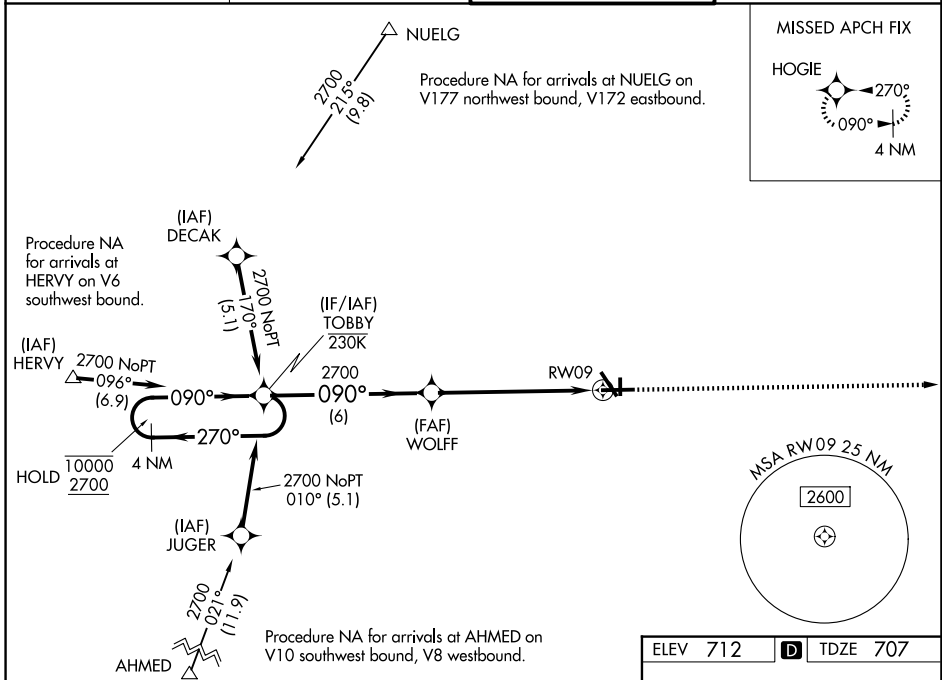
WAAS CH <b>45522</b> <b>W09A</b>	APP CRS <b>090°</b>	Rwy Ldg TDZE Apt Elev	<b>6501</b> <b>707</b> <b>712</b>
--	------------------------	-----------------------------	---

# RNAV (GPS) RWY 9

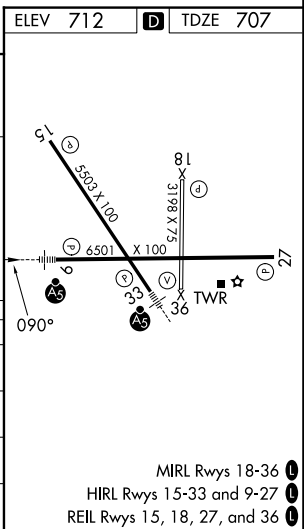
AURORA MUNI (A.R.R.)

RNP APCH - GPS.		MALSR	MISSED APPROACH: Climb to 2500 direct HOGIE and hold.
<p>▼ For uncompensated Baro-VNAV systems, LNAV/VNAV NA below -20°C or above 54°C. For inop ALS, increase LNAV Cat C/D visibility to 1½ SM.</p>			

ATIS <b>125.85</b>	CHICAGO APP CON <b>133.5 349.0</b>	AURORA TOWER ★ <b>120.6 (CTAF) 0</b>	GND CON <b>121.7</b>
-----------------------	---------------------------------------	---	-------------------------



4 NM Holding Pattern		TOBBY	WOLFF	2500 HOGIE
GP 3.00° TCH 45		*RNAV only.		
10000 2700		*1.5 NM to RW09		
6 NM		4.6 NM		1.5 NM
CATEGORY	A	B	C	D
LPV DA	957-½		250 (300-½)	
LNAV/VNAV DA	1035-½		328 (400-½)	
LNAV MDA	1220-½ 513 (600-½)		1220-1 513 (600-1)	
CIRCLING	1220-1 508 (600-1)		1300-1½ 588 (600-1½) 1320-2 608 (700-2)	



EC-3, 16 APR 2026 to 14 MAY 2026

EC-3, 16 APR 2026 to 14 MAY 2026