

WAAS CH <b>65817</b> <b>W33A</b>	APP CRS <b>334°</b>	Rwy Ldg <b>10702</b> TDZE <b>17</b> Apt Elev <b>17</b>
--	------------------------	--

# RNAV (GPS) RWY 33

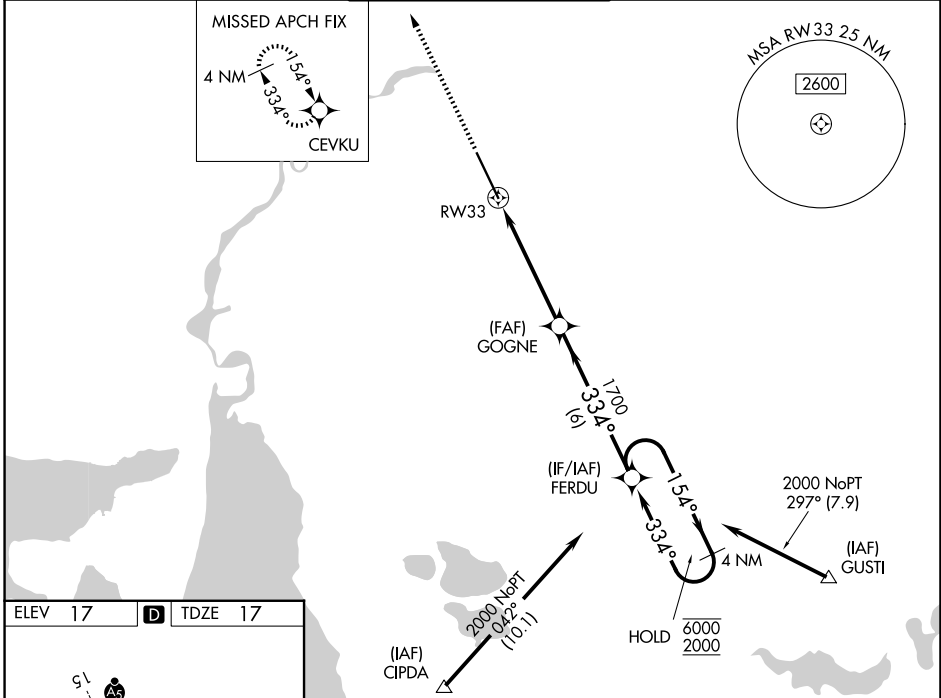
CHENNAULT INTL (CWF')

RNP APCH - GPS.

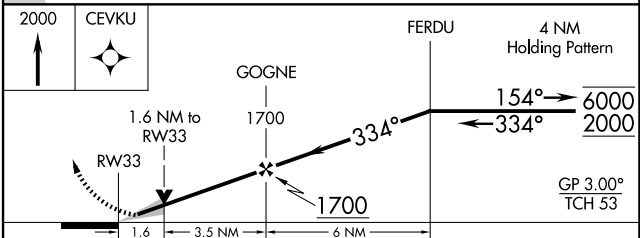
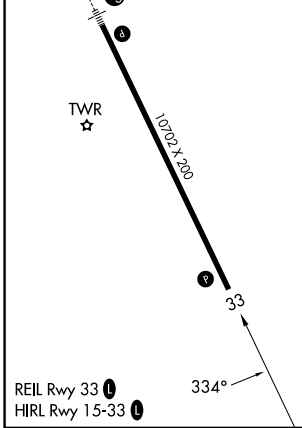
Baro-VNAV and VDP NA when using Lake Charles Rgnl altimeter setting.  
 For uncompensated Baro-VNAV systems, LNAV/VNAV NA below -15°C or above 54°C.  
 When local altimeter setting not received, use Lake Charles Rgnl altimeter setting and increase LPV DA to 233 feet; increase LNAV/VNAV DA to 510 feet and all visibilities 1/8 SM. Increase all MDAs 20 feet and LNAV visibility Cat C/D 1/8 SM.

MISSED APPROACH: Climb to 2000 direct CEVKU and hold.

ATIS <b>120.0</b>	LAKE CHARLES APP CON * <b>119.8 282.3</b>	CHENNAULT TOWER * <b>124.2 (CTAF) 0 290.4</b>	GND CON <b>121.65 275.8</b>	UNICOM <b>122.95</b>
----------------------	--	--	--------------------------------	-------------------------



ELEV 17	<b>D</b>	TDZE 17
---------	----------	---------



CATEGORY	A	B	C	D
LPV DA		217-3/4	200 (200-3/4)	
LNAV/VNAV DA		494-13/4	477 (500-13/4)	
LNAV MDA	580-1	563 (600-1)	580-15/8	563 (600-15/8)
CIRCLING	640-1	623 (700-1)	640-13/4	740-21/4 723 (800-21/4)