

VOR/DME ESC 113.55 Chan 82 (Y)	APP CRS 351°	Rwy Idg 5015 TDZE 600 Apt Elev 609
--	------------------------	---

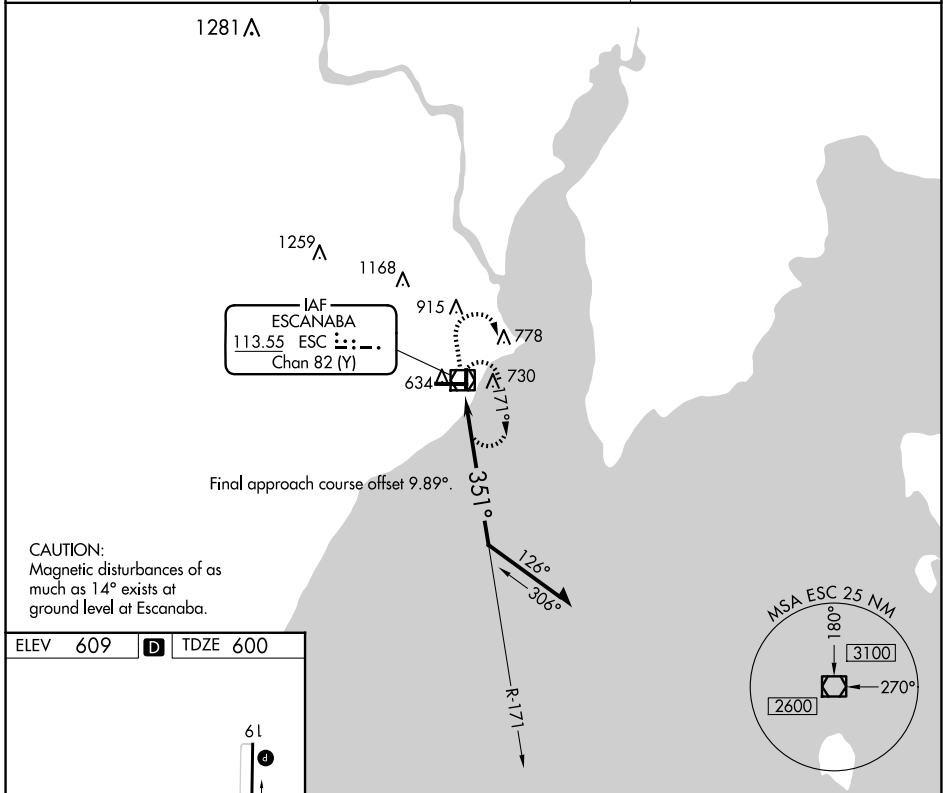
VOR RWY 1

DELTA COUNTY (ESC)

⚠ Rwy 1 helicopter visibility reduction below 3/4 SM NA.

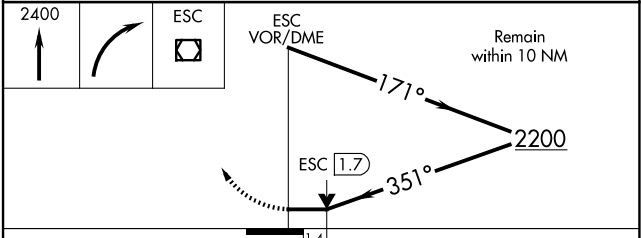
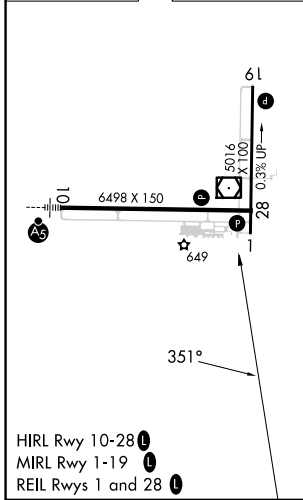
⚠ MISSED APPROACH: Climb to 2400 then right turn direct ESC VOR/DME and hold.

AWOS-3PT 121.425	MINNEAPOLIS CENTER 127.65	UNICOM 122.8 (CTAF)
----------------------------	-------------------------------------	-------------------------------



CAUTION:
Magnetic disturbances of as much as 14° exists at ground level at Escanaba.

ELEV 609	D	TDZE 600
----------	----------	----------



CATEGORY	A	B	C	D
S-1	1080-1 480 (500-1)		1080-1 3/8 480 (500-1 3/8)	
C CIRCLING	1080-1 471 (500-1)		1280-2 671 (700-2)	1480-2 3/4 871 (900-2 3/4)

EC-1, 16 APR 2026 to 14 MAY 2026

EC-1, 16 APR 2026 to 14 MAY 2026