

WAAS CH 65840 W32A	APP CRS 318°	Rwy Ldg 3034 TDZE 49 Apt Elev 49
----------------------------------------	------------------------	-------------------------------------------------------------

RNAV (GPS) RWY 32

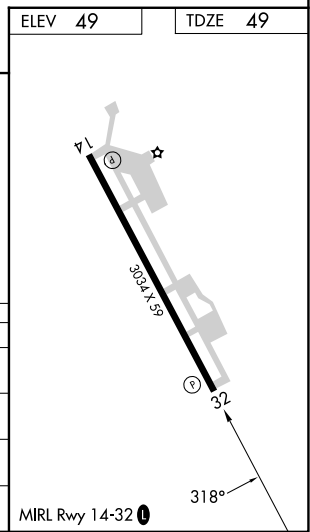
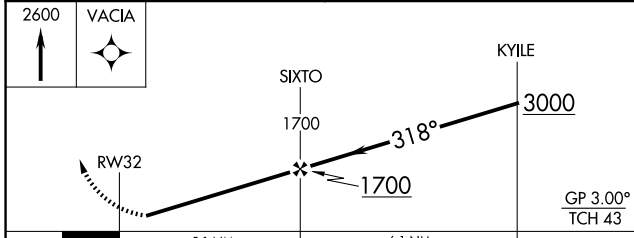
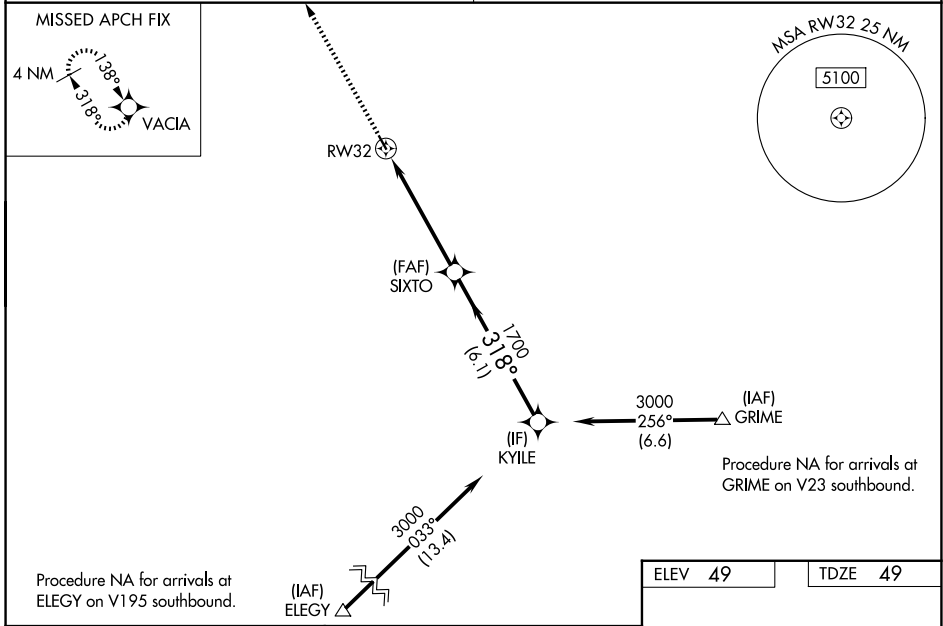
COLUSA COUNTY (008)

RNP APCH - GPS.

NA Baro-VNAV NA when using Sacramento Intl altimeter setting. Rwy 32 helicopter visibility reduction below 1 SM NA. For uncompensated Baro-VNAV systems, LNAV/VNAV NA below -15°C or above 54°C. Procedure NA at night. Obtain local altimeter setting on CTAF; when not received, use Sacramento Intl altimeter setting: increase LPV DA to 381 feet, increase LNAV/VNAV DA to 551 feet and all visibilities ¼ SM; increase all MDAs 100 feet and LNAV Cat C visibility ¼ SM and Circling Cat C visibility ½ SM.

MISSED APPROACH: Climb to 2600 direct VACIA and hold.

OAKLAND CENTER 132.2 350.3	UNICOM 122.8 (CTAF) 0
--------------------------------------	---------------------------------



CATEGORY	A	B	C	D
LPV DA	299-1	250 (300-1)		NA
LNAV/VNAV DA	469-1 1/8	420 (500-1 1/8)		NA
LNAV MDA	520-1	471 (500-1)	520-1 3/8 471 (500-1 3/8)	NA
CIRCLING	600-1	551 (600-1)	620-1 1/2 571 (600-1 1/2)	NA

SW-2, 16 APR 2026 to 14 MAY 2026

SW-2, 16 APR 2026 to 14 MAY 2026