

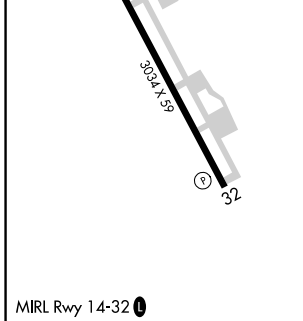
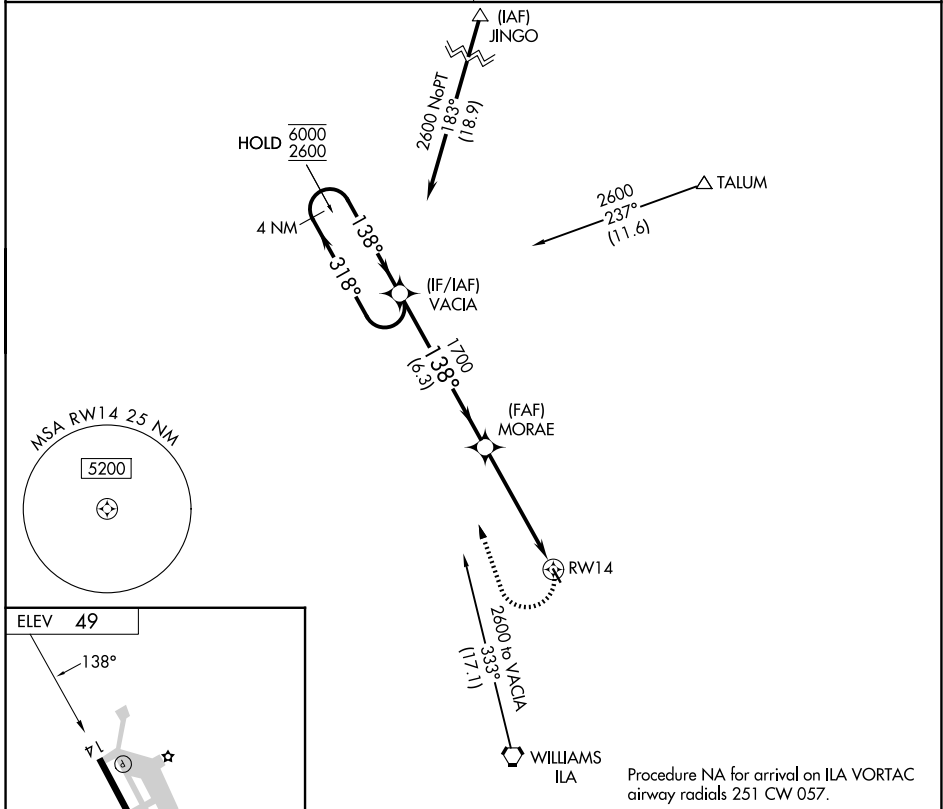
APP CRS	Rwy Ldg	N/A
138°	TDZE	N/A
	Apt Elev	49

RNAV (GPS)-B

COLUSA COUNTY (008)

RNP APCH - GPS.		MISSED APPROACH: Climbing right turn to 2600 direct VACIA and hold.
<p>⚠ NA Circling Rwy 32 NA at night. Rwy 14, 32 helicopter visibility reduction below 1 SM NA. Obtain local altimeter setting on CTAF; when not received, use Sacramento Intl altimeter setting and increase all MDAs 100 feet and Cat C visibility ½ SM.</p>		

OAKLAND CENTER 132.2 350.3	UNICOM 122.8 (CTAF) 0
--------------------------------------	---------------------------------



VGS1 and descent angles not coincident (VGS1 Angle 3.00/TCH 25).				2600	VACIA
4 NM Holding Pattern					
6000	← 318°	→ 138°			
2600					
			6.3 NM	5 NM	
CATEGORY	A	B	C	D	
CIRCLING	600-1	551 (600-1)	620-1½ 571 (600-1½)	NA	

SW-2, 16 APR 2026 to 14 MAY 2026

SW-2, 16 APR 2026 to 14 MAY 2026

MIRL Rwy 14-32 0