

VORTAC ILA 114.4 Chan 91	APP CRS 356°	Rwy Ldg TDZE Apt Elev	N/A N/A 49
--	------------------------	-----------------------------	---------------------------------------

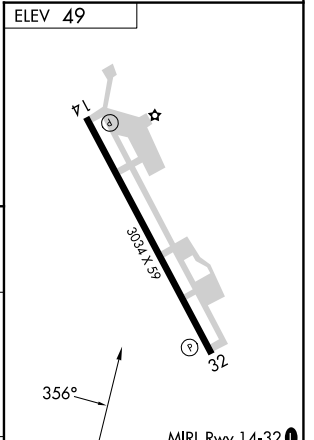
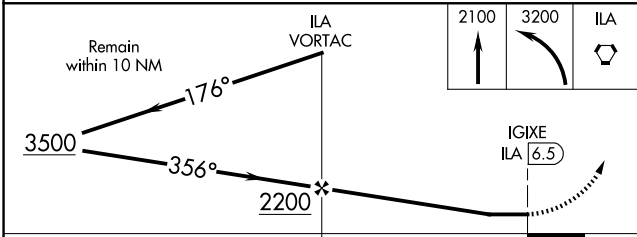
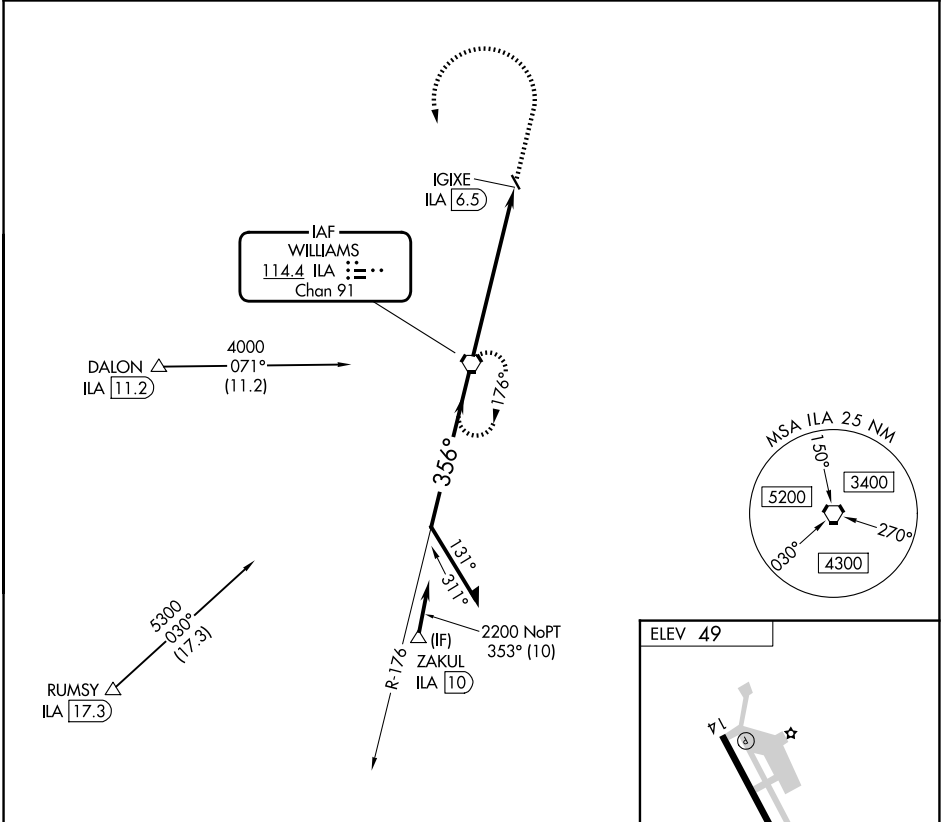
VOR-A
COLUSA COUNTY (008)

DME required.

⚠ NA Circling Rwy 32 NA at night. Obtain local altimeter setting on CTAF; when not received, use Sacramento Intl altimeter setting and increase all MDAs 100 feet and visibility Cat C ½ SM.

MISSED APPROACH: Climb to 2100 then climbing left turn to 3200 direct ILA VORTAC and hold.

OAKLAND CENTER 132.2 350.3	UNICOM 122.8 (CTAF) 0
--------------------------------------	---------------------------------



CATEGORY	A	B	C	D	FAF to MAP 6.5 NM					
CIRCLING	600-1	551 (600-1)	620-1½ 571 (600-1½)	NA	Knots	60	90	120	150	180
					Min:Sec	6:30	4:20	3:15	2:36	2:10