

RNAV (GPS) RWY 31

APCH CRS	Rwy ldg	9999
315°	TDZE	10
	Arprt Elev	10

[USAF]

CAPE CANAVERAL SFS SKID STRIP (KXMR)

DME/DME RNP-0.3 NA.

SALS

▼ * When ALS inop, increase CAT CDE vis to 1 3/8 miles.
 ** Circling not authorized NE of Rwy 13-31.

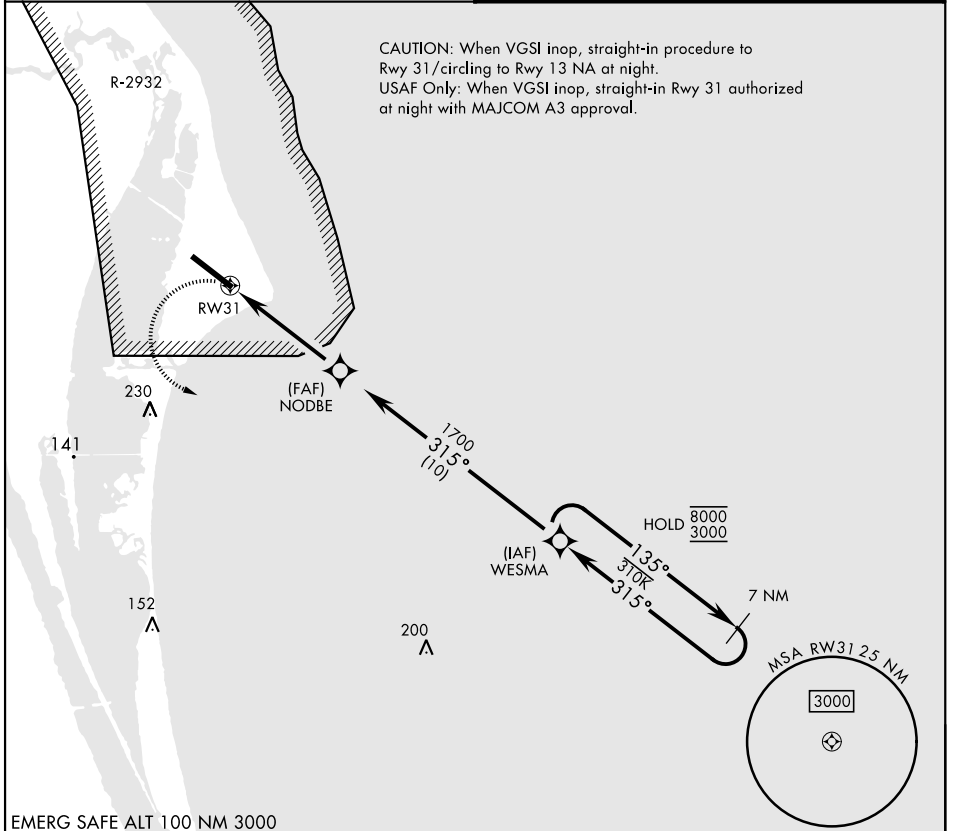


MISSED APPROACH: Turn left, climb to 3000 direct WESMA and hold.

ORLANDO APP CON
134.95 281.425

CAPE TOWER ★
118.625 143.15 239.05

CAUTION: When VGSI inop, straight-in procedure to Rwy 31/circling to Rwy 13 NA at night.
 USAF Only: When VGSI inop, straight-in RWY 31 authorized at night with MAJCOM A3 approval.



EMERG SAFE ALT 100 NM 3000

	WESMA	7 NM Holding Pattern	ELEV	10	TDZE	10
	NODBE	1700				
	RWY 31	3.04° TCH 79				
CATEGORY	A	B	C	D	E	
LNAV MDA *	500-1 491 (500-1)		500-1 1/8 491 (500-1 1/8)			
CIRCLING **	580-1 570 (600-1)		580-1 1/2 570 (600-1 1/2)	620-2 610 (700-2)	640-2 1/4 630 (700-2 1/4)	HIRL Rwy 13-31

RNAV (GPS) RWY 31

SE-3, 16 APR 2026 to 14 MAY 2026

SE-3, 16 APR 2026 to 14 MAY 2026