

# RNAV (GPS) RWY 18

ELY/YELLAND FLD (ELY)

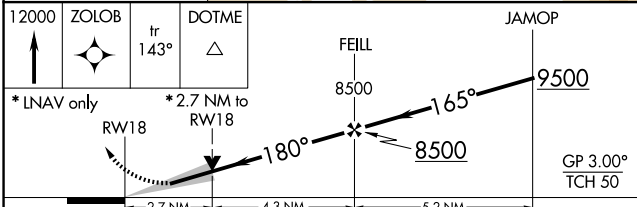
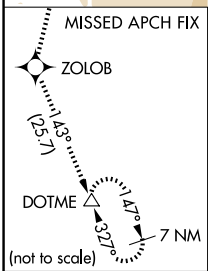
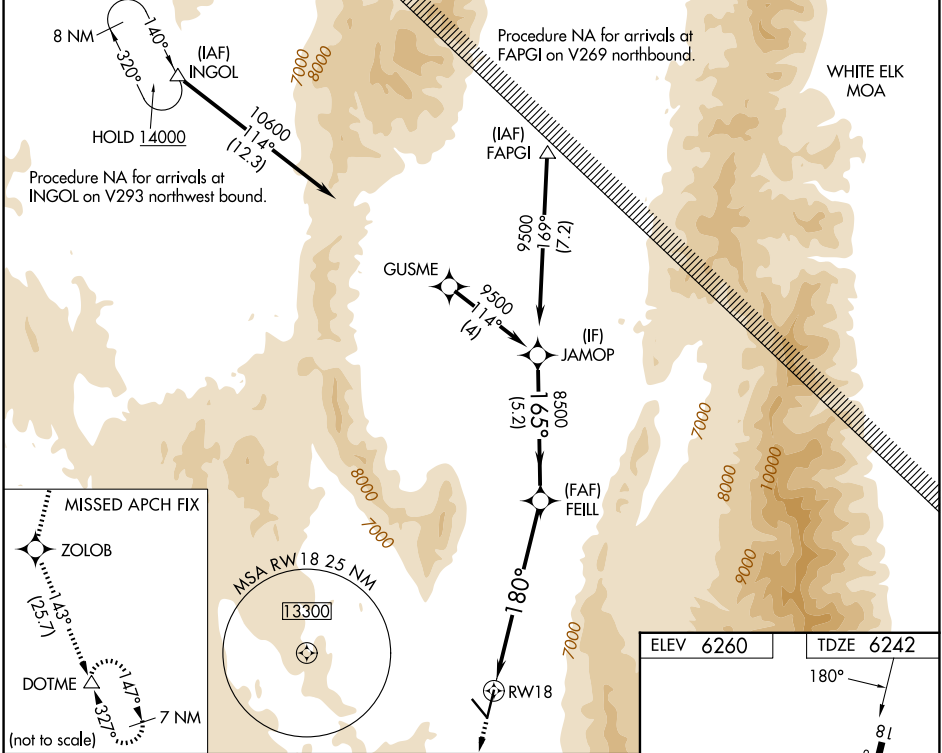
WAAS CH <b>42823</b> <b>W18A</b>	APP CRS <b>180°</b>	Rwy Ldg TDZE Apt Elev	<b>6017</b> <b>6242</b> <b>6260</b>
--	------------------------	-----------------------------	---

RNP APCH.

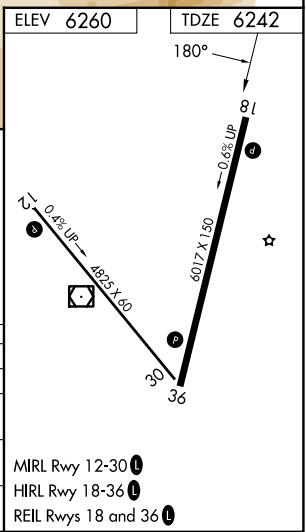
**Baro-VNAV NA.** Circling Rwy 30 NA at night. Circling NA for Cats A and B southwest of Rwy 12 and west of Rwy 36. Circling NA for Cats C and D southwest of Rwy 12 and east of Rwy 18.

**MISSED APPROACH:** Climb to 12000 direct ZOLOB and on track 143° to DOTME and hold.

ASOS <b>120.625</b>	SALT LAKE CENTER <b>133.45 317.625</b>	UNICOM <b>122.8 (CTAF)</b>
------------------------	---	-------------------------------



12000	ZOLOB	tr 143°	DOTME	JAMOP
*LNAV only			*2.7 NM to RWY 18	
2.7 NM	4.3 NM	5.2 NM		
CATEGORY	A	B	C	D
LPV DA		6652-1 1/8	410 (400-1 1/8)	
LNAV/VNAV DA		7274-4	1032 (1100-4)	
LNAV MDA	7140-1 1/4	898 (900-1 1/4)	7140-2 1/2	898 (900-2 1/2)
CIRCLING	7140-1 1/4	880 (900-1 1/4)	7140-2 1/2	8220-3
		880 (900-2 1/2)	1960 (2000-3)	



MIRL Rwy 12-30 **Ⓛ**

HIRL Rwy 18-36 **Ⓛ**

REIL Rwys 18 and 36 **Ⓛ**

SW-4, 16 APR 2026 to 14 MAY 2026

SW-4, 16 APR 2026 to 14 MAY 2026