

VOR/DME ELY <b>113.95</b> Chan 86(Y)	APP CRS <b>179°</b>	Rwy Ldg TDZE Apt Elev <b>N/A</b> <b>N/A</b> <b>6260</b>
--	------------------------	--

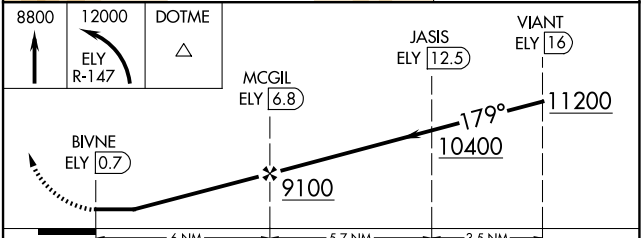
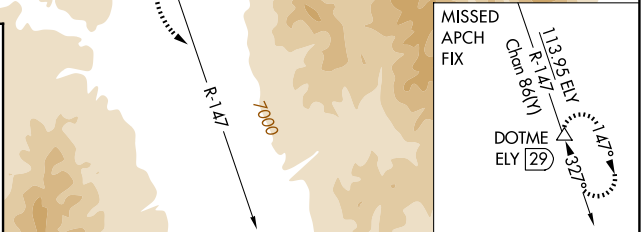
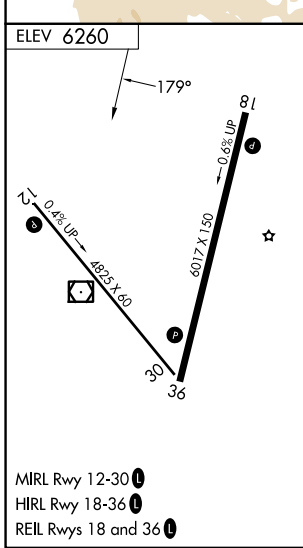
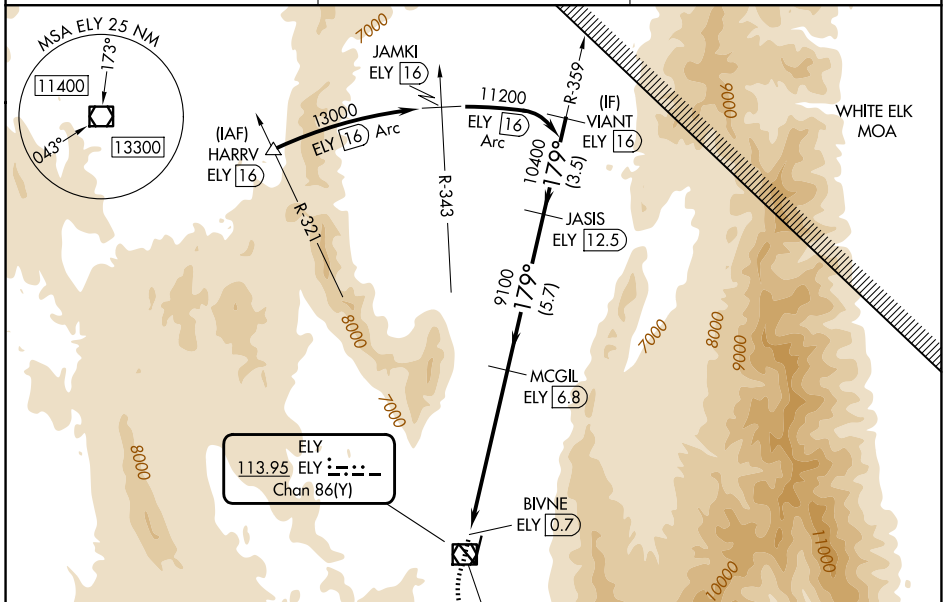
**VOR-C**  
ELY/YELLAND FLD (ELY)

DME required.

**▼** Rwy 30 helicopter visibility reduction below 1 SM NA. Circling Rwy 30 NA at night. Circling NA for Cats A and B southwest of Rwy 12 and west of Rwy 36. Circling NA for Cats C and D southwest of Rwy 12 and east of Rwy 18.

MISSED APPROACH: Climb to 8800 then climbing left turn to 12000 on ELY VOR/DME R-147 to DOTME/ELY 29 DME and hold.

ASOS <b>120.625</b>	SALT LAKE CENTER <b>133.45 317.625</b>	UNICOM <b>122.8 (CTAF) 0</b>
------------------------	---	---------------------------------



CATEGORY	A	B	C	D
CIRCLING	8140-1¼ 1880 (1900-1¼)	8140-1½ 1880 (1900-1½)	8140-3 1880 (1900-3)	8220-3 1960 (2000-3)

SW-4, 16 APR 2026 to 14 MAY 2026

SW-4, 16 APR 2026 to 14 MAY 2026