

LOC I-ASG <b>110.9</b>	APP CRS <b>183°</b>	Rwy Ldg TDZE Apt Elev	<b>4939</b> <b>1351</b> <b>1353</b>
---------------------------	------------------------	-----------------------------	---

AL-5165 (FAA)

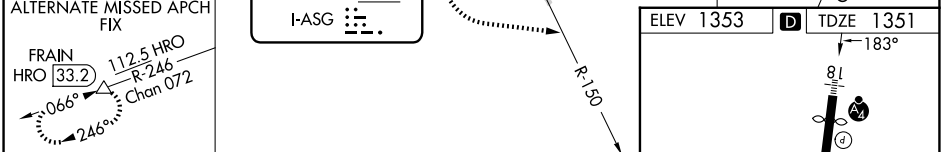
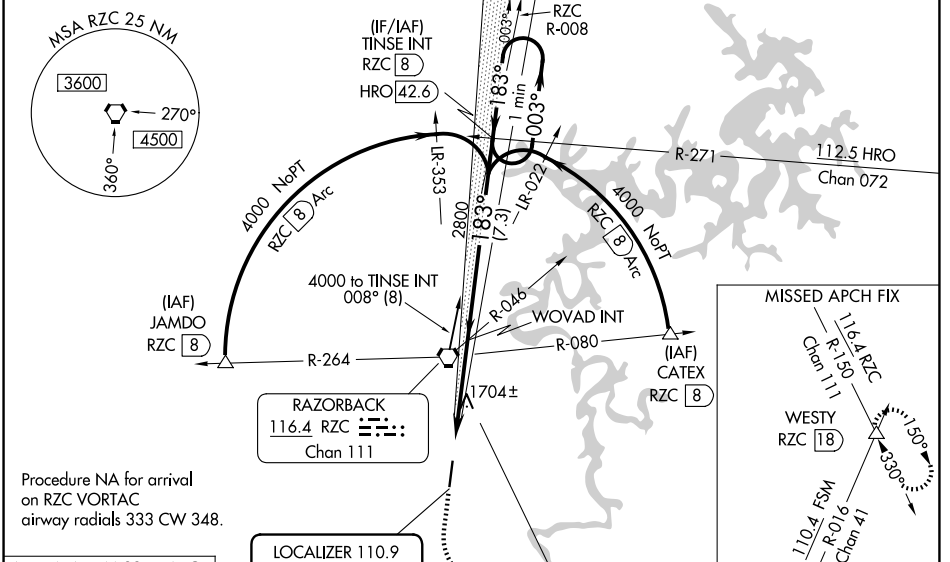
# ILS or LOC RWY 18

SPRINGDALE MUNI (ASG)

**MAJSAF**  
 Circling NA east of Rwy 18-36. Rwy 18 helicopter visibility reduction below 3/4 SM NA. Autopilot coupled approach NA below 1900. For inop ALS, increase S-ILS 18 visibility to 3/8 SM.

**MISSED APPROACH:** Climb to 2300 then climbing left turn to 4000 on heading 120° and RZC VORTAC R-150 to WESTY INT/RZC 18 DME and hold.

AWOS-3 <b>124.675</b>	RAZORBACK APP CON* <b>126.6 305.2</b>	SPRINGDALE TOWER* <b>118.2 (CTAF) 0</b>	GND CON <b>121.6</b>	REIL 18, 36 <b>122.8 0</b>	UNICOM <b>122.95</b>
--------------------------	--	--	-------------------------	-------------------------------	-------------------------



2300	4000	WESTY	
↑	hdg 120° RZC R-150	△	
			One Minute Holding Pattern
			TINSE INT
			4000
			003°
			183°
			2800
			183°
			2800
			GS 3.00° TCH 43
			4.5 NM
			7.3 NM

CATEGORY	A	B	C	D	REIL Rwy 18, 36 0
S-ILS 18		1605-3/4	254 (300-3/4)		HIRL Rwy 18-36 0
S-LOC 18	1960-3/4	609 (700-3/4)	1960-1 1/2	609 (700-1 1/2)	FAF to MAP 4.5 NM
CIRCLING	1960-1	2000-1	2020-1 3/4	2220-2 3/4	Knots 60 90 120 150 180
	607 (700-1)	647 (700-1)	667 (700-1 3/4)	867 (900-2 3/4)	Min:Sec 4:30 3:00 2:15 1:48 1:30

SC-1, 16 APR 2026 to 14 MAY 2026

SC-1, 16 APR 2026 to 14 MAY 2026