

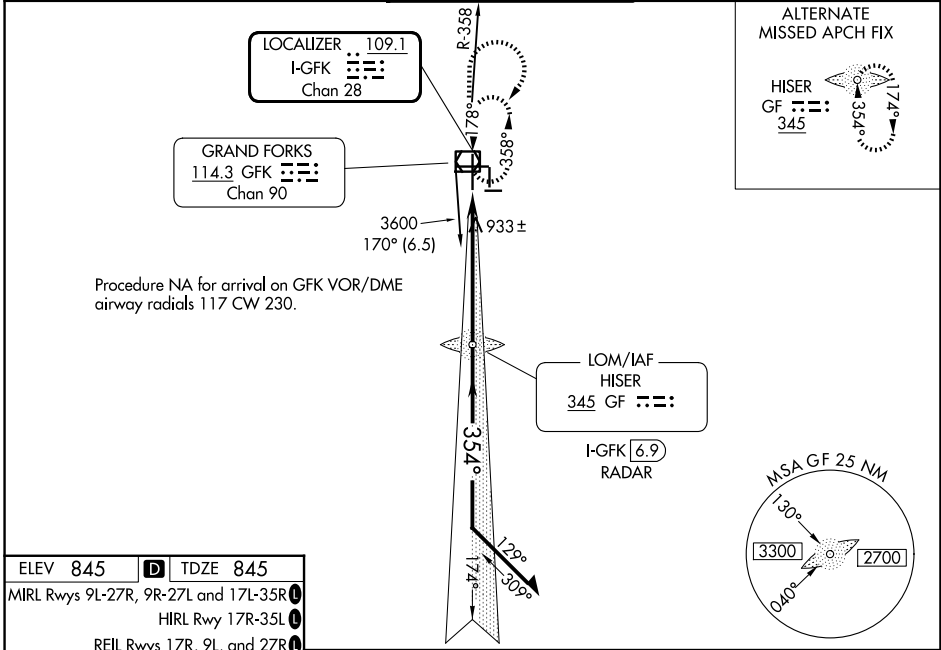
LOC/DME I-GFK 109.1 Chan 28	APP CRS 354°	Rwy Ldg 7351 TDZE 845 Apt Elev 845
--	------------------------	---

ILS or LOC RWY 35L

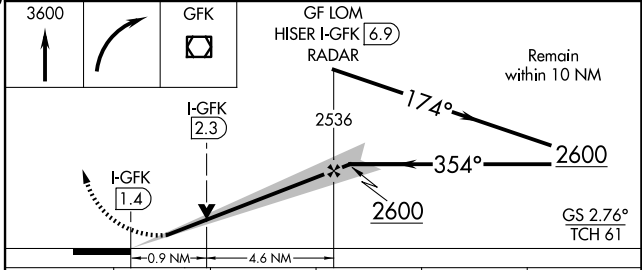
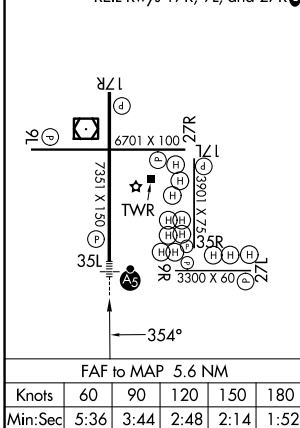
GRAND FORKS INTL (GFK)

ADF or DME or RADAR required.	<p>VDP NA when using CKN altimeter setting. When local altimeter setting not received, use CKN altimeter setting and increase DA to 1107 feet and all MDA 80 feet; increase S-LOC 35L Cats C/D/E visibility to RVR 4000 and Circling Cats C and E visibility ¼ SM. For inop ALS, increase S-ILS 35L Cat E visibility to RVR 4000 and S-LOC 35L Cat E visibility to RVR 5000. For inop ALS when using CKN altimeter setting, increase S-ILS 35L all Cats visibility to RVR 4500 and S-LOC 35L Cat C/D/E visibility to RVR 6000. Procedure turn NA for Cat E aircraft, RADAR required.</p>	<p>MALSRR</p>	<p>MISSED APPROACH: Climb to 3600 then right turn direct GFK VOR/DME and hold.</p>
-------------------------------	--	---------------	--

ATIS 119.4	GRAND FORKS APP CON * 118.1 318.1	GRAND FORKS TOWER * 118.4 (CTAF) 350.35	GND CON 124.575	UNICOM 122.95
----------------------	---	---	---------------------------	-------------------------



ELEV 845	D	TDZE 845
MIRL Rwy 9L-27R, 9R-27L and 17L-35R		
HIRL Rwy 17R-35L		
REIL Rwy 17R, 9L, and 27R		



CATEGORY	A	B	C	D	E
S-ILS 35L	1045/24 200 (200-½)				
S-LOC 35L	1200/24	355 (400-½)	1200/30	355 (400-¾)	
CIRCLING	1260-1 415 (500-1)	1300-1 455 (500-1)	1400-1½ 555 (600-1½)	1420-2 575 (600-2)	1520-2½ 675 (700-2½)

NC-1, 16 APR 2026 to 14 MAY 2026

NC-1, 16 APR 2026 to 14 MAY 2026