

LOC/DME I-GFK <b>109.1</b> Chan <b>28</b>	APP CRS <b>174°</b>	Rwy Ldg TDZE Apt Elev	<b>7351</b> <b>843</b> <b>845</b>
---	------------------------	-----------------------------	---

# LOC BC RWY 17R

GRAND FORKS INTL (GFK)

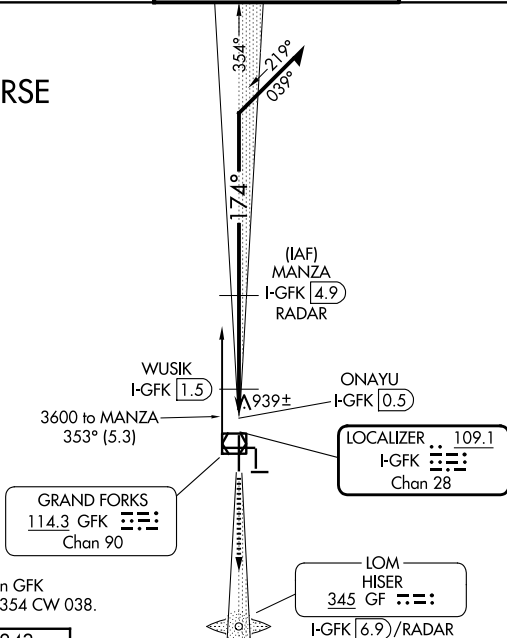
DME or ADF or RADAR required.

▼ When local altimeter setting not received, use Crookston altimeter setting and increase all MDA 80 feet; increase S-17R Cat C visibility 1/8 SM and Circling Cat C visibility 1/4 SM. Increase WUSIK fix minimums S-17R Cat C visibility and Circling Cat C visibility 1/4 SM.

MISSED APPROACH: Climb to 2600 on I-GFK south course (174°) to HISER LOM/I-GFK 6.9 DME/RADAR and hold.

ATIS <b>119.4</b>	GRAND FORKS APP CON * <b>118.1 318.1</b>	GRAND FORKS TOWER * <b>118.4 (CTAF) 350.35</b>	GND CON <b>124.575</b>	UNICOM <b>122.95</b>
----------------------	---	---	---------------------------	-------------------------

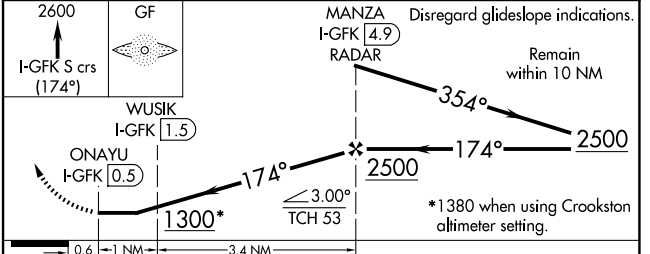
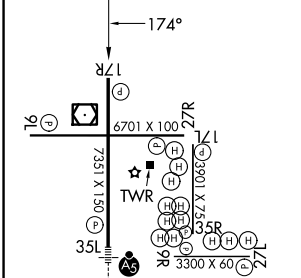
## BACK COURSE



Procedure NA for arrival on GFK  
VOR/DME airway radials 354 CW 038.



ELEV 845	<b>D</b>	TDZE 843
----------	----------	----------



CATEGORY	A	B	C	D
S-17R	1300-1	457 (500-1)	1300-1 <sup>3</sup> / <sub>8</sub> 457 (500-1 <sup>3</sup> / <sub>8</sub> )	1300-1 <sup>1</sup> / <sub>2</sub> 457 (500-1 <sup>1</sup> / <sub>2</sub> )
CIRCLING	1300-1	455 (500-1)	1400-1 <sup>1</sup> / <sub>2</sub> 555 (600-1 <sup>1</sup> / <sub>2</sub> )	1420-2 575 (600-2)
WUSIK FIX MINIMUMS				
S-17R	1200-1 357 (400-1)			1200-1 <sup>1</sup> / <sub>4</sub> 357 (400-1 <sup>1</sup> / <sub>4</sub> )
CIRCLING	1260-1 415 (500-1)	1300-1 455 (500-1)	1400-1 <sup>1</sup> / <sub>2</sub> 555 (500-1 <sup>1</sup> / <sub>2</sub> )	1420-2 575 (600-2)

MIRL Rwy 9L-27R, 9R-27L and 17L-35R					
HIRL Rwy 17R-35L					
REIL Rwy 17R, 9L, and 27R					
FAF to MAP 4.4 NM					
Knots	60	90	120	150	180
Min:Sec	4:24	2:56	2:12	1:46	1:28

NC-1, 16 APR 2026 to 14 MAY 2026

NC-1, 16 APR 2026 to 14 MAY 2026