

WAAS CH 72747 W17B	APP CRS 174°	Rwy Ldg TDZE Apt Elev	3901 843 845
--	------------------------	-----------------------------	---

RNAV (GPS) RWY 17L

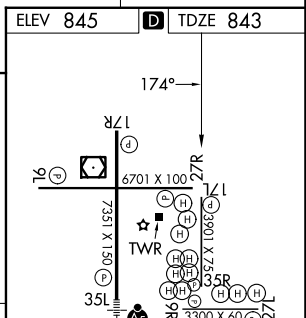
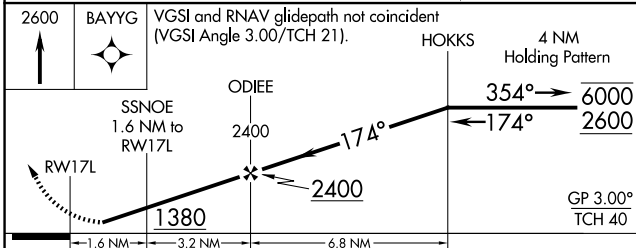
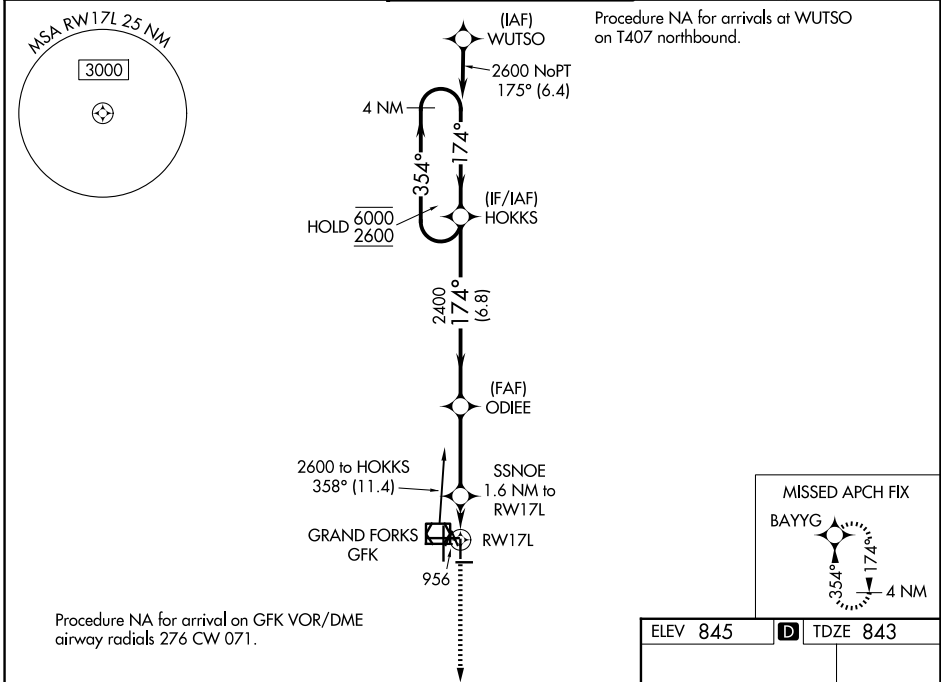
GRAND FORKS INTL (GFK)

RNP APCH - GPS.

⚠ Rwy 17L helicopter visibility reduction below $\frac{3}{4}$ SM NA.
⚠ For uncompensated Baro-VNAV systems, LNAV/VNAV NA below -22°C or above 54°C.

MISSED APPROACH: Climb to 2600 direct BAYYG and hold.

ATIS 119.4	GRAND FORKS APP CON * 118.1 318.1	GRAND FORKS TOWER * 118.4 (CTAF) 0 350.35	GND CON 124.575	UNICOM 122.95
----------------------	---	--	---------------------------	-------------------------



CATEGORY	A	B	C	D
LPV DA		1093- $\frac{3}{4}$	250 (300- $\frac{3}{4}$)	
LNAV/VNAV DA		1117- $\frac{7}{8}$	274 (300- $\frac{7}{8}$)	
LNAV MDA		1220-1	377 (400-1)	
CIRCLING	1260-1 415 (500-1)	1300-1 455 (500-1)	1400-1 $\frac{1}{2}$ 555 (600-1 $\frac{1}{2}$)	1420-2 575 (600-2)

MIRL Rwy 9L-27R, 9R-27L and 17L-35R

HIRL Rwy 17R-35L

REIL Rwy 17R, 9L, and 27R

NC-1, 16 APR 2026 to 14 MAY 2026

NC-1, 16 APR 2026 to 14 MAY 2026