

WAAS CH 63199 W17A	APP CRS 174°	Rwy Ldg TDZE Apt Elev	7351 843 845
--	------------------------	-----------------------------	---

RNAV (GPS) RWY 17R

GRAND FORKS INTL (GFK)

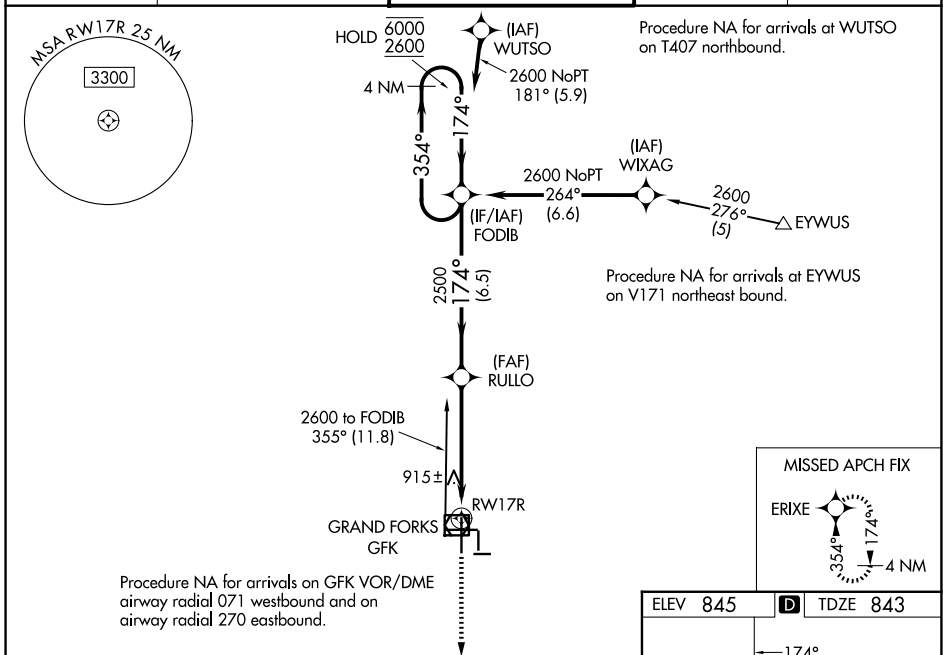
RNP APCH - GPS.

Baro-VNAV NA when using Crookston altimeter setting. For uncompensated Baro-VNAV systems, LNAV/VNAV NA below -20°C or above 54°C. VDP NA with Crookston altimeter setting.

When local altimeter setting not received, use Crookston altimeter setting and increase all DA 62 feet and all MDA 80 feet and increase LPV and LNAV/VNAV all Cats visibility $\frac{1}{8}$ SM, LNAV Cats C/D visibility $\frac{1}{8}$ SM, and Circling Cat C visibility $\frac{1}{4}$ SM.

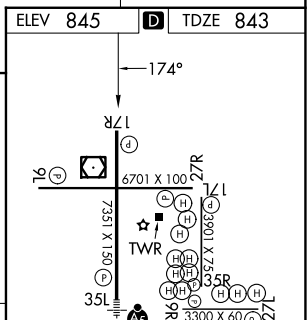
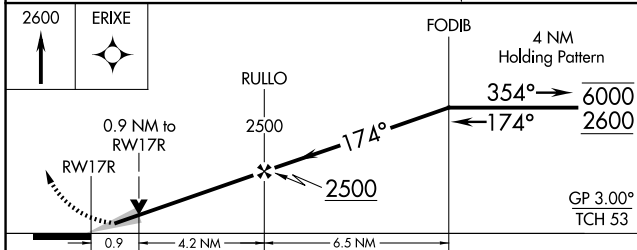
MISSED APPROACH: Climb to 2600 direct ERIXE and hold.

ATIS 119.4	GRAND FORKS APP CON * 118.1 318.1	GRAND FORKS TOWER * 118.4 (CTAF) 350.35	GND CON 124.575	UNICOM 122.95
----------------------	---	---	---------------------------	-------------------------



NC-1, 16 APR 2026 to 14 MAY 2026

NC-1, 16 APR 2026 to 14 MAY 2026



CATEGORY	A	B	C	D
LPV DA		1043- $\frac{3}{4}$	200 (200- $\frac{3}{4}$)	
LNAV/VNAV DA		1093- $\frac{3}{4}$	250 (300- $\frac{3}{4}$)	
LNAV MDA		1180-1	337 (400-1)	
CIRCLING	1260-1 415 (500-1)	1300-1 455 (500-1)	1400-1 $\frac{1}{2}$ 555 (600-1 $\frac{1}{2}$)	1420-2 575 (600-2)

ELEV 845	D	TDZE 843
----------	----------	----------

MIRL Rwsy 9L-27R, 9R-27L and 17L-35R
HIRL Rwy 17R-35L
REIL Rwsy 17R, 9L, and 27R