

WAAS CH 58104 W09A	APP CRS 084°	Rwy Ldg TDZE Apt Elev	6701 845 845
--	------------------------	-----------------------------	---

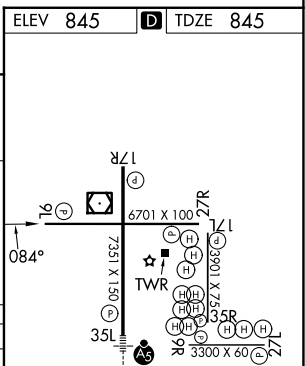
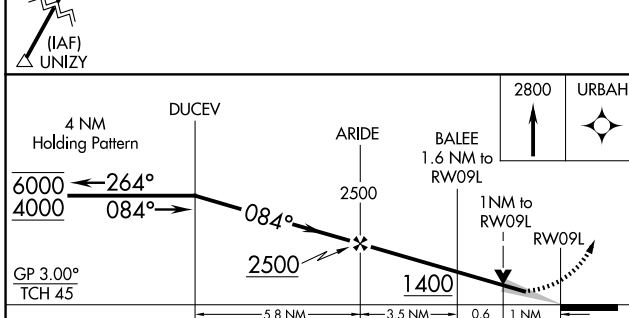
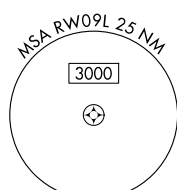
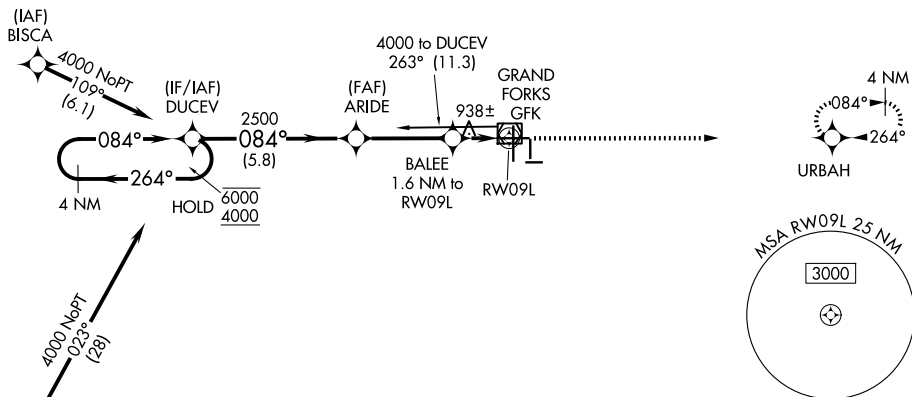
RNAV (GPS) RWY 9L

GRAND FORKS INTL (GFK)

RNP APCH - GPS.		MISSED APPROACH: Climb to 2800 direct URBAH and hold.	
<p>▼ Baro-VNAV and VDP NA when using CKN altimeter setting. For uncompensated Baro-VNAV systems, LNAV/VNAV NA below -21°C or above 54°C. When local altimeter setting not received, use CKN altimeter setting and increase LPV DA to 1106 feet and all visibilities 1/8 SM. Increase LNAV/VNAV DA to 1156 feet and all visibilities 1/8 SM. Increase all MDAs 80 feet and LNAV visibility Cat C/D 1/4 SM, and Circling visibility Cat C 1/4 SM.</p>			

ATIS 119.4	GRAND FORKS APP CON ★ 118.1 318.1	GRAND FORKS TOWER ★ 118.4 (CTAF) 350.35	GND CON 124.575	UNICOM 122.95
----------------------	---	---	---------------------------	-------------------------

Procedure NA for arrivals at GFK VOR/DME on V55 northeast bound.



CATEGORY	A	B	C	D
LPV DA		1045-3/4	200 (200-3/4)	
LNAV/VNAV DA		1095-3/4	250 (300-3/4)	
LNAV MDA		1200-1	355 (400-1)	
CIRCLING	1260-1 415 (500-1)	1300-1 455 (500-1)	1400-1 1/2 555 (600-1 1/2)	1420-2 575 (600-2)

ELEV 845	TDZE 845
MIRL Rwy 9L-27R, 9R-27L and 17L-35R	
HIRL Rwy 17R-35L	
REIL Rwy 17R, 9L, and 27R	

NC-1, 16 APR 2026 to 14 MAY 2026

NC-1, 16 APR 2026 to 14 MAY 2026