

VORTAC BYP 114.6 Chan 93	APP CRS 280°	Rwy Ldg TDZE Apt Elev	N/A N/A 746
--	------------------------	-----------------------------	--

VOR/DME-A

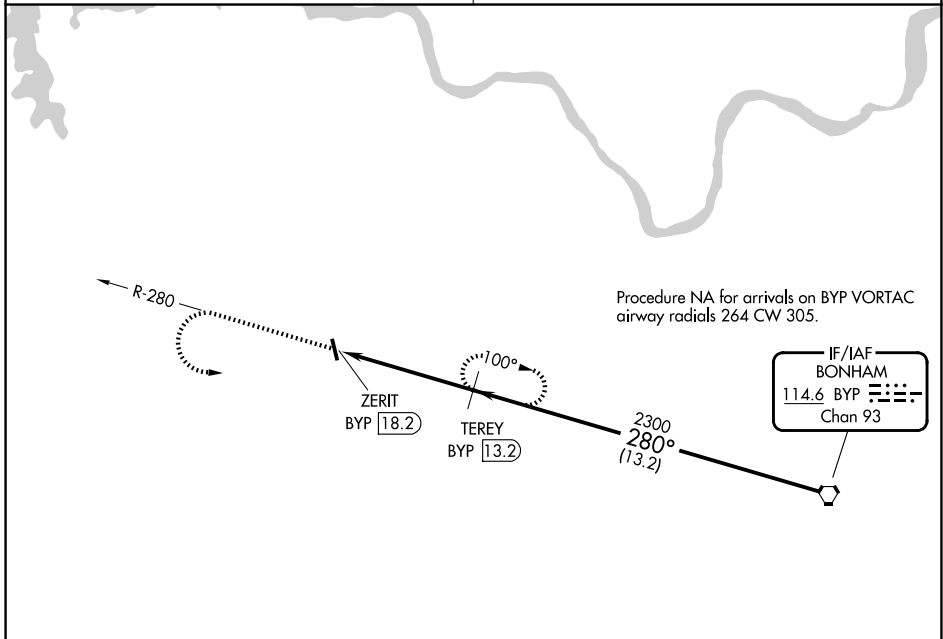
SHERMAN MUNI (SWI)

⚠ Use Sherman/Denison altimeter setting, when not received, use Dallas Love Fld altimeter setting and increase all MDA 140 feet, increase visibility Cat B ¼ mile, Cat C ½ mile, and Cat D ¾ mile. Procedure NA at night.
⚠ Helicopter visibility reduction below 1 SM NA.

MISSED APPROACH: Climb to 2300, then climbing left turn to 2400 on BYP R-280 to TEREY/13.2 DME and hold.

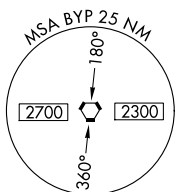
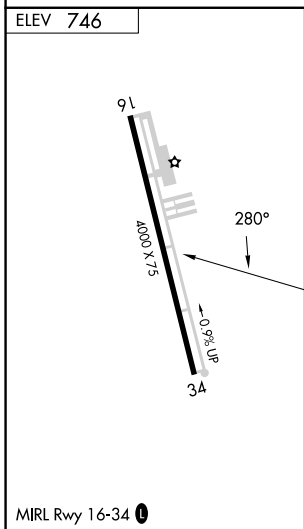
FORT WORTH CENTER
124.75 323.0

UNICOM
122.8 (CTAF) 0



SC-2, 16 APR 2026 to 14 MAY 2026

SC-2, 16 APR 2026 to 14 MAY 2026



2300	2400 BYP R-280	TEREY BYP 13.2	TEREY BYP 13.2	BYP VORTAC
ZERIT BYP 18.2		2300		
5 NM		13.2 NM		
CATEGORY	A	B	C	D
CIRCLING	1300-1 554 (600-1)	1420-1 674 (700-1)	1620-2½ 874 (900-2½)	1620-2¾ 874 (900-2¾)