

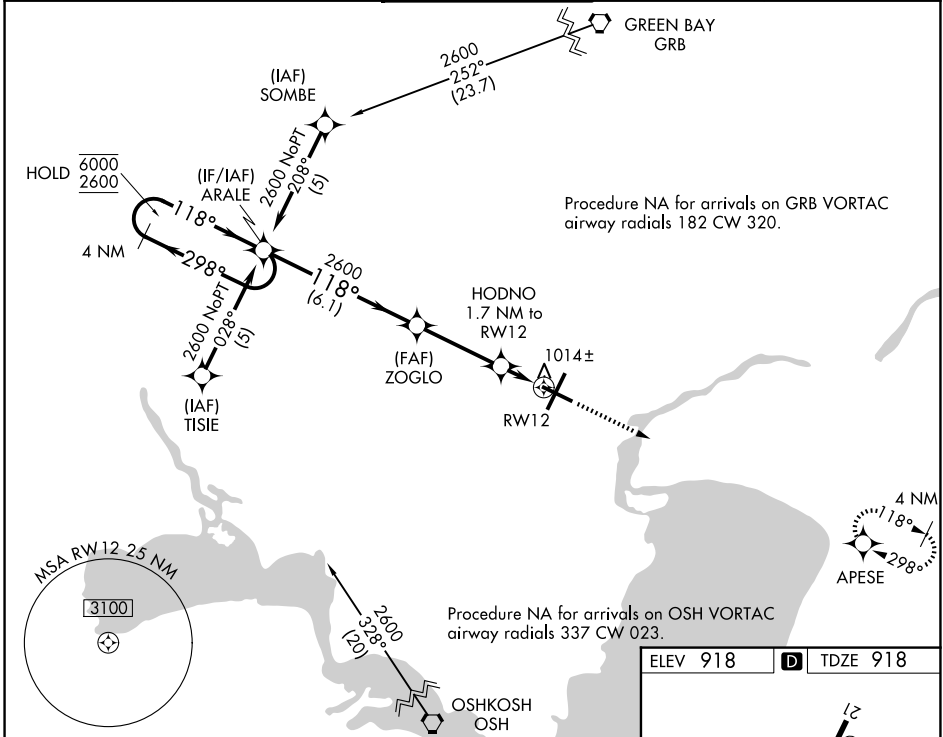
WAAS CH 82716 W12A	APP CRS 118°	Rwy Ldg TDZE Apt Elev	6501 918 918
--	------------------------	-----------------------------	---

RNAV (GPS) RWY 12

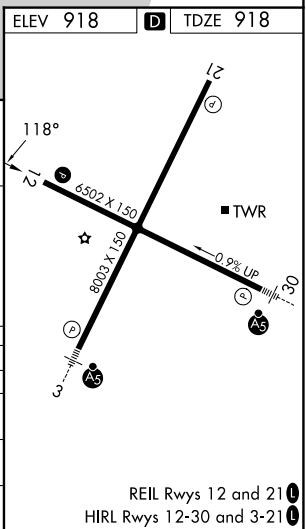
APPLETON INTL (ATW)

RNP APCH - GPS.		MISSED APPROACH: Climb to 2700 direct APESE and hold.	
▼ For uncompensated Baro-VNAV systems, LNAV/VNAV NA below -16°C ▲ or above 54°C.			

ATIS 127.15	GREEN BAY APP CON* 126.3 338.2	APPLETON TOWER* 119.6 (CTAF)	GND CON 121.7	UNICOM 122.95
-----------------------	--	--	-------------------------	-------------------------



4 NM Holding Pattern		VGSi and RNAV glidepath not coincident (VGSi Angle 3.00/TCH 35).		2700	APESE
<p>6000 ← 298°</p> <p>2600 ← 118°</p> <p>GP 3.00° TCH 50</p>		<p>2600</p> <p>1500</p> <p>1 NM to RW12</p>		↑	✧
← 6.1 NM		← 3.4 NM		0.7	1 NM
CATEGORY	A	B	C	D	
LPV DA		1118- ³ / ₄	200 (200- ³ / ₄)		
LNAV/VNAV DA		1280-1	362 (400-1)		
LNAV MDA		1280-1	362 (400-1)		
CIRCLING	1340-1 422 (500-1)	1380-1 462 (500-1)	1400-1½ 482 (500-1½)	1480-2 562 (600-2)	



EC-3, 16 APR 2026 to 14 MAY 2026

EC-3, 16 APR 2026 to 14 MAY 2026