

|  |                        |   |
|--|------------------------|---|
| WAAS<br>CH <b>56223</b><br><b>W03A</b> | APP CRS<br><b>028°</b> | Rwy Ldg <b>8002</b><br>TDZE <b>888</b><br>Apt Elev <b>918</b> |
|--|------------------------|---|

# RNAV (GPS) RWY 3

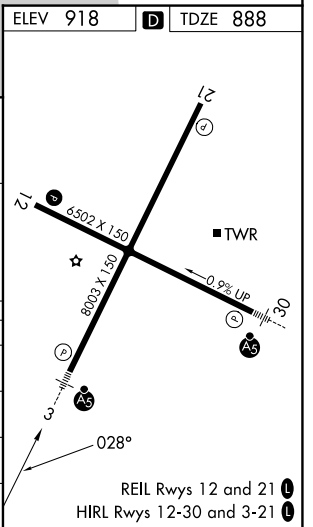
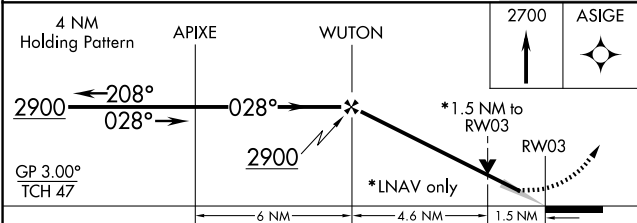
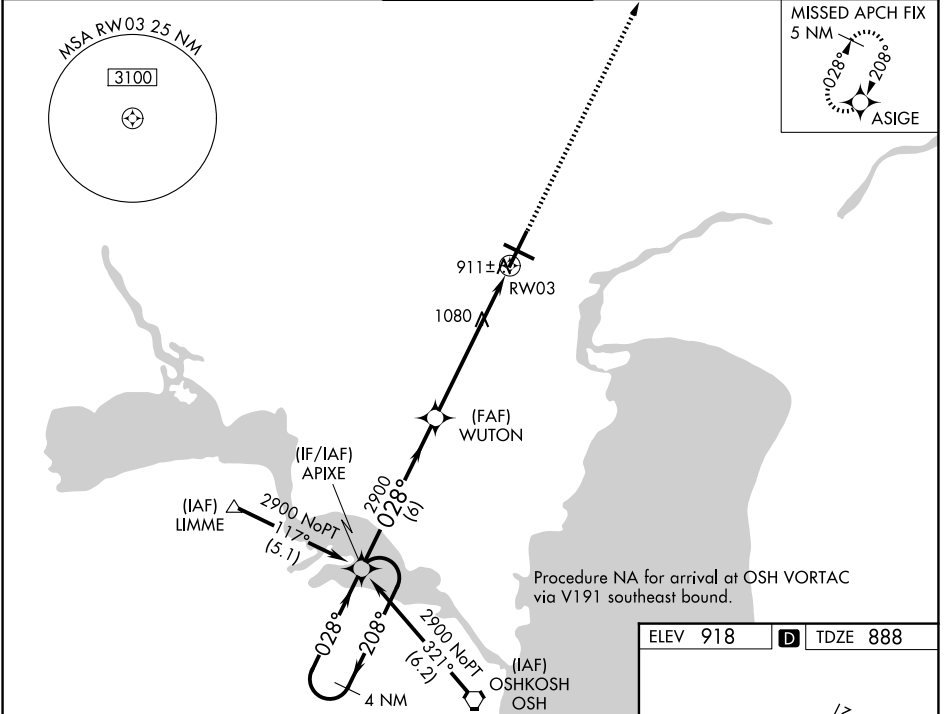
APPLETON INTL (ATW)

**⚠** Baro-VNAV NA below -16°C (4°F). DME/DME RNP-0.3 NA. When local altimeter setting not received use Green Bay-Austin Straubel Intl altimeter setting and increase all DAs/MDAs 100 feet. Baro/VNAV and VDP NA when using Green Bay-Austin Straubel Intl altimeter setting. For inoperative MALSR increase LPV visibility to RVR 4000 all Cats.

**MALSR**  
AS

**MISSED APPROACH:**  
Climb to 2700 direct ASIGE and hold.

|                       |  |   |                         |                         |
|-----------------------|--|---|-------------------------|-------------------------|
| ATIS<br><b>127.15</b> | GREEN BAY APP CON*<br><b>126.3 338.2</b> | APPLETON TOWER*<br><b>119.6 (CTAF)</b> <b>0</b> | GND CON<br><b>121.7</b> | UNICOM<br><b>122.95</b> |
|-----------------------|--|---|-------------------------|-------------------------|



| CATEGORY      | A       | B           | C                       | D                       |
|---------------|---------|-------------|-------------------------|-------------------------|
| LPV DA        |         | 1138/24     | 250 (300-½)             |                         |
| LNAV/ VNAV DA |         | 1232/40     | 344 (400-¾)             |                         |
| LNAV MDA      | 1400/24 | 512 (500-½) | 1400/50<br>512 (500-1)  | 1400/60<br>512 (500-1¼) |
| CIRCLING      | 1400-1  | 482 (500-1) | 1400-1½<br>482 (500-1½) | 1480-2<br>562 (600-2)   |

EC-3, 16 APR 2026 to 14 MAY 2026

EC-3, 16 APR 2026 to 14 MAY 2026