

WAAS CH 86936 W14A	APP CRS 141°	Rwy Ldg 5600 TDZE 953 Apt Elev 953
--	------------------------	---

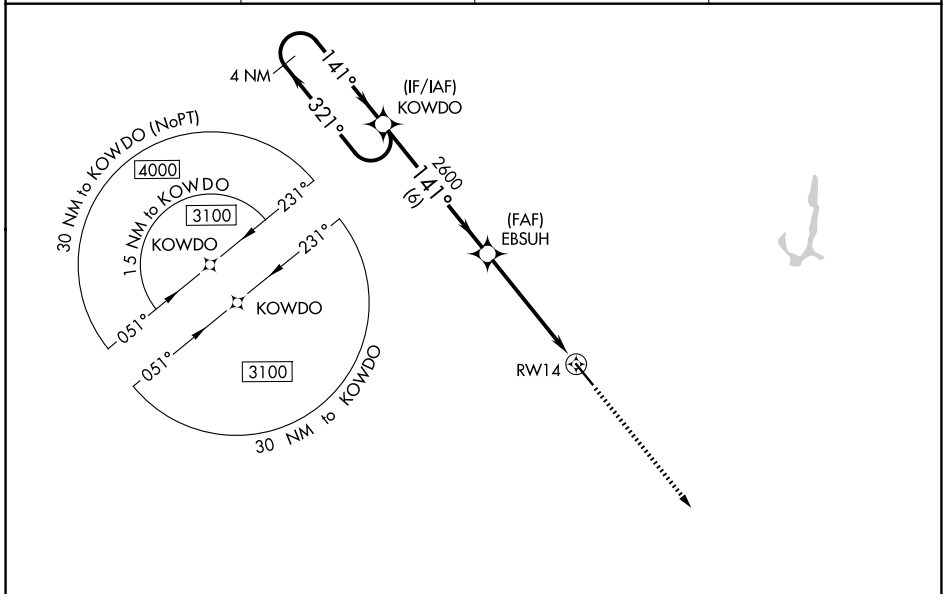
RNAV (GPS) RWY 14

NEWTON MUNI-EARL JOHNSON FLD (TNU)

⚠ DME/DME RNP-0.3 NA. When local altimeter setting not received use Des Moines altimeter setting and increase all DA/MDA 80 feet; increase LPV and LNAV/VNAV all Cats and LNAV Cats C/D and Circling Cat C/D visibility ¼ mile. For uncompensated Baro-VNAV systems, LNAV/VNAV NA below -13°C (9°F) or above 54°C (130°F). Rwy 14 helicopter visibility reduction below ¾ SM NA. Baro-VNAV and VDP NA when using Des Moines altimeter setting.

MISSED APPROACH: Climb to 2700 direct UBHIT and hold.

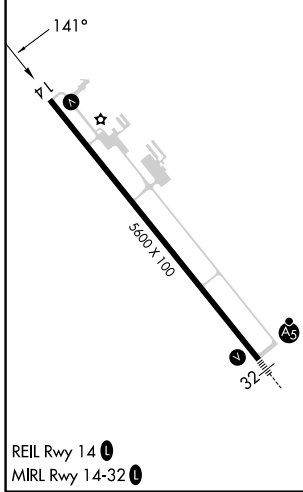
AWOS-3 132.275	DES MOINES APP CON 123.9 307.15	CLNC DEL 126.3	UNICOM 122.8 (CTAF) 0
--------------------------	---	--------------------------	---------------------------------



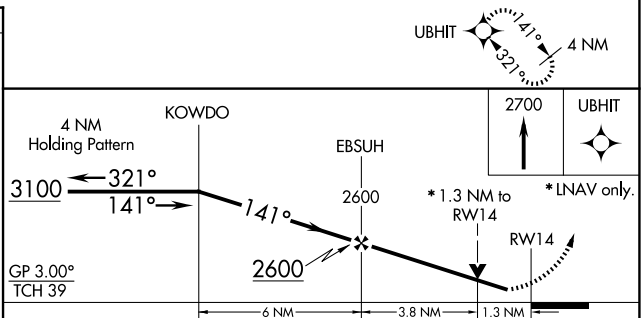
NC-3, 16 APR 2026 to 14 MAY 2026

NC-3, 16 APR 2026 to 14 MAY 2026

ELEV 953	TDZE 953
-----------------	-----------------



REIL Rwy 14 **0**
MIRL Rwy 14-32 **0**



CATEGORY	A	B	C	D
LPV DA	1203-7/8 250 (300-7/8)			
LNAV/VNAV DA	1203-7/8 250 (300-7/8)			
LNAV MDA	1420-1 467 (500-1)		1420-1 3/8 467 (500-1 3/8)	
CIRCLING	1420-1 467 (500-1)	1440-1 1/2 487 (500-1 1/2)	1520-1 1/2 567 (600-1 1/2)	1600-2 647 (700-2)