

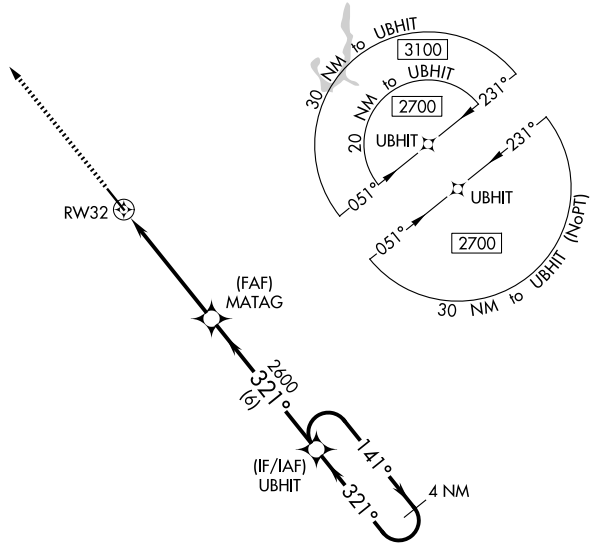
WAAS CH <b>99702</b> <b>W32A</b>	APP CRS <b>321°</b>	Rwy Ldg TDZE Apt Elev	<b>5600</b> <b>950</b> <b>953</b>
--	------------------------	-----------------------------	---

# RNAV (GPS) RWY 32

NEWTON MUNI-EARL JOHNSON FLD (TNU)

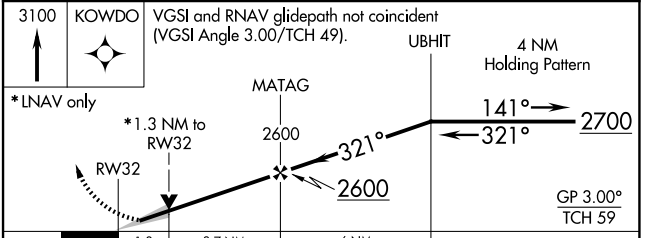
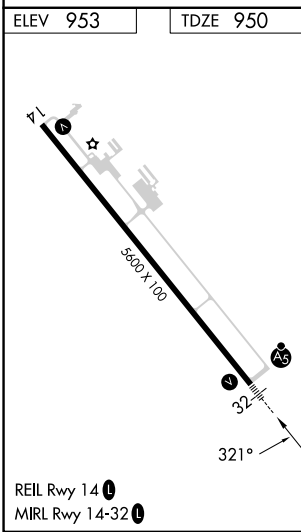
<p><b>⚠</b> For uncompensated Baro-VNAV systems, LNAV/VNAV NA below -19°C (2°F) or above 54°C (130°F). DME/DME RNP-0.3 NA. For inop MALSR, increase LNAV/VNAV all Cats visibility to ¾ SM.</p>	<p><b>MALSR</b></p>	<p>MISSED APPROACH: Climb to 3100 direct KOWDO and hold.</p>
--	---------------------	--

AWOS-3 <b>132.275</b>	DES MOINES APP CON <b>123.9 307.15</b>	CLNC DEL <b>126.3</b>	UNICOM <b>122.8 (CTAF) 0</b>
--------------------------	---	--------------------------	---------------------------------



NC-3, 16 APR 2026 to 14 MAY 2026

NC-3, 16 APR 2026 to 14 MAY 2026



CATEGORY	A	B	C	D
LPV DA	1150-½		200 (200-½)	
LNAV/VNAV DA	1202-½		252 (300-½)	
LNAV MDA	1400-½ 450 (500-½)		1400-⅞ 450 (500-⅞)	
CIRCLING	1420-1 467 (500-1)	1440-1 487 (500-1)	1520-1½ 567 (600-1½)	1600-2 647 (700-2)