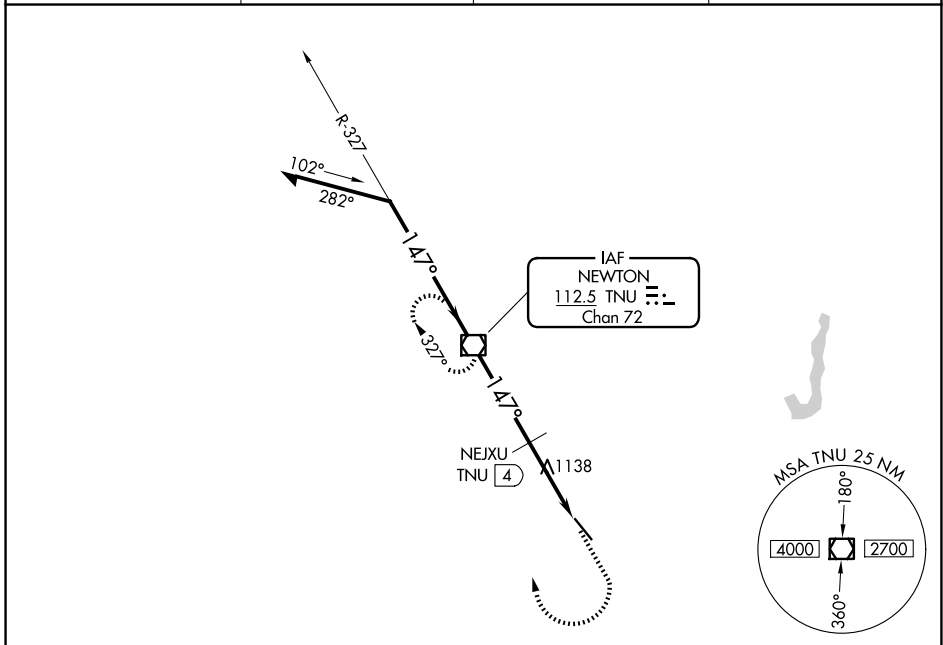


VOR/DME TNU 112.5 Chan 72	APP CRS 147°	Rwy Ldg 5600 TDZE 953 Apt Elev 953
---	------------------------	---

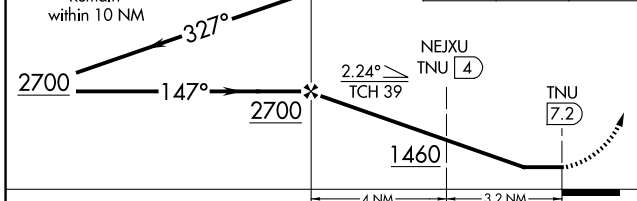
VOR RWY 14

NEWTON MUNI-EARL JOHNSON FLD (TNU)

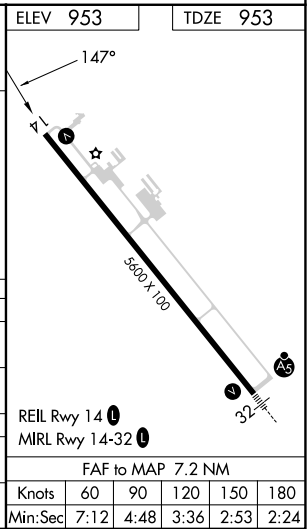
▽ ▲ Rwy 14 helicopter visibility reduction below ¾ SM NA.	MISSED APPROACH: Climb to 2700 then right turn direct TNU VOR/DME and hold.		
AWOS-3 132.275	DES MOINES APP CON 123.9 307.15	CLNC DEL 126.3	UNICOM 122.8 (CTAF) 0



VGSI and descent angles not coincident (VGSI Angle 3.00/TCH 39).	2700	TNU	ELEV 953	TDZE 953
Remain within 10 NM	2700	NEJXU TNU (4)		



CATEGORY	A	B	C	D
S-14	1460-1	507 (600-1)	1460-1⅜ 507 (600-1⅜)	1460-1½ 507 (600-1½)
CIRCLING	1460-1	507 (600-1)	1520-1½ 567 (600-1½)	1600-2 647 (700-2)
NEXJU DME MINIMUMS				
S-14	1400-1	447 (500-1)	1400-1⅜ 447 (500-1⅜)	1400-1½ 447 (500-1½)
CIRCLING	1420-1 467 (500-1)	1440-1 487 (500-1)	1520-1½ 567 (600-1½)	1600-2 647 (700-2)



REIL RWY 14 0	MIRL RWY 14-32 0	FAF to MAP 7.2 NM				
Knots	60	90	120	150	180	
Min:Sec	7:12	4:48	3:36	2:53	2:24	

NC-3, 16 APR 2026 to 14 MAY 2026

NC-3, 16 APR 2026 to 14 MAY 2026