

WAAS CH 57931 W27A	APP CRS 274°	Rwy Idg TDZE Apt Elev	4000 1372 1376
--	------------------------	-----------------------------	---

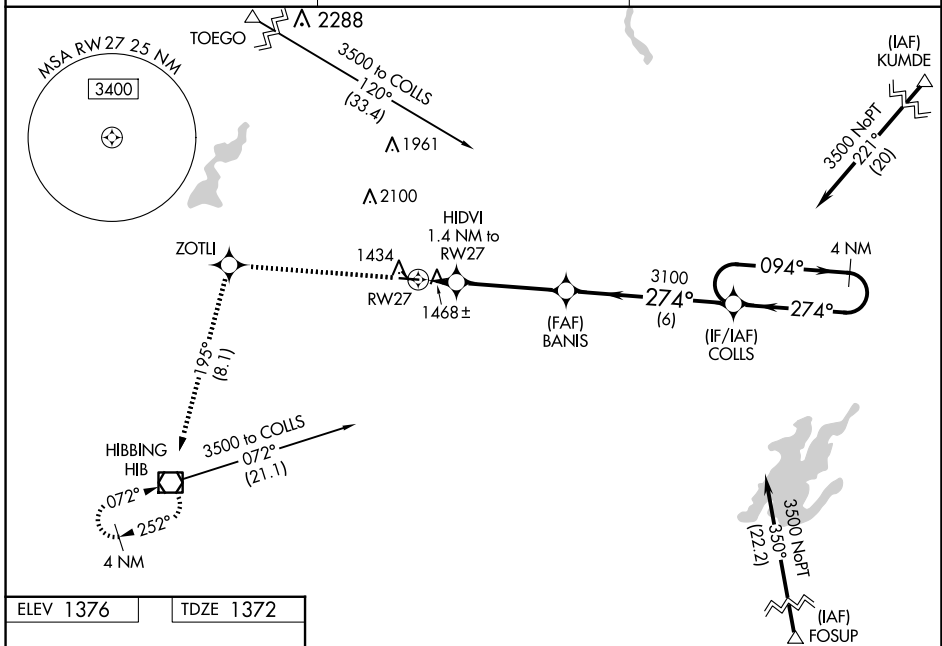
RNAV (GPS) RWY 27

EVELETH/VIRGINIA MUNI (EVM)

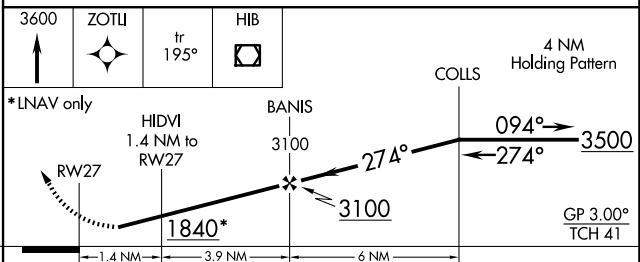
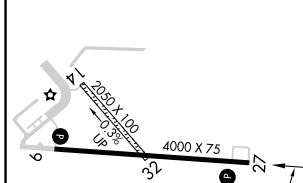
⚠ Baro-VNAV NA when using Hibbing altimeter setting. For uncompensated Baro-VNAV systems, procedure NA below -17°C (2°F) or above 54°C (130°F). DME/DME RNP-0.3 NA. Circling to Rwy 14 and 32 NA. Rwy 27 helicopter visibility reduction below 3/4 SM NA. When local altimeter setting not received, use Hibbing altimeter setting and increase LPV DA to 1670 feet, increase LNAV/VNAV DA to 1687 feet; increase all MDAs 40 feet and increase LNAV Cat C/D visibility 1/8 SM.

MISSED APPROACH:
Climb to 3600 direct ZOTLI and on track 195° to HIB VOR/DME and hold.

AWOS-3 118.825	DULUTH APP CON 125.45 233.7	UNICOM 122.7 (CTAF) 1
--------------------------	---------------------------------------	---------------------------------



ELEV 1376	TDZE 1372
-----------	-----------



CATEGORY	A	B	C	D
LPV DA	1634-1 1/8		262 (300-1 1/8)	
LNAV/VNAV DA	1651-1		279 (300-1)	
LNAV MDA	1720-1		348 (400-1)	
CIRCLING	1880-1 504 (600-1)	1940-1 564 (600-1)	2260-2 3/4 884 (900-2 3/4)	2460-3 1084 (1100-3)

MIRL Rwy 9-27 and 14-32 1
REIL Rwy 27 1

NC-1, 16 APR 2026 to 14 MAY 2026

NC-1, 16 APR 2026 to 14 MAY 2026