

WAAS CH 56505 W01A	APP CRS 004°	Rwy Ldg TDZE Apt Elev	6501 760 772
--	------------------------	-----------------------------	---

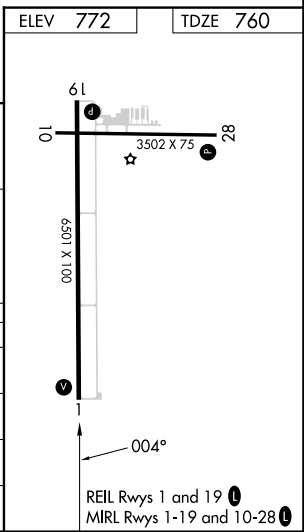
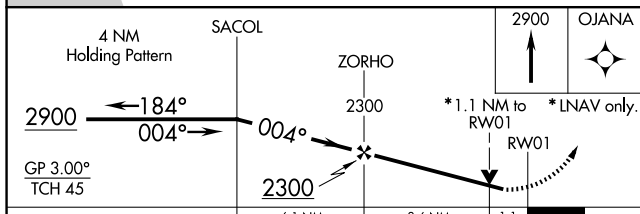
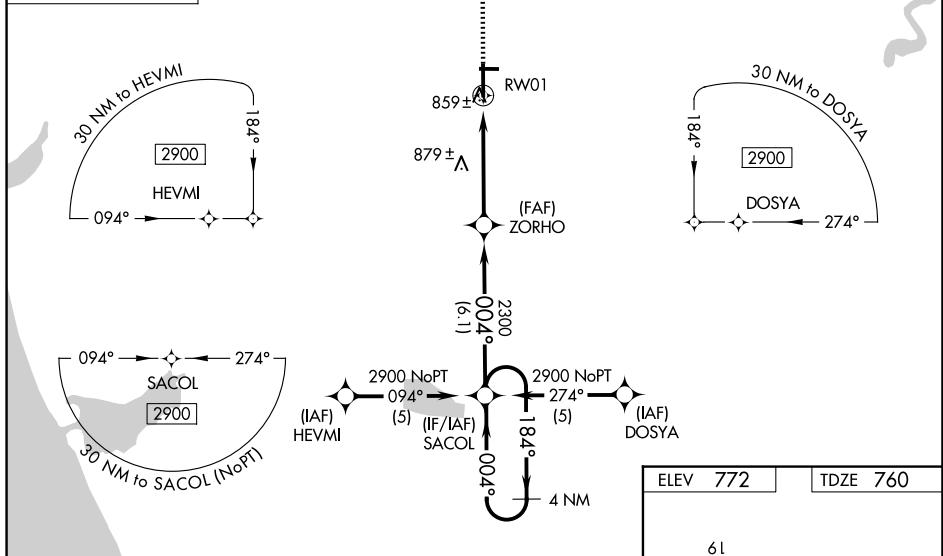
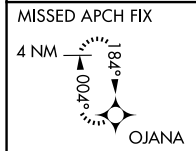
RNAV (GPS) RWY 1

FREMONT MUNI (F'FX)

▼ Baro-VNAV NA when using Muskegon altimeter setting. For uncompensated Baro-VNAV systems, LNAV/VNAV NA below -16°C (4°F) or above 47°C (116°F). Rwy 1 helicopter visibility reduction below ¾ SM NA. DME/DME RNP-0.3 NA. When local altimeter setting not received, use Muskegon altimeter setting and increase all DA 65 feet, and all visibilities ¼ mile. Increase all MDA 80 feet, and Cat C/D visibilities ¼ mile. VDP NA when using Muskegon altimeter setting.

MISSED APPROACH:
Climb to 2900 direct OJANA and hold.

AWOS-3P 118.775	GREAT LAKES APP CON * 119.8 290.35	CLNC DEL 118.25	UNICOM 123.0 (CTAF) 0
---------------------------	--	---------------------------	---------------------------------



CATEGORY	A	B	C	D
LPV DA	1036-1		276 (300-1)	
LNAV/ VNAV DA	1129-1¼		369 (400-1¼)	
LNAV MDA	1140-1		380 (400-1)	
			1140-1¼	
			380 (400-1¼)	
CIRCLING	1260-1 488 (500-1)		1460-2 1460-2¼	
			688 (700-2) 688 (700-2¼)	

EC-1, 16 APR 2026 to 14 MAY 2026

EC-1, 16 APR 2026 to 14 MAY 2026