

| | | | |
|--|------------------------|-----------------------------|---|
| WAAS CH 82405 W19A | APP CRS 184° | Rwy Ldg TDZE Apt Elev | 6501 769 772 |
|--|------------------------|-----------------------------|---|

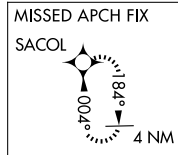
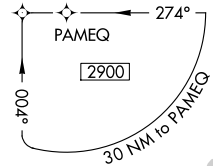
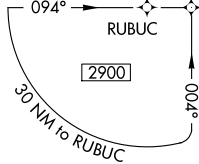
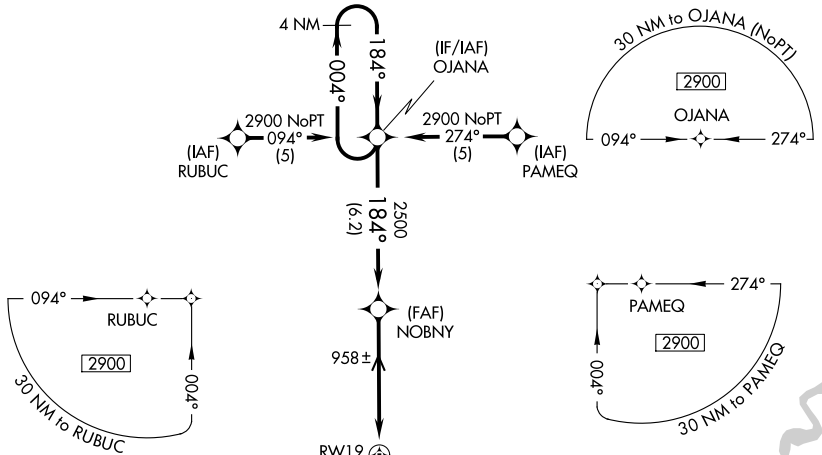
RNAV (GPS) RWY 19

FREMONT MUNI (F'FX)

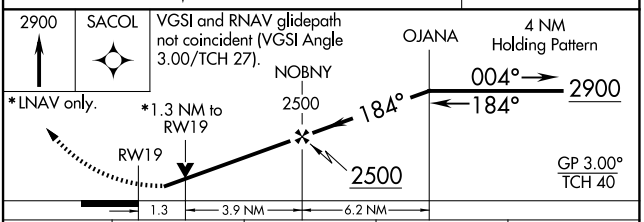
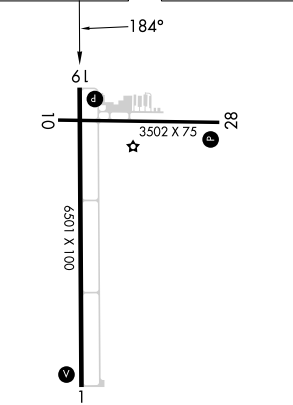
⚠ Baro-VNAV NA when using Muskegon altimeter setting. For uncompensated Baro-VNAV systems, LNAV/VNAV NA below -16°C (4°F) or above 47°C (116°F). Rwy 19 helicopter visibility reduction below 3/4 SM NA. DME/DME RNP-0.3 NA. When local altimeter setting not received, use Muskegon altimeter setting and increase all DA 65 feet, and all visibilities 1/4 mile. Increase all MDA 80 feet, and Cat C/D visibilities 1/4 mile. VDP NA when using Muskegon altimeter setting.

MISSED APPROACH:
Climb to 2900 direct SACOL and hold.

| | | | |
|---------------------------|--|---------------------------|--|
| AWOS-3P 118.775 | GREAT LAKES APP CON ★ 119.8 290.35 | CLNC DEL 118.25 | UNICOM 123.0 (CTAF) 📻 |
|---------------------------|--|---------------------------|--|



| | |
|----------|----------|
| ELEV 772 | TDZE 769 |
|----------|----------|



| CATEGORY | A | B | C | D |
|--------------|--------|-------------|-------------------------------|-------------------------------|
| LPV DA | | 1074-1 | 305 (400-1) | |
| LNAV/VNAV DA | | 1295-2 | 526 (600-2) | |
| LNAV MDA | 1220-1 | 451 (500-1) | 1220-1 1/4 451 (500-1 1/4) | 1220-1 1/2 451 (500-1 1/2) |
| CIRCLING | 1260-1 | 488 (500-1) | 1460-2 688 (700-2) | 1460-2 1/4 688 (700-2 1/4) |

REIL Rwy 1 and 19 **📻**
MIRL Rwy 1-19 and 10-28 **📻**

EC-1, 16 APR 2026 to 14 MAY 2026

EC-1, 16 APR 2026 to 14 MAY 2026