

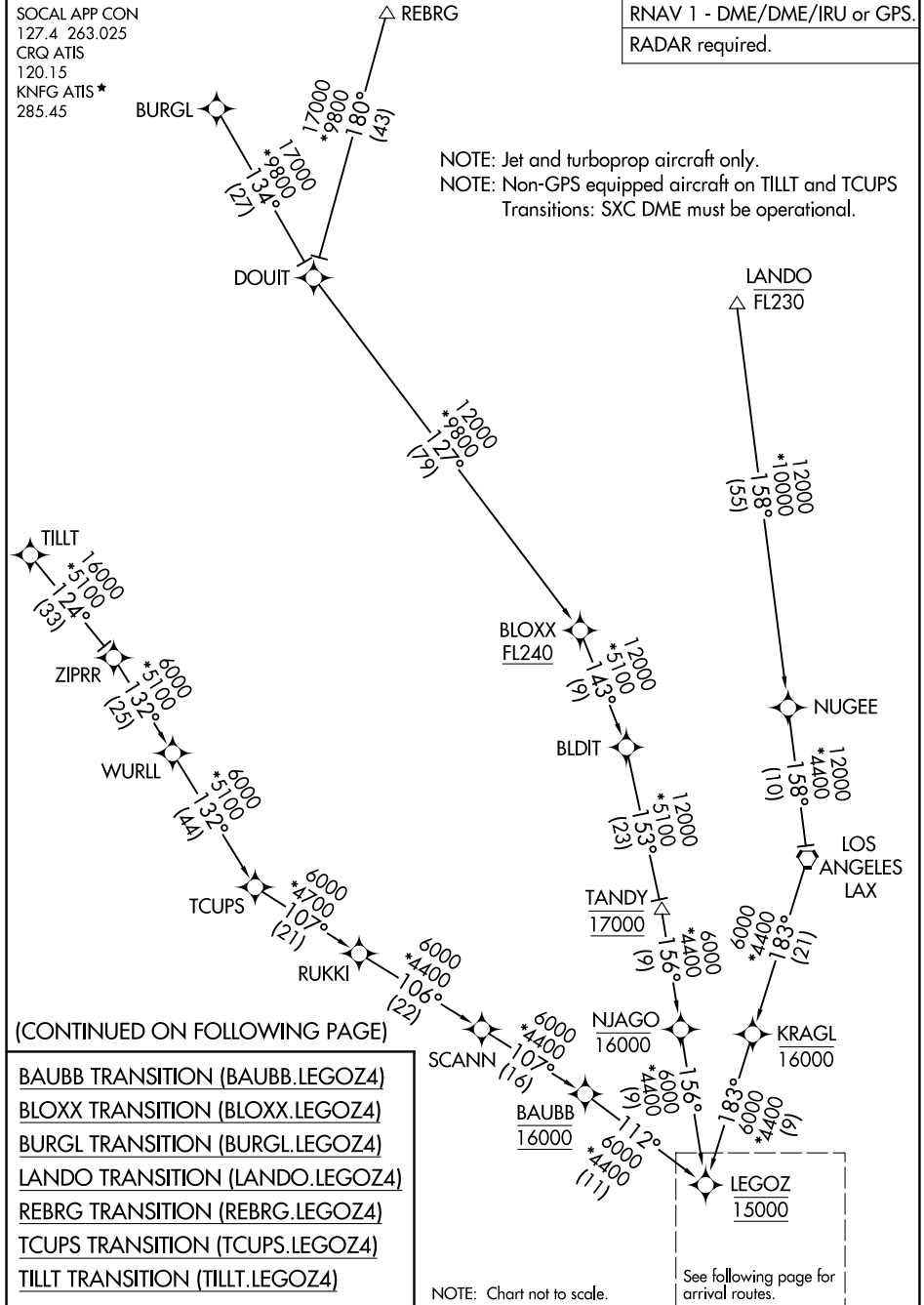
LEGOZ FOUR ARRIVAL (RNAV) Transition Routes

CARLSBAD, CALIFORNIA

SOCAL APP CON
127.4 263.025
CRQ ATIS
120.15
KNFG ATIS*
285.45

RNAV 1 - DME/DME/IRU or GPS.
RADAR required.

NOTE: Jet and turboprop aircraft only.
NOTE: Non-GPS equipped aircraft on TILLT and TCUPS
Transitions: SXC DME must be operational.



SW-3, 16 APR 2026 to 14 MAY 2026

SW-3, 16 APR 2026 to 14 MAY 2026

NOTE: Chart not to scale.