

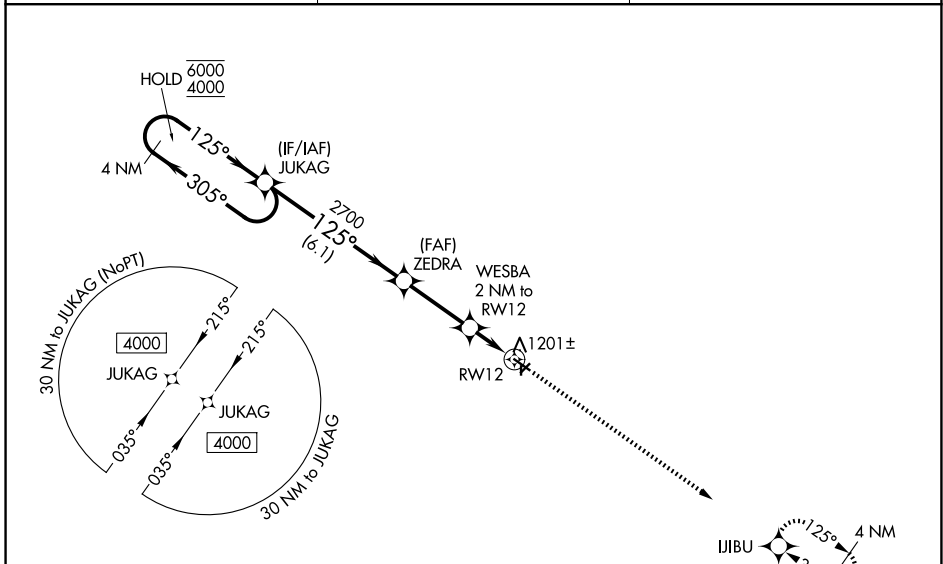
WAAS CH 58038 W12A	APP CRS 125°	Rwy Ldg TDZE Apt Elev	4000 1121 1125
--	------------------------	-----------------------------	---

RNAV (GPS) RWY 12

NORTHEAST IOWA RGNL (CCY)

RNP APCH - GPS.	<p>MISSED APPROACH: Climb to 4000 direct IJIBU and hold, continue climb-in-hold to 4000.</p>
<p>⚠ For uncompensated Baro-VNAV systems, LNAV/VNAV NA below -23°C or above 54°C. Baro-VNAV and VDP NA when using ALO altimeter setting. Circling NA to Rwys 4 and 22. When local altimeter setting not received, use ALO altimeter setting and increase LPV DA to 1481 feet; increase LNAV/VNAV DA to 1481 feet; increase all MDAs 120 feet and LNAV visibility Cat C ¾ SM, and Circling visibility Cat C ½ SM.</p>	

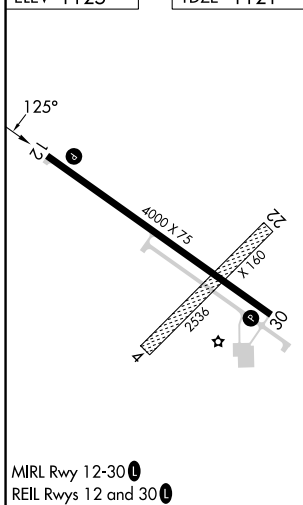
AWOS-3 125.525	DES MOINES APP CON★ 118.9 251.15	UNICOM 122.8 (CTAF) 0
--------------------------	--	---------------------------------



NC-3, 16 APR 2026 to 14 MAY 2026

NC-3, 16 APR 2026 to 14 MAY 2026

ELEV 1125	TDZE 1121
-----------	-----------



	4 NM Holding Pattern	JUKAG	ZEDRA	WESBA 2 NM to RWY 12	4000	IJIBU
	6000 4000	← 305° → 125°	2700	2700	↑	⬠
	GP 3.00° TCH 40		1780	1 NM to RWY 12		
		6.1 NM	2.9 NM	1 NM	1 NM	
CATEGORY	A	B	C	D		
LPV DA		1371-1	250 (300-1)			NA
LNAV/VNAV DA		1371-1	250 (300-1)			NA
LNAV MDA		1460-1	339 (400-1)			NA
CIRCLING	1520-1 395 (400-1)	1580-1 455 (500-1)	1760-1¾ 635 (700-1¾)			NA