

| | | |
|--|------------------------|---|
| WAAS CH 82438 W30A | APP CRS 305° | Rwy Ldg TDZE 1121 Apt Elev 1125 |
|--|------------------------|---|

RNAV (GPS) RWY 30

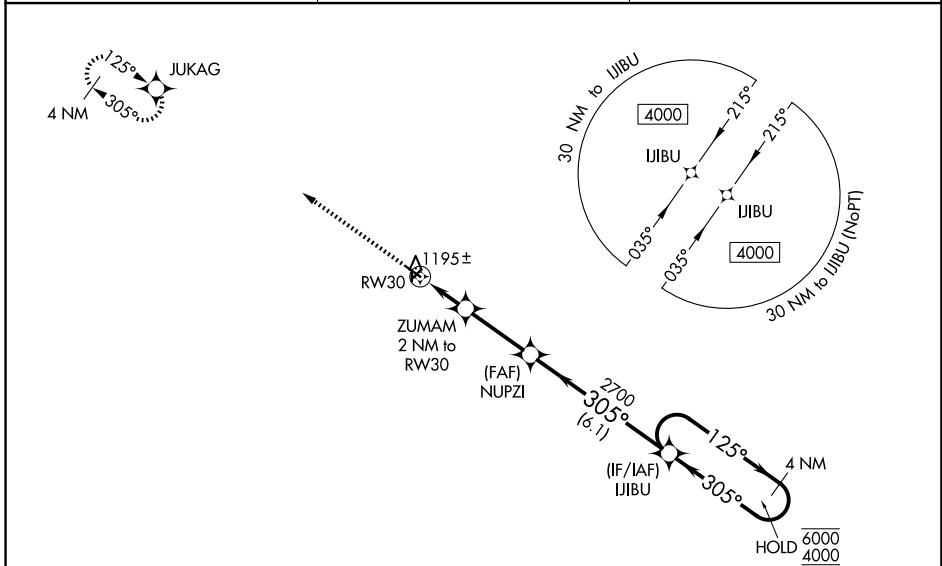
NORTHEAST IOWA RGNL (CCY)

RNP APCH - GPS.

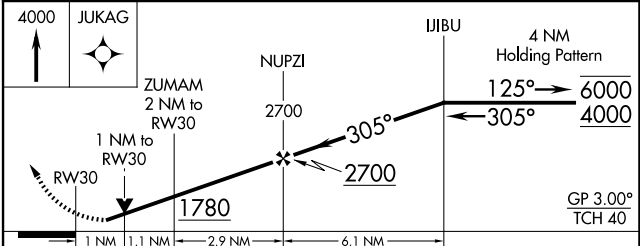
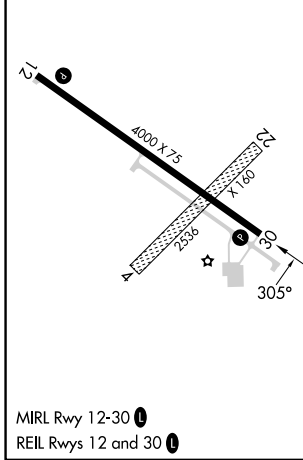
⚠ For uncompensated Baro-VNAV systems, LNAV/VNAV NA below -23°C or above 54°C. Rwy 30 helicopter visibility reduction below 3/4 SM NA. Baro-VNAV and VDP NA when using ALO altimeter setting. Circling NA to Rwys 4 and 22. When local altimeter setting not received, use ALO altimeter setting and increase LPV DA to 1481 feet; increase LNAV/VNAV DA to 1481 feet; increase all MDAs 120 feet and LNAV visibility Cat C 3/8 SM, and Circling visibility Cat C 1/2 SM.

MISSED APPROACH: Climb to 4000 direct JUKAG and hold, continue climb-in-hold to 4000.

| | | |
|--------------------------|---|---------------------------------|
| AWOS-3 125.525 | DES MOINES APP CON ★ 118.9 251.15 | UNICOM 122.8 (CTAF) ① |
|--------------------------|---|---------------------------------|



| | |
|-----------|-----------|
| ELEV 1125 | TDZE 1121 |
|-----------|-----------|



| CATEGORY | A | B | C | D |
|--------------|-----------------------|-----------------------|-------------------------------|----|
| LPV DA | | 1371-1 250 (300-1) | | NA |
| LNAV/VNAV DA | | 1371-1 250 (300-1) | | NA |
| LNAV MDA | | 1460-1 339 (400-1) | | NA |
| CIRCLING | 1520-1 395 (400-1) | 1580-1 455 (500-1) | 1760-1 3/4 635 (700-1 3/4) | NA |

NC-3, 16 APR 2026 to 14 MAY 2026

NC-3, 16 APR 2026 to 14 MAY 2026