

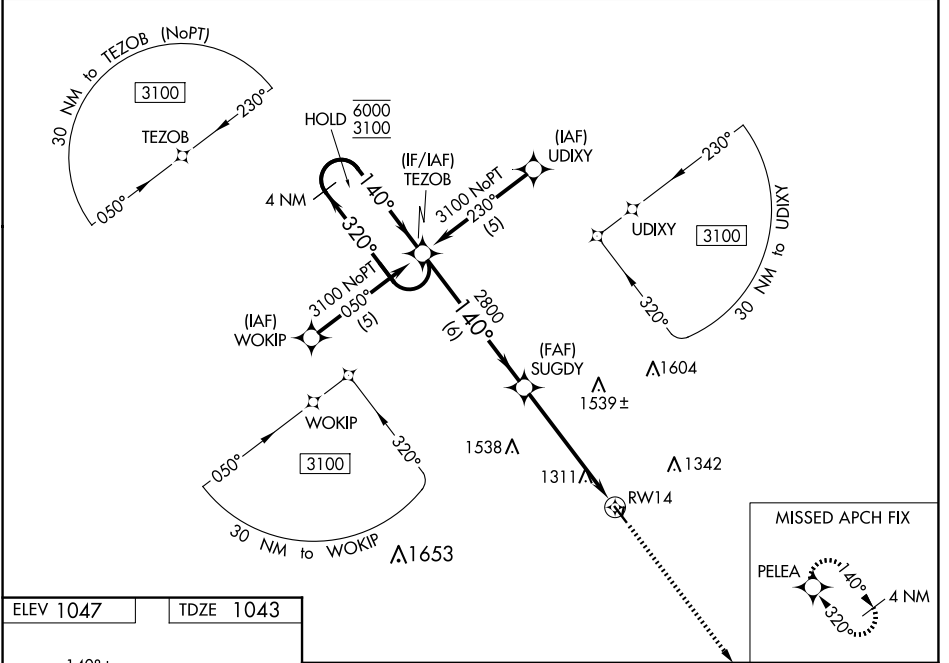
WAAS CH 40219 W14A	APP CRS 140°	Rwy Idg TDZE Apt Elev	4000 1043 1047
--	------------------------	-----------------------------	---

RNAV (GPS) RWY 14

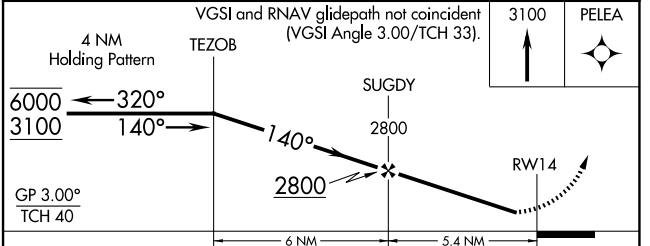
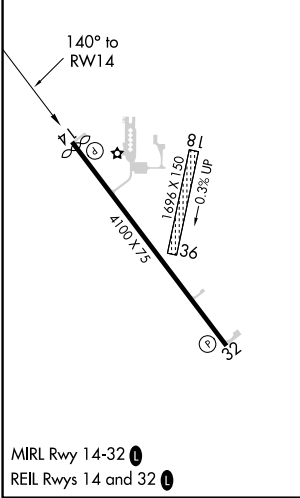
JEFFERSON MUNI (E F W)

RNP APCH-GPS.	<p>⚠ Circling NA to Rwy 18 and 36. Rwy 14 helicopter visibility reduction below $\frac{3}{4}$ SM NA. Baro-VNAV NA. Use Perry altimeter setting, when not received, use Carrol altimeter setting and increase LPV DA to 1362 feet, increase LNAV/VNAV DA to 1691 feet and visibility $\frac{1}{8}$ SM. Increase all MDA 40 feet.</p>	<p>MISSED APPROACH: Climb to 3100 direct PELEA and hold.</p>
---------------	--	--

PRO AWOS-3 118.0	MINNEAPOLIS CENTER 134.0 288.3	UNICOM 122.8 (CTAF) 0
----------------------------	--	---------------------------------



ELEV 1047	TDZE 1043
-----------	-----------



CATEGORY	A	B	C	D
LPV DA	1330-1	287 (300-1)		NA
LNAV/VNAV DA	1659-1 $\frac{3}{4}$	616 (700-1 $\frac{3}{4}$)		NA
LNAV MDA	1600-1	557 (600-1)		NA
CIRCLING	1600-1 553 (600-1)	1660-1 613 (700-1)		NA

NC-3, 16 APR 2026 to 14 MAY 2026

NC-3, 16 APR 2026 to 14 MAY 2026