

WAAS CH <b>93604</b> <b>W07A</b>	APP CRS <b>065°</b>	Rwy Ldg TDZE Apt Elev	<b>5000</b> <b>990</b> <b>993</b>
--	------------------------	-----------------------------	---

# RNAV (GPS) RWY 7

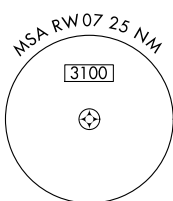
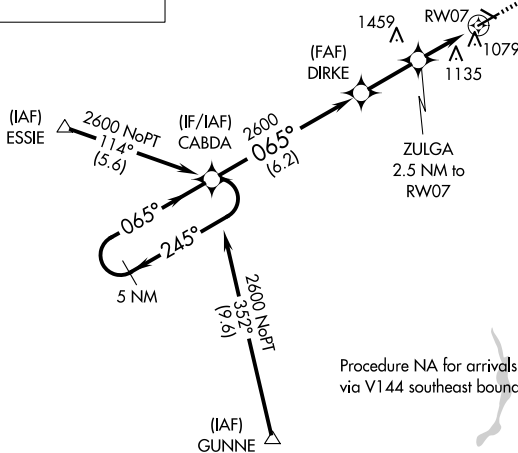
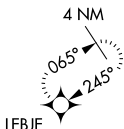
MARION MUNI (MNN)

**⚠** When local altimeter setting not received, use Ohio State University altimeter setting and increase LPV DA to 1327 feet, increase LNAV/VNAV DA to 1574 feet; increase all MDAs 100 feet and visibility Cat C/D ¼ SM. Baro-VNAV NA when using Ohio State University altimeter setting. For uncompensated Baro-VNAV systems, LNAV/VNAV NA below -16°C (4°F) or above 46°C (114°F). Visibility reduction by helicopters NA. DME/DME RNP-0.3 NA.

**MISSED APPROACH:**  
Climb to 3000 direct  
LEBJE and hold.

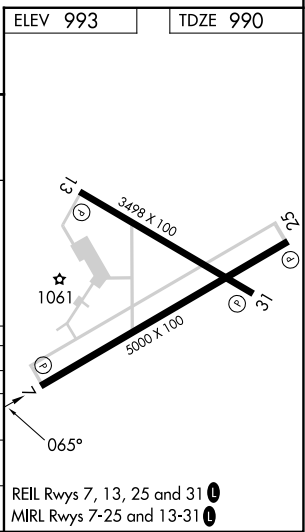
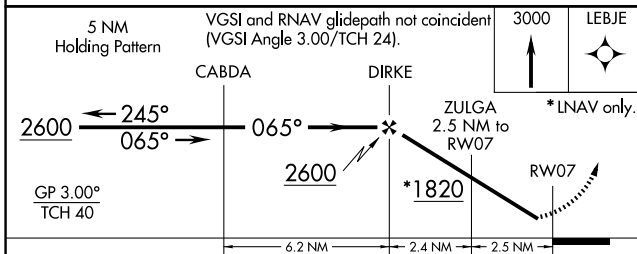
ASOS <b>119.975</b>	CLEVELAND APP CON * <b>128.35 360.65</b>	CLNC DEL <b>126.8</b>	UNICOM <b>122.8 (CTAF) 0</b>
------------------------	---	--------------------------	---------------------------------

MISSED APCH FIX



Procedure NA for arrivals at GUNNE via V144 southeast bound.

ELEV 993	TDZE 990
----------	----------



CATEGORY	A	B	C	D
LPV DA	1240-1 250 (300-1)			
LNAV/VNAV DA	1379-1½ 389 (400-1½)			
LNAV MDA	1440-1 450 (500-1)	1440-1¼ 450 (500-1¼)	1440-1½ 450 (500-1½)	1440-1¾ 450 (500-1¾)
CIRCLING	1480-1 487 (500-1)	1500-1 507 (600-1)	1700-2 707 (800-2)	1820-2¾ 827 (900-2¾)

REIL Rwy 7, 13, 25 and 31 **0**  
MIRL Rwy 7-25 and 13-31 **0**

EC-2, 16 APR 2026 to 14 MAY 2026

EC-2, 16 APR 2026 to 14 MAY 2026