

APP CRS	Rwy Ldg	N/A
180°	TDZE	N/A
	Apt Elev	329

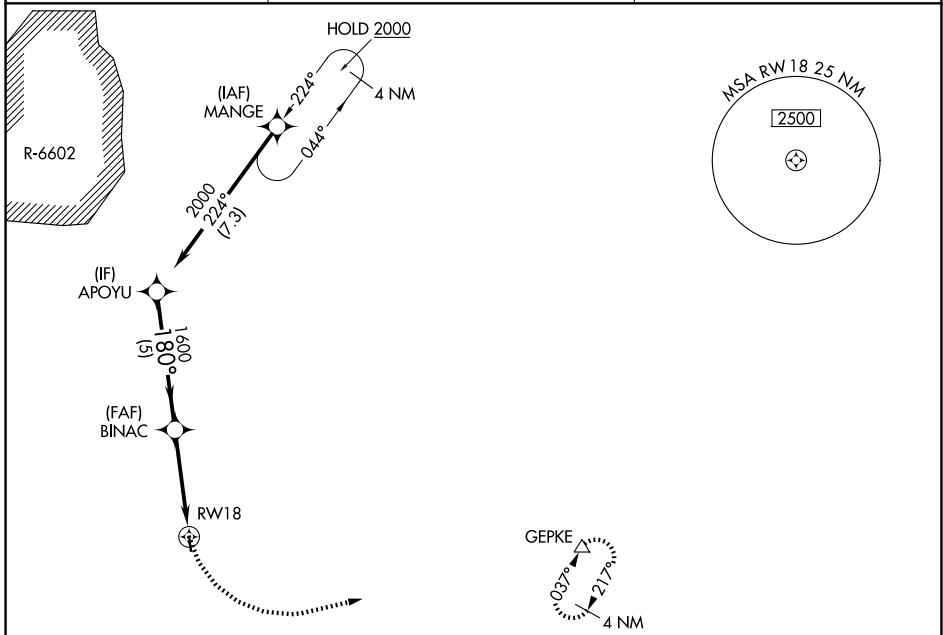
**RNAV (GPS)-A**  
BRUNSWICK COUNTY (LVL)

RNP APCH.

**▼** Procedure NA at night. Helicopter visibility reduction below 1 SM NA. When local altimeter setting not received, use South Hill altimeter setting and increase all MDA 60 feet.  
**▲**

MISSED APPROACH: Climbing left turn to 4000 direct GEPKE and hold, continue climb-in-hold to 4000.

AWOS-3 <b>119.625</b>	WASHINGTON CENTER <b>118.75 377.1</b>	UNICOM <b>122.8 (CTAF)</b>
--------------------------	--	-------------------------------



NE-3, 16 APR 2026 to 14 MAY 2026

NE-3, 16 APR 2026 to 14 MAY 2026

ELEV 329	
----------	--



APOYU	Visual Segment - Obstacles.	4000	GEPKE
2000			▲
	BINAC		
	1600		
		RW18	
	5 NM	3.9 NM	

CATEGORY	A	B	C	NA	D
CIRCLING	1340-3	1011 (1100-3)		NA	