

WAAS CH <b>42915</b>	APP CRS <b>006°</b>	Rwy Ldg TDZE Apt Elev	<b>5201</b> <b>915</b> <b>925</b>
-------------------------	------------------------	-----------------------------	---

# RNAV (GPS) RWY 1

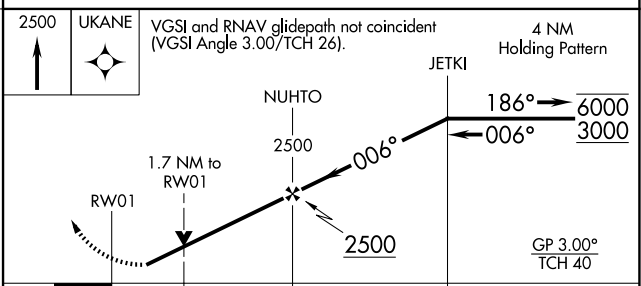
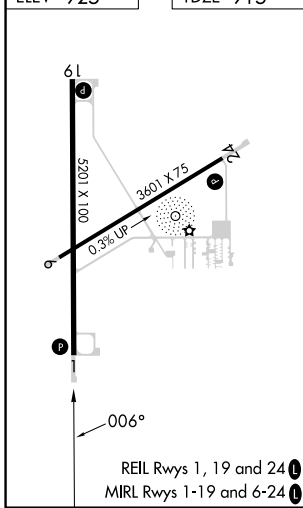
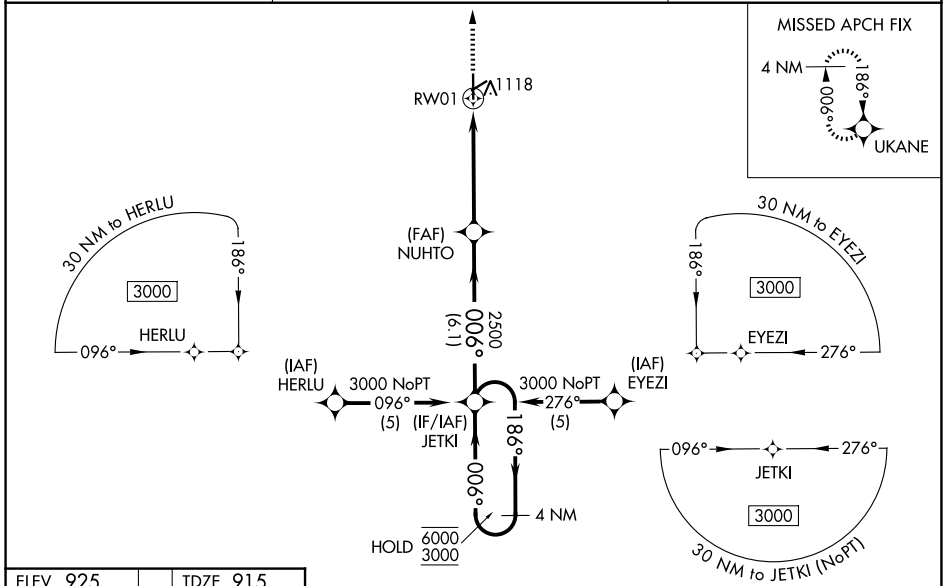
KIRSCH MUNI (IRS)

RNP APCH - GPS.

**⚠** For uncompensated Baro-VNAV systems, LNAV/VNAV NA below -16°C or above 54°C. Rwy 1 helicopter visibility reduction below 3/4 SM NA. Circling Rwy 6 NA at night. VDP NA when using HAI altimeter setting. Baro-VNAV NA when using HAI altimeter setting. When local altimeter setting not received, use HAI altimeter setting and increase LPV DA to 1219 feet; increase LNAV/VNAV DA to 1395 feet and all visibilities 1/8 SM. Increase all MDAs 60 feet and LNAV visibility Cat C/D 1/8 SM, and Circling visibility Cat C/D 1/4 SM.

**MISSED APPROACH:** Climb to 2500 direct UKANE and hold.

AWOS-3P <b>121.325</b>	GREAT LAKES APP CON * <b>121.2 239.25</b>	UNICOM <b>123.05</b> (CTAF) <b>0</b>
---------------------------	--	---



CATEGORY	A	B	C	D
LPV DA	1178-1 263 (300-1)			
LNAV/VNAV DA	1354-1 1/4 439 (500-1 1/4)			
LNAV MDA	1480-1	565 (600-1)	1480-1 1/8	565 (600-1 1/8)
CIRCLING	1480-1	555 (600-1)	1620-2 695 (700-2)	1620-2 1/4 695 (700-2 1/4)

EC-1, 16 APR 2026 to 14 MAY 2026

EC-1, 16 APR 2026 to 14 MAY 2026