

WAAS CH <b>90230</b> <b>W19A</b>	APP CRS <b>186°</b>	Rwy Ldg TDZE Apt Elev	<b>5201</b> <b>915</b> <b>925</b>
--	------------------------	-----------------------------	---

# RNAV (GPS) RWY 19

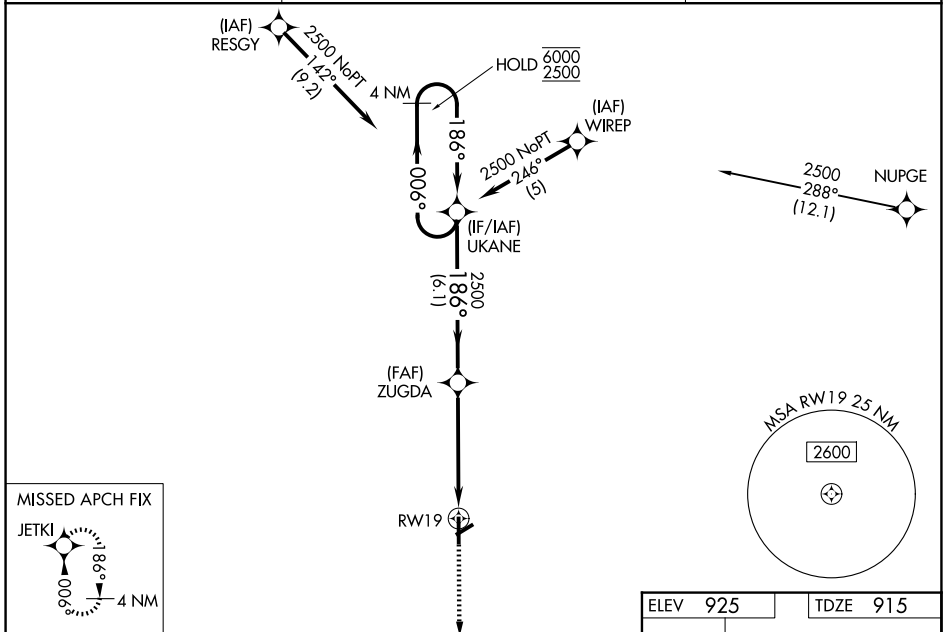
KIRSCH MUNI (IRS)

RNP APCH - GPS.

▼ Rwy 19 helicopter visibility reduction below 3/4 SM NA. For uncompensated Baro-VNAV systems, LNAV/VNAV NA below -16°C or above 54°C. Baro-VNAV and VDP NA when using HAI altimeter setting. Circling Rwy 6 NA at night. When local altimeter setting not received, use HAI altimeter setting and increase LPV DA to 1276 feet; increase LNAV/VNAV DA to 1441 feet and all visibilities 1/8 SM. Increase all MDAs 60 feet and LNAV visibility Cat C/D 1/4 SM, and Circling visibility Cat C/D 1/4 SM.

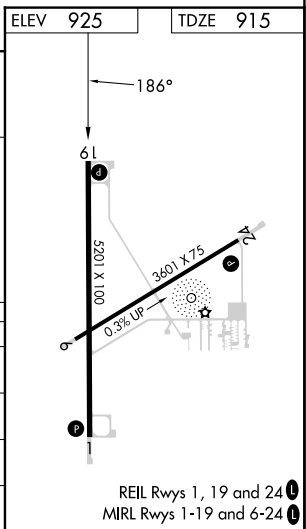
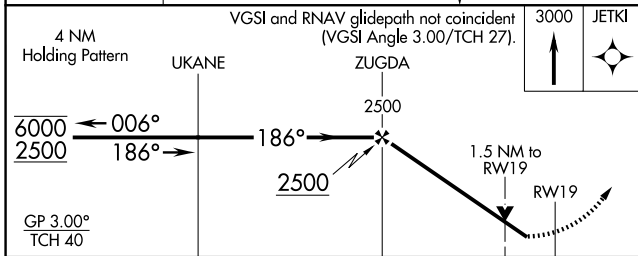
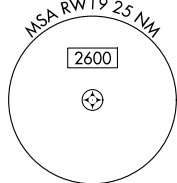
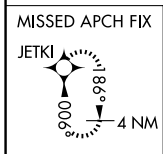
MISSED APPROACH:  
Climb to 3000 direct  
JETKI and hold.

AWOS-3P <b>121.325</b>	GREAT LAKES APP CON ★ <b>121.2 239.25</b>	UNICOM <b>123.05 (CTAF) 0</b>
---------------------------	--	----------------------------------



EC-1, 16 APR 2026 to 14 MAY 2026

EC-1, 16 APR 2026 to 14 MAY 2026



CATEGORY	A	B	C	D
LPV DA		1235-1	320 (400-1)	
LNAV/VNAV DA		1229-1	314 (400-1)	
LNAV MDA	1400-1	485 (500-1)	1400-1 3/8	485 (500-1 3/8)
CIRCLING	1440-1	515 (600-1)	1620-2 695 (700-2)	1620-2 1/4 695 (700-2 1/4)