

LOC I-GCN 108.9	APP CRS 030°	Rwy Ldg 8999
		TDZE 6556
		Apt Elev 6609

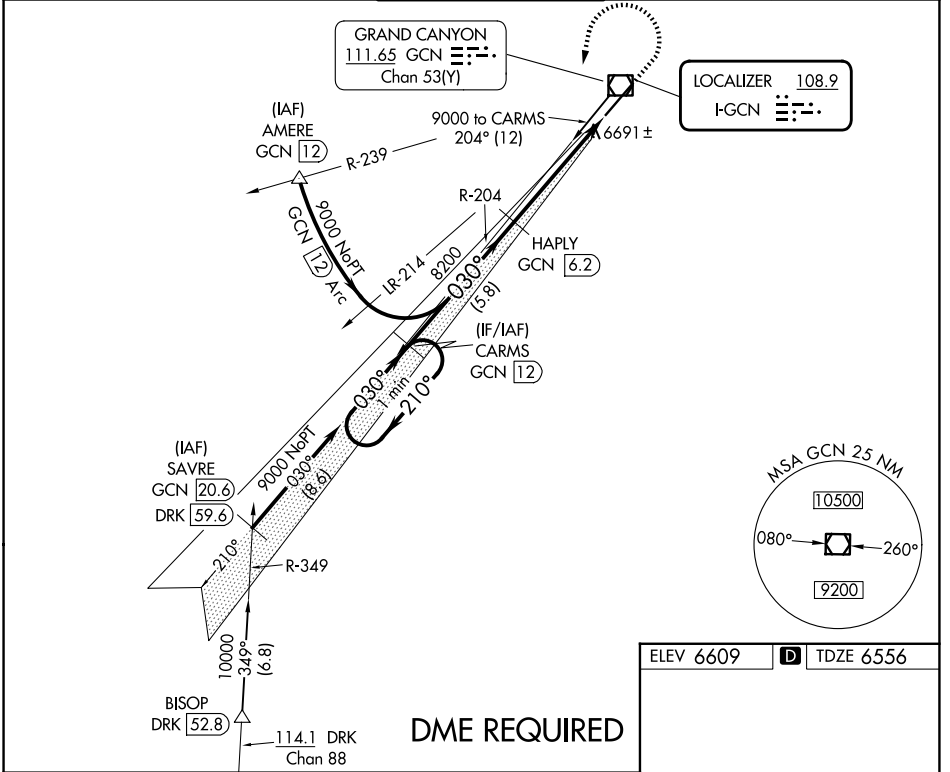
ILS or LOC RWY 3

GRAND CANYON NTL PARK (GCN)

⚠ DME from GCN VOR/DME. Simultaneous reception of I-GCN and GCN DME required. DME required.

MISSED APPROACH: Climb to 7000 then climbing left turn to 9000 on heading 180° and on GCN VOR/DME R-204 direct CARMS/GCN 12 DME and hold.

ATIS 124.3	LOS ANGELES CENTER 124.85 319.2	CANYON TOWER* 119.0 (CTAF) 0	GND CON 121.9	UNICOM 122.95
----------------------	---	--	-------------------------	-------------------------



One Minute Holding Pattern	CARMS GCN (12)	HAPLY GCN (6.2)	7000	9000	GCN R-204	CARMS GCN (12)
	9000	8200	7000	9000	GCN R-204	CARMS GCN (12)
GS 3.00° TCH 58	210°	030°	030°	hdg 180°	* GCN (2.3)	* LOC only.
	5.8 NM	3.9 NM	1.2 NM		GCN (1.2)	
CATEGORY	A	B	C	D		
S-ILS 3		6795-¾	239 (200-¾)			
S-LOC 3	6960-1	404 (400-1)	6960-1⅛	404 (400-1⅛)		
CIRCLING	7140-1 531 (600-1)	7200-1 591 (600-1)	7280-2 671 (700-2)	7620-3 1011 (1100-3)		

ELEV 6609 **D** TDZE 6556

REIL Rwy 21
MIRL Rwy 3-21

SW-4, 16 APR 2026 to 14 MAY 2026

SW-4, 16 APR 2026 to 14 MAY 2026