

LOC I-TXP 109.95	APP CRS 249°	Rwy Ldg 6001
		TDZE 1039
		Apt Elev 1062

ILS or LOC RWY 25

GWINNETT COUNTY/BRISCOE FLD (LZU)

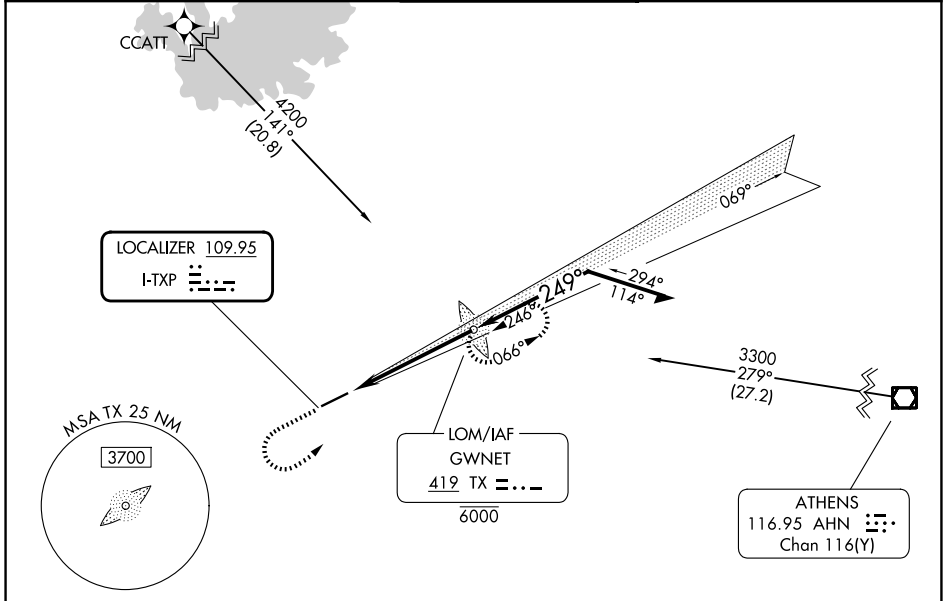
RNAV 1 - GPS. From CCATT.
ADF required.

⚠ Inop table does not apply to S-ILS 25. Autopilot coupled approach NA below 1700. Rwy 25 helicopter visibility reduction below 3/4 SM NA. Circling Rwy 7 NA at night. For inop ALS, increase S-LOC 25 Cat A/B visibility to 1 SM and Cat C/D visibility to 1 1/2 SM.

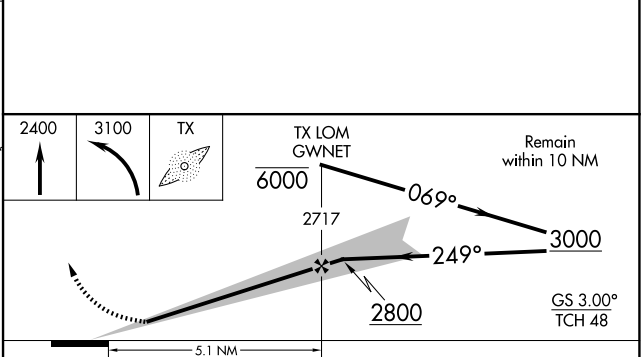
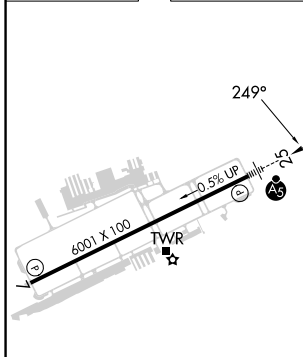
MALSR

MISSED APPROACH: Climb to 2400 then climbing left turn to 3100 direct GWNENT LOM and hold.

ATIS 132.275	ATLANTA APP CON 126.975 239.275	GWINNETT TOWER ★ 124.1 (CTAF) 0	GND CON 121.8	UNICOM 123.05
------------------------	---	---	-------------------------	-------------------------



ELEV 1062	TDZE 1039
-----------	-----------



CATEGORY	A	B	C	D
S-ILS 25		1393-3/4	354 (400-3/4)	
S-LOC 25	1500-3/4	461 (500-3/4)	1500-1	461 (500-1)
CIRCLING	1640-1	578 (600-1)	1780-2 718 (800-2)	1780-2 1/4 718 (800-2 1/4)

SE-4, 16 APR 2026 to 14 MAY 2026

SE-4, 16 APR 2026 to 14 MAY 2026