


WAAS CH <b>82021</b> <b>W25A</b>	APP CRS <b>249°</b>	Rwy Ldg TDZE Apt Elev	<b>6001</b> <b>1039</b> <b>1062</b>
--	------------------------	-----------------------------	---

# RNAV (GPS) RWY 25

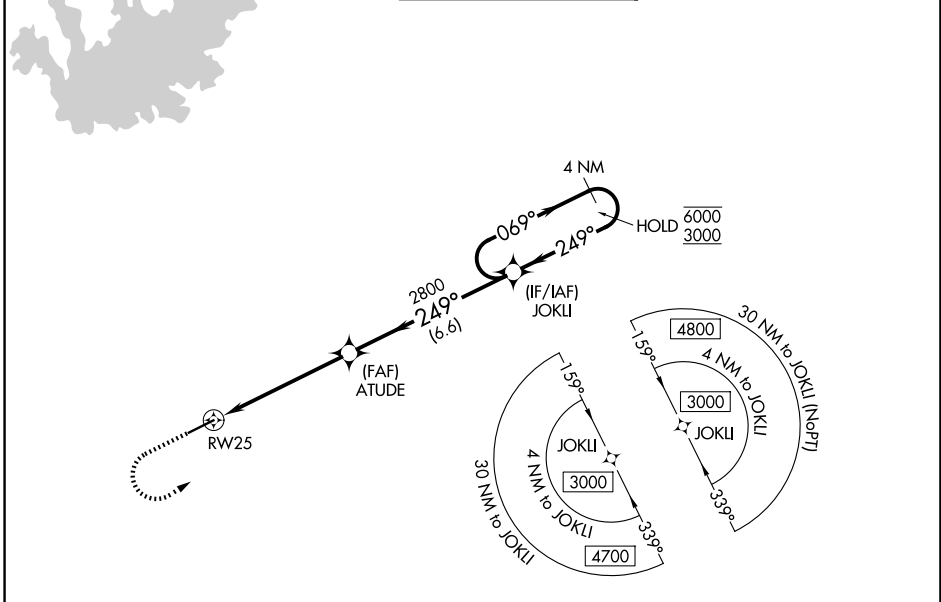
GWINNETT COUNTY/BRISCOE FLD (LZU)

RNP APCH - GPS.

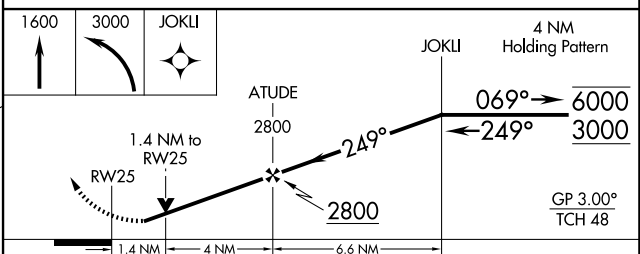
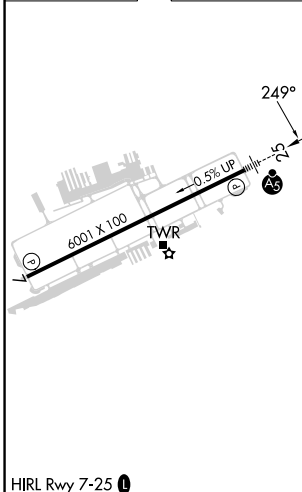
⚠ For uncompensated Baro-VNAV systems, LNAV/VNAV NA below -17°C or above 54°C.  
 ⚠ Circling Rwy 7 NA at night. Rwy 25 helicopter visibility reduction below ¾ SM NA. For inop ALS, increase LNAV/VNAV all Cats visibility to 1¾ SM, LNAV Cat A/B visibility to 1 SM and LNAV Cat C/D visibility to 1¾ SM.

MALSRL  
  
 MISSED APPROACH: Climb to 1600 then climbing left turn to 3000 direct JOKLI and hold.

ATIS <b>132.275</b>	ATLANTA APP CON <b>126.975 239.275</b>	GWINNETT TOWER★ <b>124.1 (CTAF) 0</b>	GND CON <b>121.8</b>	UNICOM <b>123.05</b>
------------------------	---	--	-------------------------	-------------------------



ELEV 1062	TDZE 1039
-----------	-----------



CATEGORY	A	B	C	D
LPV DA		1393-¾	354 (400-¾)	
LNAV/VNAV DA		1516-1	477 (500-1)	
LNAV MDA	1520-¾	481 (500-¾)	1520-1	481 (500-1)
CIRCLING	1640-1	578 (600-1)	1780-2 718 (800-2)	1780-2¼ 718 (800-2¼)