

WAAS CH <b>61126</b> <b>W22A</b>	APP CRS <b>224°</b>	Rwy Idg TDZE Apt Elev	<b>5000</b> <b>1662</b> <b>1664</b>
--	------------------------	-----------------------------	---

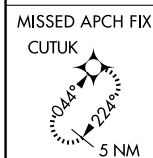
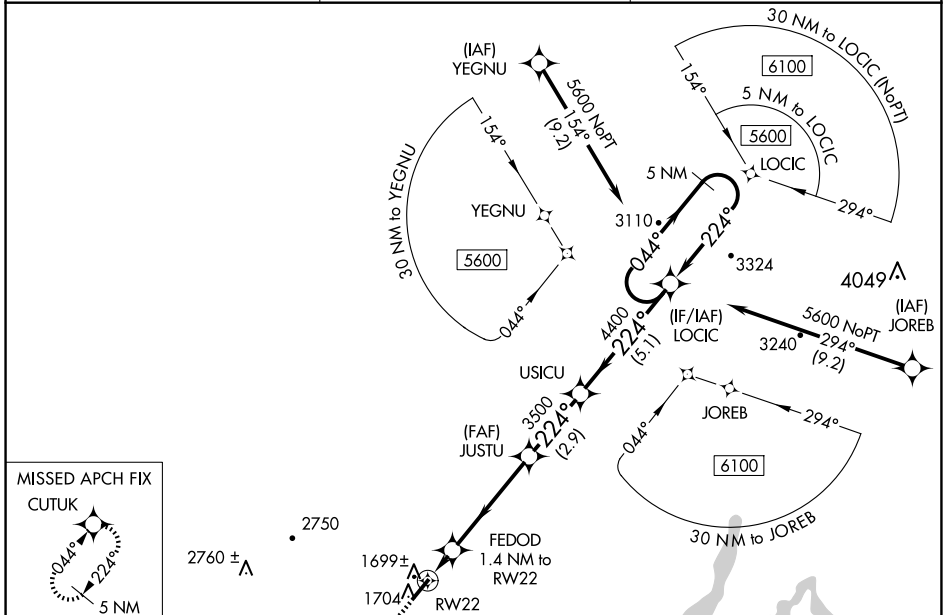
# RNAV (GPS) RWY 22

ROCKWOOD MUNI (RKW)

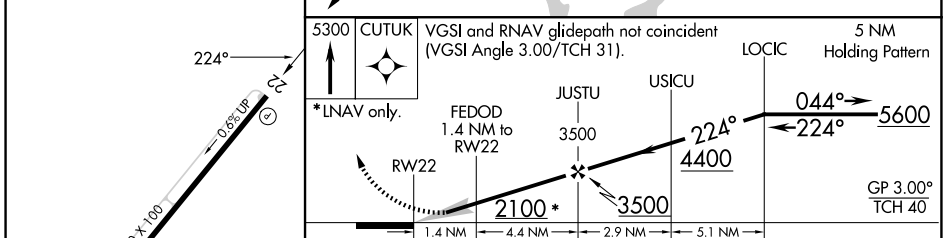
**NA** For uncompensated Baro-VNAV systems, LNAV/VNAV NA below -18°C (0°F) or above 33°C (91°F). DME/DME RNP-0.3 NA. When local altimeter setting not received, use Crossville altimeter setting; increase LPV DA to 1987 feet and visibility all Cats ¼ SM; increase LNAV/VNAV DA to 2011 feet and visibility all Cats ¼ SM; increase all MDA 80 feet and increase LNAV Cat C and D visibility ¼ SM and Circling Cat C visibility ½ SM. Baro-VNAV NA when using Crossville altimeter setting.

**MISSED APPROACH:** Climb to 5300 direct CUTUK and hold, continue climb-in-hold to 5300.

AWOS-3 <b>118.775</b>	ATLANTA CENTER <b>133.6 254.3</b>	UNICOM <b>122.8 (CTAF)</b>
--------------------------	--------------------------------------	-------------------------------



ELEV 1664	TDZE 1662
-----------	-----------



5300 CUTUK	VGSI and RNAV glidepath not coincident (VGSI Angle 3.00/TCH 31).		5 NM
			Holding Pattern
*LNAV only.	FEDOD 1.4 NM to RW22	JUSTU 3500	USICU 4400
	RW22 2100*		LOCIC 5600
	1.4 NM	4.4 NM	2.9 NM
		5.1 NM	
			GP 3.00° TCH 40

CATEGORY	A	B	C	D
LPV DA		1912-7/8	250 (300-7/8)	
LNAV/ VNAV DA		1936-7/8	274 (300-7/8)	
LNAV MDA		1980-1	318 (400-1)	
CIRCLING	2100-1 436 (500-1)	2200-1 536 (600-1)	2260-1½ 596 (600-1½)	2780-3 1116 (1200-3)

SE-1, 16 APR 2026 to 14 MAY 2026

SE-1, 16 APR 2026 to 14 MAY 2026