

RNAV (GPS) RWY 35

OMAK (OMK)

APP CRS 009°	Rwy Ldg 4667
	TDZE 1303
	Apt Elev 1305

RNP APCH - GPS.

⚠ Circling NA east of Rwy 17-35.

❄ -14°C

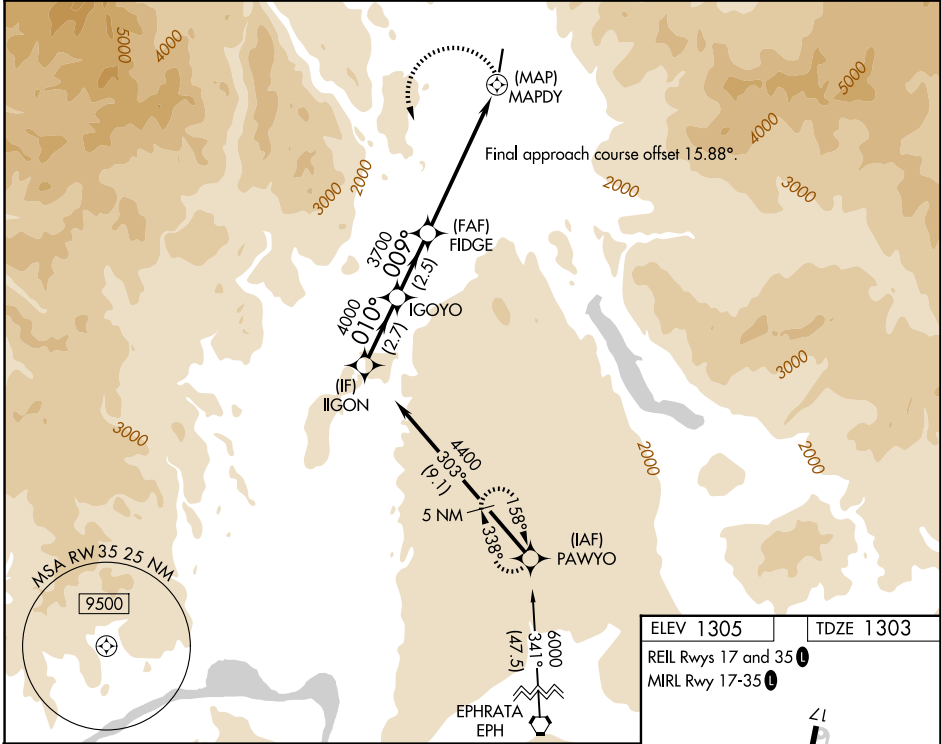
MISSED APPROACH: Climbing left turn to 6000 direct PAWYO and hold.

*Missed approach requires minimum climb of 255 feet per NM to 4200.

ASOS
118.325

SEATTLE CENTER
126.1 291.6

UNICOM
122.8 (CTAF) 0



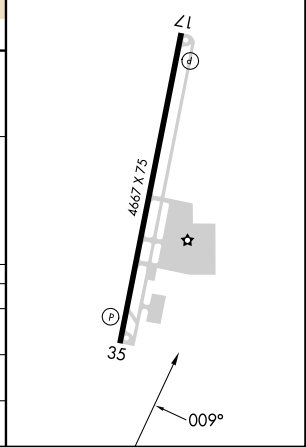
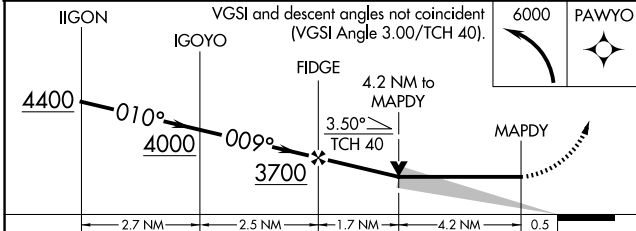
NW-1, 16 APR 2026 to 14 MAY 2026

NW-1, 16 APR 2026 to 14 MAY 2026

ELEV 1305	TDZE 1303
-----------	-----------

REIL Rwy 17 and 35 **0**

MIRL Rwy 17-35 **0**



CATEGORY	A	B	C	D
LNAV MDA*	2840-1¼ 1537 (1600-1¼)	2840-1½ 1537 (1600-1½)	2840-3 1537 (1600-3)	NA
LNAV MDA	3120-1¼ 1817 (1900-1¼)	3120-1½ 1817 (1900-1½)	3120-3 1817 (1900-3)	NA
CIRCLING	3120-1¼ 1815 (1900-1¼)	3120-1½ 1815 (1900-1½)	3120-3 1815 (1900-3)	NA