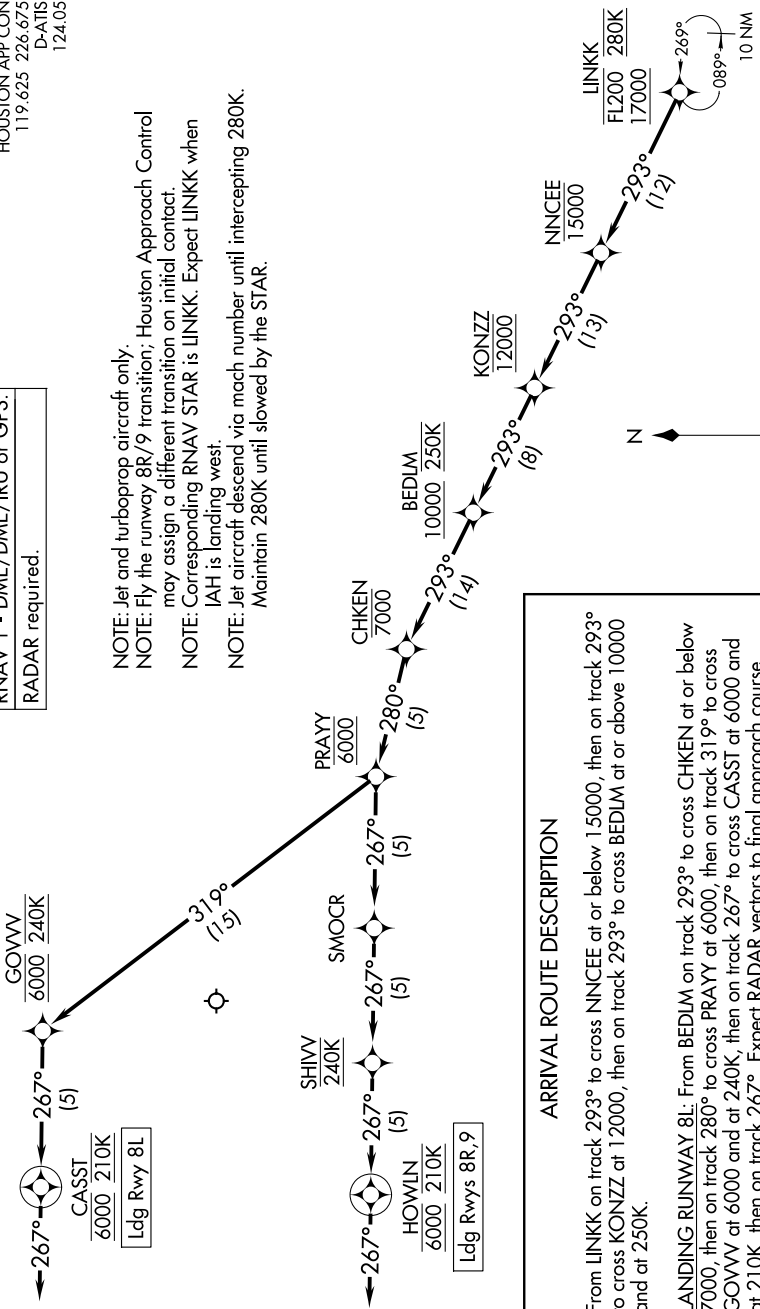


NNCEE TWO ARRIVAL (RNAV) Arrival Routes

HOUSTON APP CON
119.625 226.675
D-ATIS
124.05

RNAV 1 - DME/DME/IRU or GPS.
RADAR required.

NOTE: Jet and turboprop aircraft only.
NOTE: Fly the runway 8R/9 transition; Houston Approach Control may assign a different transition on initial contact.
NOTE: Corresponding RNAV STAR is LINKK. Expect LINKK when IAH is landing west.
NOTE: Jet aircraft descend via mach number until intercepting 280K. Maintain 280K until slowed by the STAR.



ARRIVAL ROUTE DESCRIPTION

From LINKK on track 293° to cross NNCEE at or below 15000, then on track 293° to cross KONZZ at 12000, then on track 293° to cross BEDIM at or above 10000 and at 250K.

LANDING RUNWAY 8L: From BEDIM on track 293° to cross CHKEN at or below 7000, then on track 280° to cross PRAYY at 6000, then on track 319° to cross GOWV at 6000 and at 240K, then on track 267° to cross CASST at 6000 and at 210K, then on track 267°. Expect RADAR vectors to final approach course.

LANDING RUNWAYS 8R, 9: From BEDIM on track 293° to cross CHKEN at or below 7000, then on track 280° to cross PRAYY at 6000, then on track 267° to cross SHIVV at 240K, then on track 267° to cross HOWLIN at 6000 and at 210K, then on track 267°. Expect RADAR vectors to final approach course.

NOTE: Chart not to scale.