

APP CRS	Rwy Ldg	<b>3204</b>
<b>246°</b>	TDZE	<b>2098</b>
	Apt Elev	<b>2099</b>

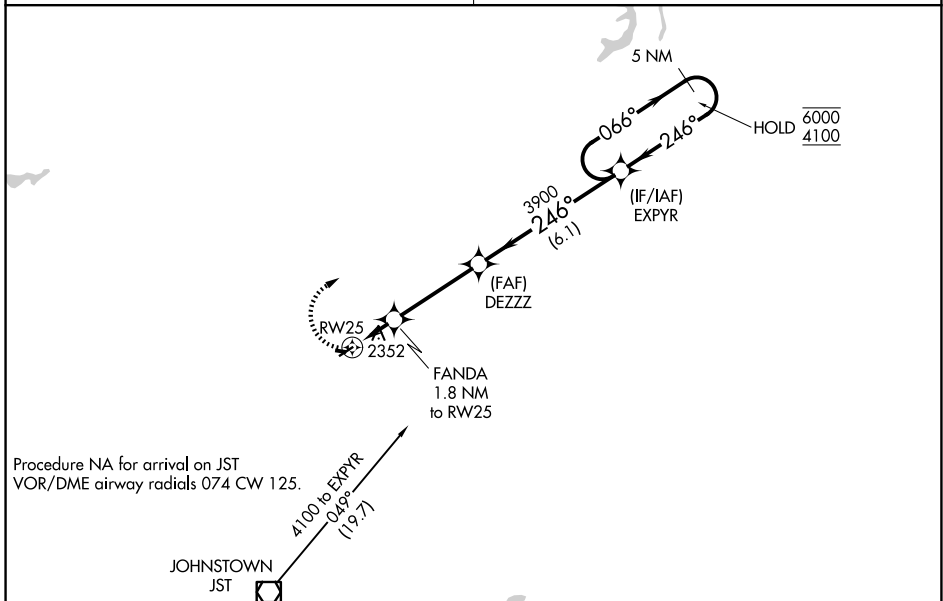
# RNAV (GPS) RWY 25

EBENSBURG (9G8)

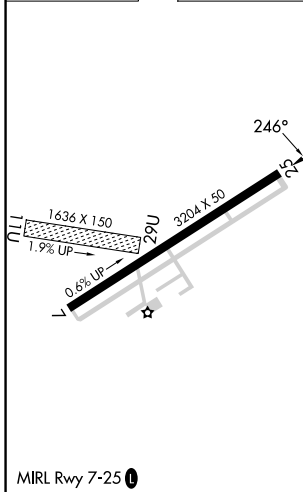
RNP APCH - GPS.		MISSED APPROACH: Climbing right turn to 4100 direct EXPYR and hold.
<p><b>▼</b> Procedure NA at night. Rwy 25 helicopter visibility reduction below 1 SM NA.</p> <p><b>▲ NA</b> Obtain local altimeter setting on CTAF; when not received, use Johnstown altimeter setting and increase all MDA 60 feet and visibility Cat C ¼ SM.</p>		

JOHNSTOWN APP CON ★  
**121.2 299.2**

UNICOM  
**122.8 (CTAF) 0**



ELEV	2099	TDZE	2098
------	------	------	------



4100	EXPYR	Visual Segment - Obstacles.	5 NM
			Holding Pattern
		FANDA 1.8 NM to RW25	DEZZZ
		RW25	EXPYR
		2720	3900
		1.8 NM	3.6 NM
		6.1 NM	
CATEGORY	A	B	C
LNVA MDA	2620-1	522 (600-1)	2620-1½ 522 (600-1½)
			D
			NA

NE-4, 16 APR 2026 to 14 MAY 2026

NE-4, 16 APR 2026 to 14 MAY 2026