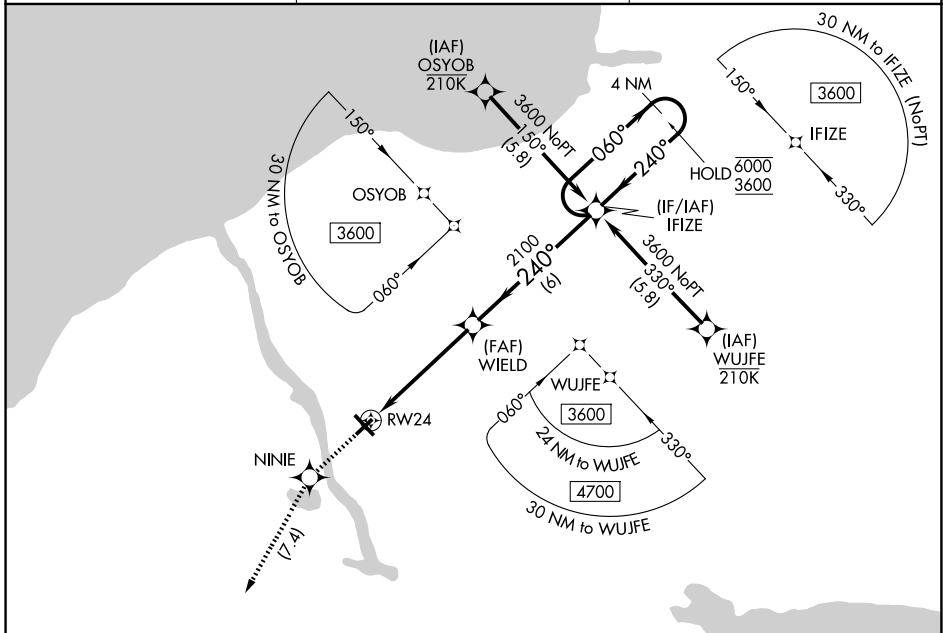


APP CRS 240°	Rwy Ldg TDZE Apt Elev	3997 469 475
------------------------	-----------------------------	---

RNAV (GPS) RWY 24

OSWEGO COUNTY (FZY)

RNP APCH - GPS.		MISSED APPROACH: Climb to 3000 direct NINIE and left turn direct LYSAN and hold, continue climb-in-hold to 3000.
Rwy 24 helicopter visibility reduction below 1 SM NA.		
ASOS 119.275	SYRACUSE APP CON 126.125 269.125	UNICOM 123.0 (CTAF) 0



NE-2, 16 APR 2026 to 14 MAY 2026

NE-2, 16 APR 2026 to 14 MAY 2026

ELEV 475	TDZE 469
----------	----------

IFIZE 4 NM Holding Pattern

6000
3600

060°
240°

3.00° TCH 40

5 NM

6 NM

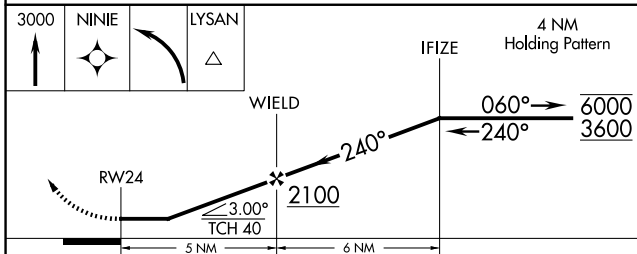
5126 X 100
0.5% UP

3997 X 100
0.3% UP

240°

240°

33



CATEGORY	A	B	C	D
LNVA MDA	960-1	491 (500-1)	960-1 $\frac{3}{8}$	491 (500-1 $\frac{3}{8}$)
CIRCLING	960-1	485 (500-1)	960-1 $\frac{1}{2}$ 485 (500-1 $\frac{1}{2}$)	1040-2 565 (600-2)

MIRL Rwy 6-24 0
HIRL Rwy 15-33 0
REIL Rwy 15 and 33 0
REIL Rwy 6 and 24