

WAAS CH 93513 W01A	APP CRS 010°	Rwy Idg TDZE Apt Elev	6604 87 91
--	------------------------	-----------------------------	---------------------------------------

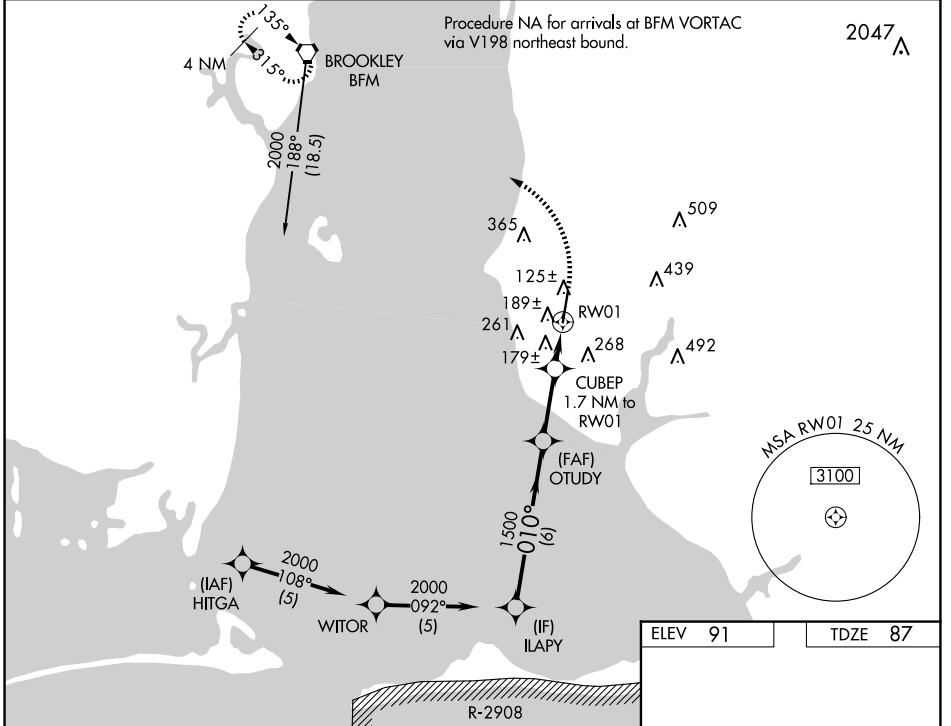
RNAV (GPS) RWY 1

H L SONNY CALLAHAN (CQF)

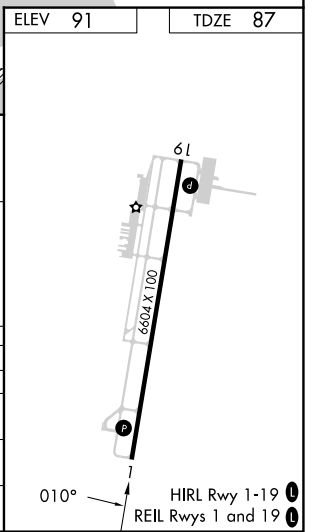
⚠ Baro-VNAV NA when using Mobile Intl altimeter setting. For uncompensated Baro-VNAV systems, LNAV/VNAV NA below -15°C (5°F) or above 43°C (109°F). DME/DME RNP-0.3 NA. VDP NA with Mobile Intl altimeter setting. When local altimeter setting not received, use Mobile Intl altimeter setting and increase LPV DA to 329 feet, LNAV/VNAV DA to 517 feet, and all MDA 60 feet; increase LNAV Cats C/D visibility $\frac{1}{8}$ SM and Circling Cats C/D $\frac{1}{4}$ SM.

MISSED APPROACH:
Climb to 700 then climbing left turn to 2000 direct BFM VORTAC and hold.

AWOS-3PT 118.425	MOBILE APP CON ★ 118.5 269.3	UNICOM 123.0 (CTAF) 0
----------------------------	--	---------------------------------



Procedure Turn NA 2000	ILAPY	OTUDY	CUBEP	RW01	RW01	BFM
GP 3.00° TCH 35	010°	1500	1.7 NM to RW01	*1 NM to RW01	1 NM	*LNAV only.
CATEGORY	A	B	C	D		
LPV DA		287- $\frac{3}{4}$	200 (200- $\frac{3}{4}$)			
LNAV/VNAV DA		475-1 $\frac{3}{8}$	388 (400-1 $\frac{3}{8}$)			
LNAV MDA		440-1	353 (400-1)			
CIRCLING	560-1 469 (500-1)	580-1 489 (500-1)	720-1 $\frac{3}{4}$ 629 (700-1 $\frac{3}{4}$)	740-2 649 (700-2)		



SE-4, 16 APR 2026 to 14 MAY 2026

SE-4, 16 APR 2026 to 14 MAY 2026